



**Department of Corrections
Division of Adult Institutions
Wisconsin Women's Correctional System**

**NOON
ZZZ
TACZZA
TACZZA
R R R R R
H R O P H R H**

Taycheedah Correctional Institution

John C. Burke Correctional Center

Milwaukee Women's Correctional Center

Robert E. Ellsworth Correctional Center

July 1, 2008 – June 30, 2009



**Cathy A. Jess, Warden
751 County Road K
PO Box 1947
Fond du Lac, WI 54936-1947**

Table of Contents

WWCS Mission Statement & Guiding Principles	1
Message from WWCS Warden and Administrative Team.....	2
Taycheedah Correctional Institution	
• Organizational Chart	3
• Interesting Facts	4
• A Little History	5
• MOA US DOJ & WI-Department of Corrections	6
• Accomplishments.....	6
• Community Advisory Board	11
• Institution Programs	
○ <i>Social Services</i>	11
○ <i>Religious Services/Programs</i>	13
○ <i>Psychological Services</i>	14
○ <i>MSMU/Dual Diagnosis/Strength Programming</i>	16
○ <i>AODA</i>	17
○ <i>Education</i>	18
○ <i>Vocational</i>	19
○ <i>Incarcerated Youth Offender Program</i>	19
○ <i>Harris Hall Community Services</i>	20
○ <i>Simpson Based Community Services</i>	20
○ <i>Recreation</i>	21
• Health Services Unit	21
• Americans With Disabilities Act (ADA) Coordinator.....	23
• Classification Review Committee	23
• Assessment & Evaluation	23
• Security & Safety.....	23
• Housing Units.....	24

- Records 25
- Inmate Complaint Review System 26

John C. Burke Correctional Center

- Organizational Chart 27
- Accomplishments 28
- Program Participation and Completions 29
- Community Relations Board 29
- Restorative Justice 29
- Programs 30
- Volunteers 31

Milwaukee Women’s Correctional Center

- Organizational Chart 32
- Accomplishments 33
- Program Participation and Completions 34
- Community Advisory Board 34
- Restorative Justice 34
- Programs 35
- Volunteers 35

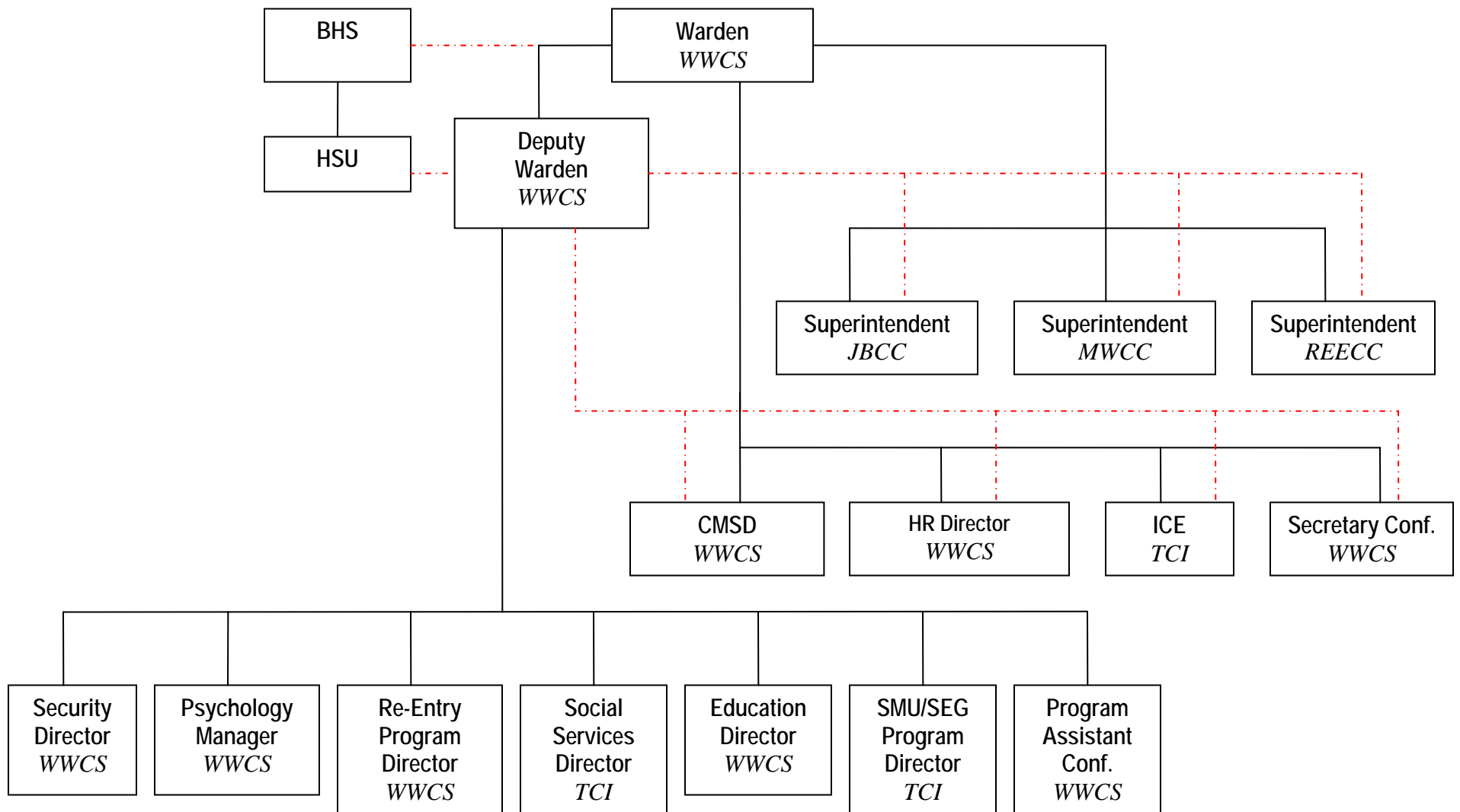
Robert E. Ellsworth Correctional Center

- Organizational Chart 36
- Accomplishments 37
- Program Participation and Completions 41
- Community Advisory Board 41
- Treatment Programs 41
- Educational Programs 42
- Community Service/Restorative Justice 44
- Volunteers 45
- Work Release Program 45

Wisconsin Women's Correctional System

Organizational Chart

July 2008 – June 2009





Wisconsin Women's Correctional System

Mission Statement

The Wisconsin Women's Correctional System will provide female inmates safe and secure confinement in an environment which is gender responsive and utilizes gender specific strategies to assist in successful inmate transition and return to their families and communities

Guiding Principles

Acknowledge that gender makes a difference

Create an environment based on safety, respect and dignity

Develop procedures, practices and programs that are relational to children, family and significant others, and the community

Address substance abuse, trauma and mental health issues through comprehensive, integrated and culturally relevant services and appropriate supervision

Provide women with an opportunity to improve their socio-economic conditions.

Establish a system of comprehensive, collaborative services to assist in successful re-entry and community supervision

**MESSAGE FROM THE WWCS WARDEN
AND ADMINISTRATIVE TEAM**

Welcome to the Fiscal Year 2009 Annual Report for July 1, 2008 to June 30, 2009. This report acknowledges the hard work and dedication of all staff in the Wisconsin Women's Correctional System (WWCS) to provide a safe and secure environment for staff, offenders and visitors. Throughout the year, staff from all facilities and at all levels of the organization worked collaboratively, adjusting and modifying operations as needed, ensuring that we are maintaining positive institution living and work environments.

Fiscal year 2009 brought a number of challenges and changes to the Women's System that is outlined in this report. As you read this report, you will find there are many diverse operations that take place in the WWCS and the accomplishments are not all inclusive.

Managing the activities and behaviors of women who live in a place they do not want to be can be challenging. As you read through this report you will find that the structure and programs of the WWCS facilities provide them with an opportunity to improve their chances of living a crime-free productive life upon their return to the community. We focus on community safety promoting offender preparation for their re-entry into the community.

I am proud of all the community service activities that are occurring at all the WWCS facilities. The inmates are learning how to be a good community member and the importance of making our communities safe.

There are numerous day to day challenges, opportunities and achievements that occur as a result of staff's commitment to their profession in WWCS. Professional communication, teamwork and a positive attitude are the main contributors to the many accomplishments and successes in WWCS.

On behalf of the Wisconsin Women's Correctional System staff, we proudly present our Annual Report.

**Cathy A. Jess
WWCS Warden**

**Deanne Schaub
WWCS Deputy Warden**

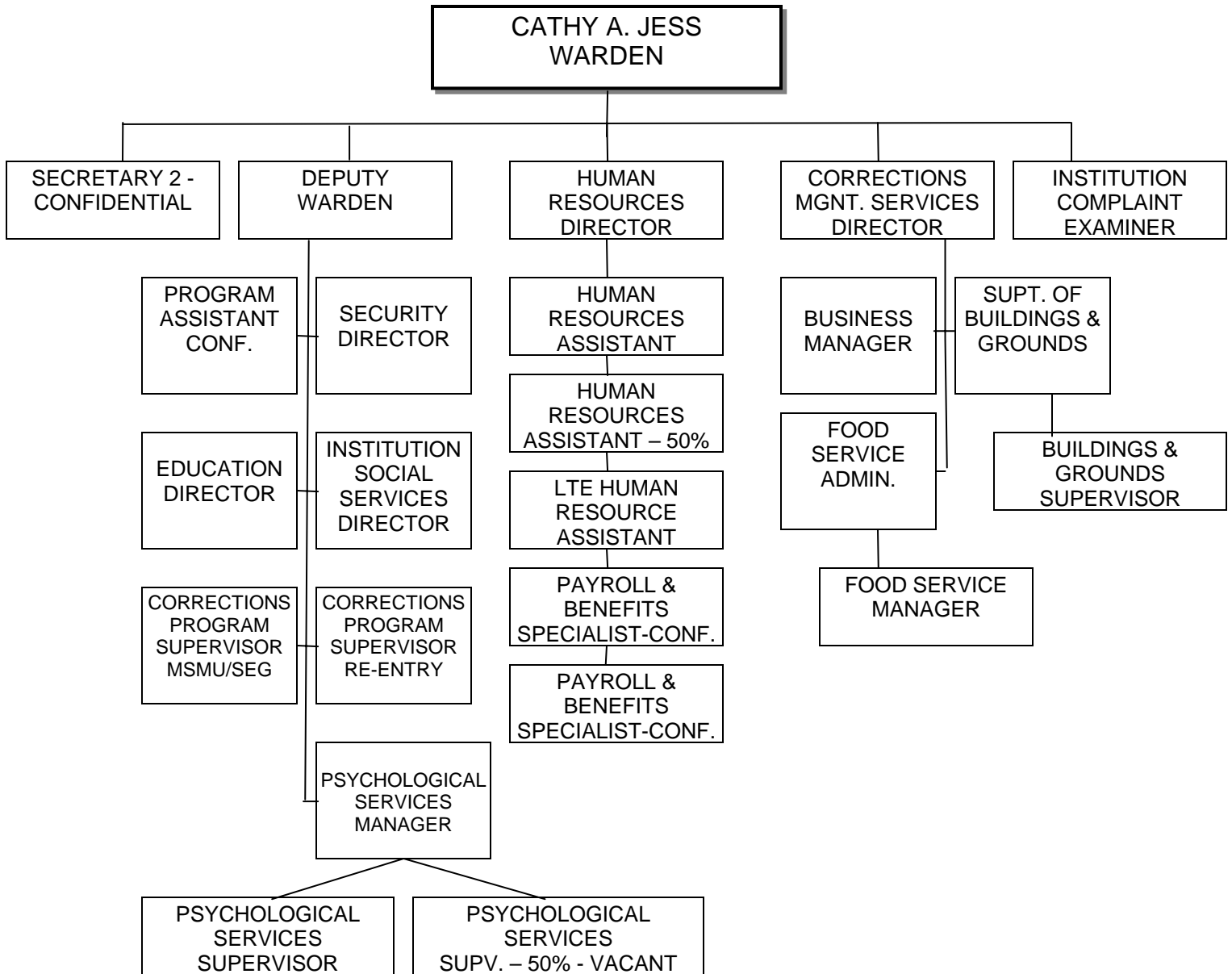
**Deborah Chambers
MWCC Superintendent**

**Chris Krueger
JBCC Superintendent**

**Suzanne Schmitt
REECC Superintendent**

Taycheedah Correctional Institution Organizational Chart FY 09

Fond du Lac, WI



TAYCHEEDAH CORRECTIONAL INSTITUTION

751 County Road K, P.O. Box 1947
 Fond du Lac, WI 54936-1947
 920-929-3800



INTERESTING FACTS

TCI opened:	1921	Current Population:	724 (as of 06/30/09)
Number of Acres:	50	Uniformed Staff:	178
Security Level:	Max./Medium	Non-Uniformed Staff:	98
Operating Capacity:	684 Females	BHS/HSU/Agency Staff:	103

Annual Operating Budget:

General Operating budget (Including Salaries)	\$36,354,362
Fuel & Utilities	\$2,057,787
Maintenance & Repair	\$311,056
Goods & Services for Inmates (Variable Non-Food)	\$1,013,058
Institution Food	\$1,458,683
Purchase of Services (Programming)	\$354,515
Center Systems - General	\$409,682

Inmate Wages:

Institution	\$391,702
Project Crew	\$21,075
Work Release	\$1,870,946
BSI	\$81,382

Obligations/Collections:

Child Support	\$79,414
Court Ordered	\$112,940
VWS / DNA	\$63,871
Institution Restitution	\$6,752
Room	\$301,870
Board	\$57,499
Transportation	\$186,641

Inmate Revenue Accounts:

Collected the following revenues from inmates for their use / participation in various activities

Transportation	\$187,575
Telephone Commission (184)	\$55,877
Other 166 Accounts	\$49,626

Expended from these revenue funds for various purchases directly benefiting the inmates and their visitors

	\$231,029
--	-----------

(Budgetary statistics reflect TCI and 3 Centers)

A LITTLE HISTORY

Taycheedah's history began in the early 1800's, when Governor James Doty established a home in Fond du Lac, which to this day stands on the institution grounds. In the early 1850's, female offenders were housed in the Wisconsin State Prison, known today as Waupun Correctional Institution. Work began in 1912 on the creation of a female facility and in 1921 the Wisconsin Industrial Home for Women was opened. Those first women were mostly committed for so called "crimes against morality" while repeat and more violent or serious offenders were housed at the prison in Waupun. In 1931, work began on the Wisconsin Prison for Women, to be located adjacent to the Industrial Home. The facility was completed and opened in 1933, and the women who had been at Waupun were transferred here. There were two separate facilities operating on the same grounds. In 1945, the two facilities were consolidated and given the name Wisconsin Home for Women. In 1975, the Legislature changed the name to Taycheedah Correctional Institution.

In 1983, the Gower building was completed which houses the institution communications center, space for health, clinical, and social services, a small segregation area, and indoor/outdoor visitation areas.

In October 1992, Governor Thompson's Prison Construction Plan authorized construction of a new 12' fence with razor wire and electronic detection, as well as a perimeter road with exterior lighting.

In 1995, the first housing unit erected since 1933 was opened. The new unit almost doubled the institution's operating capacity. In August of 1997, a barracks unit was opened. The unit can house up to 150 inmates. In 2002, 2 new buildings were opened. One building houses inmates with Mental Health needs consisting of 64 beds and also the new Segregation unit with 68 beds. The other building is a general population building (McCauley Unit) consisting of 240 beds. HSU unit was remodeled and expanded to open in 2004. In December of 2004, WWCS/TCI took over all of the female intake Assessment and Evaluation (A&E) responsibilities from Dodge Correctional Institution (DCI), which consisted of 119 beds.

All female facilities officially became the Wisconsin Women's Correctional System (WWCS) on August 21, 2005, transitioning all female institutions and centers under the direction of one Warden. ACLU filed certified class action lawsuit in May 2006 to afford better medical, dental and mental health treatment, and ADA accommodations identified as grossly deficient at TCI in comparison to the male inmates.

The 3rd floor of Addams Hall was renovated and opened in May 2007 to provide additional bed space due to an increase in population. Population soared over 800 inmates in December 2007. Remodeling construction began in February 2008 in existing Gower building to provide new A&E intake area for new admissions and a central location for all inmates processing for movement on/off grounds completed in July 2008. Addams Hall 3rd floor closed in June, with population averaging 750. Construction to expand the Gatehouse was completed in September 2008.

Installation of stun fence to perimeter security fence project was completed in April 2009. Federal Injunction decision was ordered on April 24, 2009, resulting from ACLU class action lawsuit. The order indicated that all controlled medications at TCI be administered by trained medical personnel with 60 days to comply, and mandated implementation of computerized prescriber order entry system. As of June 22, 2009, all medication administered at TCI by LPN or greater licensure. As of June 22, 2009, all medications are administered at TCI by LPN or greater licensure.

MEMORANDUM OF AGREEMENT (MOA)
US DEPARTMENT OF JUSTICE (USDOJ) & WI-DEPARTMENT OF CORRECTIONS (DOC)

The USDOJ and Wisconsin DOC entered into a MOA in September 2008 related to mental health care for female inmates housed at TCI. In reviewing mental health services at TCI, the US-DOJ identified 13 areas of need, and TCI agreed to work toward meeting those 13 standards of care over the next 4 years.

Included in those standards are:

- Additional psychiatric staffing
- Improvements to the way medications are delivered
- Additional training of all staff on mental health topics
- Additional screening, assessment, and evaluation
- Treatment planning for all inmates who have a mental health need
- Enhancement of crisis services
- Provision of extensive treatment services for all inmates who have a mental health need including addition of necessary staff
- Input by Psychological Services Staff into the disciplinary process for inmates who have identified mental health conditions
- Changes to the management of offenders who have mental illnesses who are placed into segregation or observation
- Development of a more cohesive mental health services record
- Changes to the processes related to medical and laboratory orders

Wisconsin DOC and USDOJ agreed to hire a consultant, Dr. Jeffrey Metzner, to develop strategies for addressing these identified needs. Meeting the 13 standards will require significant increases in Psychological Services, Health Services, and Security staff in addition to appropriate space for groups and individual mental health treatment. Both staff and space needs have been identified and are being addressed through the budget process. The Wisconsin Resource Center is undertaking development of a unit for female offenders which will significantly impact the ability of TCI to manage mentally ill inmates. The tentative completion date for that unit is mid-2011.

While some problems can be remedied by TCI, others are much broader and require changes to policy and procedures that reach beyond TCI. Many changes will take time, effort, persistence, and a group effort. This information will change as audits on TCI continue, we will continue to update and educate our staff accordingly. Staff continued efforts and suggestions will be requested as part of the ongoing process of improvement. Dr. Rose Kleman, Psychology Manager, has been appointed as the TCI Agreement Coordinator.

ACCOMPLISHMENTS

Buildings and Grounds

- Added perimeter stun fence
- New office in Security Supervisors Area
- Installed AB inmate locking system
- New inactive records area in Simpson
- Remodeled & moved HSU pharmacy areas
- Gatehouse expansion project

- Divided Simpson room 207
- Fiber optic upgrade
- JBCC new roof
- JBCC telephone upgrade
- REECC new bakery proofer
- Wisconsin Asbestos & Lead Management System update
- Digital TV upgrades
- Installed new bakery oven, bakery proofer, and dishwasher in Prescott
- Completed work orders:
 - Facilities Repair = 1,443
 - Mechanical/HVAC = 262
 - Plumbing = 751
 - Electrical/Electronic = 615
 - Grounds/Miscellaneous = 831

Business Office

During fiscal year 2009 Business office staff:

- Processed over 1,800 Request for Purchases and Purchase Orders.
- Processed over 5,100 invoices / transactions for payment.
- Processed approximately 300 staff Travel Vouchers.
- Processed over 6,800 disbursements requiring issuing checks on behalf of inmates.
- Processed over 15,000 transactions for state collections.
- Receipted over 19,000 money orders / checks for inmates.
- Processed almost 2,000 1408 inmate job / program changes for TCI inmates.
- Processed over 600 inmate accounts for release.

Canteen

During fiscal year 2009 WWCS canteens:

- Processed the following inmate canteen orders:
 TCI= 16,267 JBCC= 9,755 REECC and MWCC= 11,904
- Sold over 1,304,000 items combined.
- Over \$1,118,000 in total combined sales to inmates.
- TCI canteen processed 230 orders totaling over \$1,700 in sales for Holiday orders of cheese, fudge, and crackers.
- TCI processed 207 orders (771 boxes) totaling \$2,700 in sales for Girl Scout Cookies.
- Added or replaced numerous items in canteen.
- Added many healthier choice items and vitamins.

Food Service

- Served over 740,989 meals at an average cost of \$1.07 per meal (\$795,888.18).
- 267 inmates were assigned to work in the Food Service Department in the 70 positions.
- As a community service, over 2500 lbs. of left over foods was packaged, labeled, and provided to a local food bank (Broken Bread, Food Distribution Program).
- In an effort to reduce food costs, 5 institution gardens were planted and maintained by inmates with fresh vegetables (tomatoes, green peppers, cucumbers, onions, radishes and carrots) to be used by the Food Service Department, with excess being donated to a local food bank.

Store

- Processed, filled and delivered over 1300 department requisitions averaging over \$42,000 worth of supplies per month.

- Received over 2300 deliveries from vendors.
- Purchased institution supplies and maintained inventories to provide smooth, continuous operations of departments and the institution.
- Researched and/or purchased numerous non-inventory or new items for departments/institution as needed.
- Provided assistance to staff at the female centers in areas of purchasing or by providing supplies from TCI inventories.

Education

Completions Fiscal 2009

- # of HSED Graduates = 32
- # of HSED Test Components Passed = 359
- # of Dental Laboratory Technician graduates = 11
- # of Building Maintenance and Construction program graduates = 11
- # of Office Software Applications program graduates = 13
- # of Teacher-taught Re-entry Modules = 20
- # of Teacher-taught Re-entry Module Completions = 179
- # of Financial Management Class Completions = 30
- # of Incarcerated Youth Offender Program (IYOP) Participants – unduplicated count = 17
- # of IYOP credits earned (during Fall, Spring, & Summer semesters) = 87
- # of IYOP classes taken = 36
- Two graduation ceremonies were held for students in FY09
- Close to 150 inmates participated in TCI Academic Olympics during the week of August 11, 2008.

Health Services Unit (HSU)

- Completed over 27,000 on-site healthcare appointments and sick calls (MD, NP, or RN).
- Responded to and provided urgent and emergent care on 3063 occasions.
- Physicians and Nurse Practitioners performed over 747 new intake physical exams.
- Triageed over 27,000 Health Service requests.
- Dispensed over 74,400 medication prescriptions.
- Processed over 5,130 labs.
- Performed 414 onsite x-rays.
- Completed 918 Optometry examinations.
- Arranged and completed over 1814 offsite specialty clinic visits.
- Provided nearly 359 digital mammograms onsite.
- Dental department performed nearly 2,640 dental exams and treatments.
- Dental Hygienist completed over 390 routine cleanings.
- Copied medical documents for ACLU class action lawsuit.
- Administered all inmate controlled medications by nurses began June 22, 2009.

Human Resources (HR)

- Continue to enhance Employee Orientation Program.
- Continue to teach/train employees to accurately complete and submit HR/Payroll related paperwork in a timely manner. Enforce timesheet policy, Family Medical Leave Act, leave without pay requests and sick leave.
- Continue to stress importance of confidentiality and privacy of employee.
- Improved communications among supervisory staff and line staff. Developed a method to follow-up on grievances, and timely submissions of employee disciplinary actions.
- Piloting/revising the performing of HR functions at the institution for Bureau of Health Services (BHS)/HSU.

- Assisting with BHS/HSU HR needs as the United States Department of Justice Memo Of Agreement moves forward with hiring of new staff for BHS/HSU area.
- Working with Central Office to develop long range plans for HR coverage within BHS.
- Utilized WCI HR Director, Jeff Smith during the transition of new HR Director from 9/2008 to 3/2009. Jeff also assisted with the orientation and initial training of new HR Director.
- Working with all the various unions to develop new alignments for future negotiations and union issues.

Employee Services Program (ESP)

The TCI ESP committee involves various staff across disciplines to sponsor projects for staff participation throughout the year. Since the inception of this committee in August 2008, several wellness projects have been sponsored:

- Assisted with the TCI Open House in October 2008
- Collected and donated 4 Boxes, 258.5 pounds of non perishable food items to Fond du Lac Food Pantry for Thanksgiving Food Drive 2008.
- Assisted with Corrections Employee Week in May 2009.
- Identified and maintain staff Peer Supporter roster for employee assistance for staff involved in significant or traumatic incidents. Staff referrals are made to the contract vendor, Deer Oaks, Employee Assistance Program.

Inmate Complaint Examiner (ICE)

- Total number of **accepted** complaints filed at TCI for FY2009 was 1472 compared to 1891 total complaints in FY2008.
- In FY2009, TCI currently ranks 8th in complaints filed compared to other DAI facilities.
- Administrative Code dictates that inmates need to exhaust all administrative remedies that the DOC has available prior to filing a complaint. Complaints are returned for not meeting filing requirements: using DOC forms, unsigned, abusive language, use DOC legal name, multiple issues, over weekly complaint file limit, or to attempt to resolve issue prior to complaint being accepted. The total number of **returned** complaints for FY2009 was 1602. The average number of complaints returned to inmates per week is currently at a rate of 31 per week compared to 36 returned per week in 2008; hence, lower number of accepted complaints this year.
- The TCI complaint office was staffed with one full-time ICE and a 40% ICE PA position for calendar year 2009.

Monarch Special Management Unit (MSMU)

- Re-developed MSMU to increase privileges using a behavioral modification model often used at Mental Health Hospitals.
- Hold multi-disciplinary monthly meeting with WMHI to discuss inmates and participate in treatment planning meeting for our mutual clients.
- The AODA Dual Diagnosis STRENGTH program has increased successful completion rates since changing the program from 40-50 weeks to 27-30 weeks.
- Psychologists are working with the Psychiatrist and the inmate assigned to them on MSMU. The Treatment Planning process has become more formalized to allow for better communication between the inmate and the different disciplines involved in the development of the plan.
- 5 hours per week of out-of-cell structured therapeutic activity are being offered to inmates on MSMU Wing One and designated mentally ill inmates in segregation.
- Individual Care Plans are developed by a multi-disciplinary team to assist in further behavioral management of inmates who require additional services to assist them with staying out of segregation or observation status.
- Groups focused on Re-entry initiatives are provided by multi-disciplinary staff.

- Participated in training of staff on Suicide Prevention practices.

Psychological Services Unit (PSU)

- Increased services provided on MSMU including trauma groups, self-esteem programs, and others.
- Increased services provided to inmates housed in segregation including anger management, self-esteem, and others.
- Added groups provided to general population inmates including trauma, stress, and other group activities.
- Initiated enhanced suicide prevention processes including reviewing all inmates placed into observation for a suicide threat or self-harm gesture within 24 hours, reviewing inmates removed from observation status within 24 hours and again within 7 days, and reviewing inmates placed into segregation quickly upon arrival.
- Provided quicker clinical evaluation of inmates entering the institution, inmates entering segregation, and inmates being considered for minimum facilities.
- Provided placement for 2 Doctoral Level interns placed at TCI under the DOC's APA approved internship program.

Records

- Eliminated backlog of sentence computations.
- Continued to implement WICS and provided WICS training.
- Piloted and tested WICS version changes.
- Improved organization within Records and Social Service Office areas.
- Remained fully staffed and cross trained employees in job duties.
- Copied documents for ACLU class action lawsuit.
- Provided Detainer Module training.

Security

- All Security Staff have received annual training by using a 3 day training block. Training consisted of Weapons Requalification, Incapacitating agents update, POSC, Suicide Prevention, Mental Health, Fire Science and Scott Air Pack.
- Suicide prevention drills were conducted monthly on rotating shifts.
- Fire Drills conducted monthly on rotating shifts.
- Assessment of locks and keys were conducted.
- Assessment of and changes in tool control.
- Additional escorts provided in the segregation unit to meet the programming and medical needs.
- Conducted training for ERU, attended the joint ERU.
- Conducted training with the Crisis Negotiations Team, attended joint ERU.
- Reviewed and revised all security post orders.
- All staff have attended mandated training in PREA.
- Completed search of the institution with the assistance of CTC.
- Trained institution staff in use of Ultron II, REACT Band It and ICE Power Shield.
- WICS training completed and system operational.
- Training Calendar created.
- Continue to conduct monthly Staff Training Day on first and second shift.

Social Services

- Continued internships with UW-Oshkosh, UW-Green Bay, and Marian College.
- Continued St. Rose monthly visits and Mothers Offering Mutual Support Group.
- Continued Family Connections and Family Connections added a literacy component.

- Continued with UW-Oshkosh “Inviting Convicts to College” and Independent Decision Making programs.
- Continued to work with Madison Urban Ministries and held simulations.
- Continued to work with Big Brother/Big Sister Amachi project.
- DCC liaison agent assists with pre-release and maximum discharge cases.

COMMUNITY ADVISORY BOARD

Board meetings create an opportunity for those involved to learn more about prison operations and initiatives as well as provide a forum for community input regarding issues that impact the system as well as the community. These meetings are held annually. Membership consists of local and state governmental officials, business leaders, and citizens. Information concerning changes or trends that are occurring within the agencies is presented in order to keep all members informed of new and on-going issues. The members provide us with input into community issues that may have an impact on our operations. Members and affiliations are:

Board Member	Affiliation
Brenda Schneider	Town of Taycheedah
Dan Klawitter	Fond du Lac County Dept. of Community Programs
Eric Gross	Division of Community Corrections
Joe Reitemeier	Association of Commerce
Chuck Brendel	Moraine Park Technical College
John Townsend	State Representative 52 nd Assembly District
Ron Jacobson	Solutions Center
Penny Werner	Victim/Witness Services, DA Office
Peter Grimm	County Circuit Court Judge
Rene Firari Will	St. Agnes Hospital Domestic Violence Program
Sister Stella Storch	Congregation of St. Agnes
Kevin Lemke	Fond du Lac Police Department
Michelle Majewski	Marian College
Christa Williams	Sophia Foundation
Mylan Fink, Jr.	Fond du Lac County Sheriff's Office
Mark Strand	Fond du Lac County Sheriff's Office
Erin Gerred	Communications & Emergency Management
Michael O'Rourke	Fond du Lac County District Attorney
Lindee Kimball	ARC/City Council

INSTITUTION PROGRAMS

SOCIAL SERVICES

TCI Social Services continued to offer a variety of management services affecting the unique needs of the female inmate's incarceration, rehabilitation efforts, and successful return to the community.

Violence in Relationships: Violence in Relationships identifies the different types of domestic abuse and factors in our society what contribute to the problem of domestic violence. This program also covers issues including why the victims stay in abusive relationships and the impact of domestic abuse on the family.

Anger Management: Anger Management is designed to explore anger issues of the female inmate. Historically, women's freedom to express their feelings and emotions has been limited by gender specific stereotypes. Through a cognitive approach, women are given the opportunity to learn and constructively direct their feelings and emotions through group discussions and role-playing.

Alcoholics/Narcotics Anonymous: 12-step self help groups staffed by community volunteers.

SMART: (Self-Management and Recovery Training): This program was included as an alternative to 12-step programming. SMART is a self-help program that emphasizes enhancing motivation, refusing to act on urges, managing life's problems in a sensible and effective way, and developing a positive, balanced, healthy lifestyle.

Parenting and Extended Visits: This program enables the incarcerated female to learn cognitive parenting skills and to actually put these skills into practice through daylong visits with her children.

The extended visitation portion is composed of seven-hour visits conducted in a pleasant home-like atmosphere that allows parent and child to interact in a relaxed, natural setting. Mothers are able to maintain their parental role throughout their incarceration, as well as practice the parenting skills learned in the Parenting Program.

Pre-Release Program: This is a ten module program consisting of Education, Employment, Family Support, Financial Literacy, Health, Housing, Personal Development, Transitional Preparation, Transportation and Wellness. These modules are facilitated by Education, Psychological and Social Services staff. The program includes detailed release planning, resume production, probation and parole supervision information, interviewing skill development and community resource utilization. This program is an identified A&E need.

Cognitive Interventions Program (CGIP): CGIP is a 30 lesson program designed as a pre-treatment program to help get the maximum benefit from other programs such as anger management, domestic violence counseling, or AODA programming. CGIP also has a strong relapse prevention component designed for participants who may have completed other programs without a strong personal commitment to change their problem behavior and find themselves in trouble once again.

St. Rose Family Reunification Program: This program from Milwaukee works with children affected by parental incarceration. The program facilitates parent-child prison visits, children's support groups, individual and family therapy, gender-specific programs for girls and mothers, MOM's groups, and a wraparound based aftercare project.

Family Connections Dane County: This program from Dane County seeks to help maintain and strengthen the bonds between incarcerated mothers and their children through the provision of transportation. In addition, the program seeks to help children cope with their parent's incarceration through a voluntary support group for children and their caregivers.

Family Connections Literacy Program: This program was initially funded by a grant awarded to Family Connections and the Dane County Library Association. Participants are allowed to select a book for each child and then read that book onto a DVD. This is supervised by Family Connections volunteers. The book and tape are then sent to the child/child(s) caregiver.

RELIGIOUS SERVICES/PROGRAMS

Taycheedah Correctional Institution provides a wide range of religious programming for all inmates.

Protestant, Catholic, Islamic, Wiccan, Buddhist, and Native American worship services are held on a regular basis. Average monthly worship attendance for all faiths in 2008-2009 was 1071.

In addition to worship services, 21 different studies and programs are held weekly, bi-weekly or monthly. Some of these programs are open to those of a particular faith and others are offered irrespective of religious preference. The average number of inmates participating in these programs at any given time was 429. More than 350 volunteers help to provide these services and programs.

The programs and studies offered through the Chaplain’s office include the following:

- Campus Crusade Weekly One-on-one studies
- Catholic Monthly Bible Study
- Community Baptist Monthly Bible Study
- Campus Crusade Monthly Christian Video
- Siddha Yoga Monthly Study
- Holy Family Catholic Basic Beliefs Monthly Study
- Rosary Prayer Monthly Study
- Jehovah’s Witness Weekly Study
- Rev. Iles Clergy Weekly Study
- Fr. Sturm Monthly One-on-one visits
- Religious Choir
- Wiccan Weekly Circle and Study
- Assessment & Evaluation Inmate Weekly Bible Study
- Harris Hall Weekly Bible Study
- Lower Lake Bi-weekly Bible Study
- Islamic Monthly Study
- Buddhist Monthly Study
- Faith at Work Monthly Study
- Hispanic Bi-weekly Bible Study
- Alcoholics Anonymous Bi-weekly Meetings
- Narcotics Anonymous Bi-weekly Meetings
- Grief Group: Experiencing the Losses in Life – seven week sessions

The inmate population as of 6/30/2009 reflected the following religious preferences:

- Protestant = 71.8%
 - Catholic = 14.7%
 - Native American = 5.6%
 - Wiccan = 6.7%
 - Jewish = <1%
 - Islamic = 3.7%
 - Buddhist = <1%
 - Other/no preference = <1%
- (The total sums to >100 due to the dual-preference option for Native Americans.)

In fiscal year 2008-2009, the following materials were distributed to inmates at no charge to them. (All materials were donated by outside sources or purchased through funds donated by inmates to the TCI Chapel Fund):

- | | | | |
|-------------|-----|--------------------------|--------|
| • Bibles | 431 | • Religious Publications | 4,460 |
| • Rosaries | 45 | • Religious Books loaned | 3726 |
| • Calendars | 848 | • Greeting cards | 12,052 |

The Chaplain provides one-on-one counseling and visitation upon request by inmates or through referrals by staff. In 2008-2009 there were 458 such counseling sessions. In addition, the Chaplain arranges for inmates to receive clergy visits from pastors and other spiritual leaders. The number of outside clergy visits in 2008-2009 was approximately 1600, or an average of 31 per week.

Special activities and events in 2008-2009 included:

- Prison Fellowship “Angel Tree” program which provides Christmas gifts for inmates’ children; 181 inmates participated and 422 children were provided with gifts.
- Salvation Army Christmas Toy Project which provides toys for inmates’ children in Wisconsin/Upper Michigan; 162 inmates participated and 341 children received toys.
- Rosary Prayer Seminar
- Wiccan Feast Day
- Memorial “Service of Remembrance” for all inmates who had lost a loved one.
- Memorial Services for three inmates who died during the year.
- Christmas Eve services – 4 programs.
- Two volunteer training events attended by 39 new volunteers.
- Volunteer Appreciation Dinner attended by more than 85 volunteers.

PSYCHOLOGICAL SERVICES

Taycheedah Correctional Institution is entrusted with the challenge of providing treatment to incarcerated female inmates. Traditional treatment approaches often neglect issues unique to female inmates. Psychological Service Unit (PSU) staff attempt to provide female inmates with programs geared specifically towards women’s issues.

Our mission is to afford meaningful opportunities for positive change to individuals with mental health needs.

Staffing Pattern

PSU staff consists of:

- 1.0 FTE – Psychologist Supervisor-Management
- 1.0 FTE – Psychologist Supervisor
- 4.0 FTE – Psychologists
- 5.0 FTE – Psychological Associates (non-licensed)
- 0.5 LTE – Psychologist Consultants
- 1.0 FTE – Crisis Intervention Worker
- 2.5 FTE – Office Operations Associate

Psychology staff are fully integrated into housing units to ensure development and maintenance of a multidisciplinary approach comprised of all unit staff including psychologists, social workers, and security officers. Staff are present on the Abrahamson Unit (Medium security), the McCauley Unit (Maximum security unit that also house the institution A&E unit), the Harris Unit (mature inmates), and the Monarch Special Management Unit. A psychologist is also assigned to work with inmates in the Dorms and in the AODA unit which provides programming for all AODA levels except Dual Diagnosis services.

Inmate Population Treated

TCI has the highest ratio of mentally ill inmates of all DAI institutions. At conclusion of fiscal year 2008-2009, approximately 70% of inmates were identified as having a mental health need. Approximately 32% of inmates were identified as having a serious mental illness.

Interventions

Psychological Services provides inter/intra-institutional emergency intervention, as well as intake programming, clinical assessment, treatment, education, and emotional support to

inmates. Cognitive restructuring and skill training are primary strategies of change implementation.

PSU Intake Programming

Assessment & Evaluation Processes: All inmates entering the institution are interviewed within 1 working day to identify any who may have special mental health needs. During that evaluation, records from community agencies can be requested, testing can be completed if needed, notice of confidentiality is given, and inmates are oriented to the process of requesting mental health services if needed in the future. Following that interview, or after a follow-up interview by a staff psychologist, a mental health code is assigned which assess the level of care provided by the PSU staff. Appropriateness for dual diagnosis program is determined. Need for evaluation for sex offender program is identified and an appropriate staff psychologist is assigned to complete that evaluation. A clinical case file is also created during the A&E process.

Group Orientation: All new intake inmates are provided information on PSU services and programs. PSU orientation relays information about normal responses to incarceration. Inmates learn how to direct appropriate requests in order to meet their needs. Sleep techniques are also addressed to assist the inmate to adjust to incarceration.

Treatment and Programming in General Population

Treatment typically occurs in a group format. Individual sessions with inmates are generally accomplished as a function of another PSU role, e.g., review of inmates for minimum placements, review of inmates for mental health codes, weekly reviews of inmates in segregation, screening of inmates for appropriateness for group programming, etc. Targeted short term individual psychotherapy can be provided as clinically necessary and is determined by unit psychological services staff or at the referral of psychiatrists. Groups offered in general population include:

- **Psycho Educational Class for Trauma & Abuse (PE Class):** A structured program to acquaint the inmate with the basic terms, concepts and skills for cognitive self-counseling that will serve as a foundation for further services as well as meet the immediate needs of many inmates adjusting to prison life. The focus of the group is to address the impact of trauma and abuse on an individual's life. This group is provided to inmates by staff referral only.
- **Childhood Abuse Therapy Group (CAT):** This treatment program is designed to enhance inmate's ability to process the emotional impact of childhood abuse on their lives, and relate that insight to their behavioral patterns and cognitive judgment.
- **Sex Offender Treatment (SOT):** SOT is a group psychotherapy treatment designed to assist sex offenders in living an open, accountable, and victim-free lifestyle by reducing and effectively managing re-offense risk factors. The SOT curriculum includes a complete Criminal Thinking (CGIP) component at the beginning of treatment, followed by intensive group psychotherapy focused on realizing the goal of an effective re-offense prevention plan. Appropriate psychological assessments are utilized to identify inmates' areas of strength and risk. The group is open-ended, completing when inmates have met specific criteria.
- **Other:** Other groups are provided as needed to general population inmates. During this fiscal year stress management groups, groups dealing with emotional regulation for inmates under age 21, and life-skills groups were provided.

Other Services Provided by PSU

On-Call Crisis Management Including Observation and Restraint Placements: PSU staff are on call 24 hours per day, 7 days per week. Call is shared among all PSU staff with back-up call provided at all times by the Psychologist Supervisor or a designee. Staff are regularly called for incidents of inmate self-harm or threats of self-harm or in instances of inmate inability to maintain control which has required placement in restraints. PSU staff return to TCI within 24 hours of the placement to evaluate the inmate. Inmates who require restraint placement as a result of a security need are to be reviewed face-to-face by a PSU clinician within 2 hours of being placed. As noted above, for fiscal year 2008-2009 there were 170 placements of inmates in Clinical Observation, the majority for threats of self-harm. There were also 30 placements of inmates in restraints during the same time frame.

Segregation and Transition Programming: Inmates placed into segregated status are interviewed by PSU staff upon intake to gather a baseline mental health status and determine if additional mental health care is required. A brief segregation round is made on all inmates in segregated status on a weekly basis. Additionally, one quarter of all inmates in segregated status are interviewed more thoroughly every week, ensuring that all inmates in segregation receive contact with a psychological services staff person and multidisciplinary case review on at least a monthly basis. Inmates moving into transition status also are reviewed regularly by a multidisciplinary team that includes a PSU clinician, social workers, and security staff. Groups are also provided to inmates housed in segregation who have identified serious mental health needs with a goal of 5 hours of providing out of cell programming for each seriously mentally ill inmate. Programs are provided by psychologists, social workers and other staff and are generally psychoeducational in nature.

MONARCH SPECIAL MANAGEMENT UNIT

Monarch Special Management Unit (MSMU) is a specialized management unit for inmates who have difficulty in adjusting to the prison environment due to mental or emotional problems and/or cognitive deficiencies or who have a special need identified by medical staff or via other means requiring specialized care. Program components are highly individualized and consider the inmate's security, daily living, clinical, medical, educational, offense related, and rehabilitative needs. Each inmate has an individual treatment plan that is reviewed periodically to ensure that goals are met. Multidisciplinary meetings comprised of psychologists, crisis intervention workers, social workers, health service representatives, educational staff, and security personnel occur twice weekly. Additionally, a psychologist or crisis intervention worker familiar with the inmates attends inmate appointments with the unit psychiatrist each week to ensure comprehensive review of the inmate's needs.

Psychology staff facilitate group therapy or individual therapy depending on the inmate's needs, in collaboration with social workers, crisis intervention workers, health services staff, and appropriately trained security staff.

- **Anger Management:** Anger management is a cognitive program designed to address general principles and issues surrounding anger and anger management. The goal of the program is to present information that enables inmates to identify and effectively manage anger. The curriculum includes education on topics such as different types of emotions, physical effects of emotions, the impact of thoughts upon emotions and behavior, stress and anger reduction, and assertiveness skills.

- **Life Skills:** This group utilizes a cognitive program designed to improve awareness of self and others. The group covers topics of interest in daily life in the community including grocery shopping, financial management and budgeting, citizenship, finding housing, and adult health. It is co-facilitated by education and social work staff.
- **Childhood Abuse Therapy Group (CAT):** This treatment program, like the one offered to general population inmates, is designed to enhance inmate's ability to process the emotional impact of childhood abuse on their lives, and relate that insight to their behavioral patterns and cognitive judgment.
- **Stress Management:** This program, like its general population counterpart, assists the inmate in developing coping strategies and skills useful in managing routine life stressors and those specific to topics most pertinent to a correctional setting.
- **Other:** Other programming groups are offered as needed on the unit and include self-esteem, emotion regulation, and awareness of current events.

Dual Diagnosis/Strength Programming

MSMU houses the Strength program. Strength is a program for women with co-occurring AODA and mental health concerns began in late 2004 and have expanded during this fiscal year to include beds for women as Alternative to Revocation. Based on a modified therapeutic community model, the program utilizes comprehensive pre-screening, daily inmate-led community meetings, individual and group treatment, and through homework to total more than 600 hours of programming that meets many A&E needs. The program is co-facilitated by a correctional social worker and a psychologist with consultation with other professional including psychiatrists, health services staff, other psychologists, and educational personnel. Programming occurs in four segments with a short break in between. Groups include AODA education, CGIP, Parenting, Problem Solving, Anger Management, Domestic Violence, Diversity, Women's Issues, Grief and Loss, and others with a primary goal of long-term relapse prevention.

AODA

The Taycheedah Correctional Institution AODA Program is specifically developed for women in recovery and works towards empowering women to make healthier life choices.

About the program:

- 16 week residential program where inmates are housed on a unit dedicated to AODA programming. The unit is highly structured with inmates being held accountable for all inappropriate behaviors through the use of Program Sanctions.
- 12 group members assigned to each group.
- The program includes and meets the A&E recommended needs of the Cognitive Intervention Program, Anger Management, Violence in Relationships Counseling, Life Skills, Relapse Prevention, and Victim Impact.
- Group members learn to develop new skills through class discussion and process groups, videos, role playing, lecture, games, handouts, packets and community meetings.
- Along with AODA education, the program is designed to develop appropriate coping skills, social skills, assertiveness training, listening skills, feelings, codependency issues, relationship issues, boundary issues, stress management and relapse prevention.

EDUCATION

Educational programming at Taycheedah Correctional Institution reflects the needs of the female inmate with the intention of enhancing basic education, providing practical job skills, and helping inmates acquire attitudes and self-direction needed to perform ethically and productively in the community upon release. Inmates can participate in academic and vocational education in Simpson Hall while at Taycheedah. Academic education is also available for students housed in Monarch. In addition, the school offers library services, correspondence education, and computer assisted instruction as well as teacher-taught Re-entry modules.

Educational Enrollment and Completion Data: FY 2008

Average # Full and Part-time Students	186
Average # Academic Students	118
Average # Title 1 Students	10
Average # Special Education Students	8
Average # Vocational Students	36
Average # Students Taking Classes at Monarch	45
Total # HSED components completed	348
Total # HSED/GEDs Earned	33
Total # of Vocational Completions	
Fundamentals of Building Maintenance and Construction	11
Dental Laboratory Technician	11
Office Software Applications	13
Incarcerated Youth Offender Program	
Total # of participants	17
Average # MATC credits earned	5
Total # of MATC credits earned (all participant combined)	87
Total # of Teacher-taught Re-entry Modules	20
Total # of inmates completing Teacher-taught Re-entry Modules	179

Adult Basic Education: The goal is to assist the inmate in achieving a High School Equivalency Diploma (HSED). Classes are offered in Reading, Writing, Social Studies, Science, Math, Civics, Health and Employment Skills. Assessments are completed in career interest and aptitudes to assist the inmate in job selection or continued education. Taycheedah averaged 118 adult basic education students during Fiscal Year 2009.

Title I: The Title I program specifically targets delinquent and neglected adult basic education students who are under 22 years of age and who do not have a high school diploma or HSED. Its emphasis is to enhance and reinforce all disciplines of learning with a focus on individual responsibility and accountability. The main goal of Title I students is to set their goals and then work through the process that leads to completing their goals. Taycheedah averaged 10 Title 1 students during Fiscal Year 2009.

Special Education: The Special Education program (SPED) provides additional learning opportunities for students under 22 years of age identified with educational disabilities which have delayed their educational progress including obtaining a high school diploma or HSED. Taycheedah averaged 8 special education students during Fiscal Year 2009.

English as a Second Language: The English as a Second Language (ESL) program provides assisted instruction to inmates whose primary language is not English. ESL students can take a Basic Reading/Communications classes, supplementing their instruction through computer assisted instruction and tutorial assistance.

VOCATIONAL

The Moraine Park Technical College (MPTC) certifies vocational programs offered at TCI. Credits earned are transferable to the Wisconsin Technical College System for continuing education. Inmates earn certificates from MPTC upon completing one of the following Taycheedah taught programs:

- Fundamentals of Building Maintenance and Construction Program
- Dental Laboratory Technician Program
- Office Software Applications Program

Fundamentals of Building Maintenance and Construction Building Maintenance and Construction is a competency-based diploma program certified through Moraine Park Technical College. This program prepares students for entry-level employment in the construction and building repair and maintenance areas. Students learn to repair and maintain physical structures of commercial and private establishments such as factories, office buildings, hospitals, apartment houses, and homes using hand and power tools. They learn the safe and effective use of hand tools, portable power tools and stationary power tools. They learn basic carpentry, electrical, plumbing and blueprint reading and on the job safety.

Dental Laboratory Technician: The Dental Laboratory Technician program is a competency-based certificate program certified through Moraine Park Technical College. Participants earn 15 credits with learning to produce and repair full and partial removable dentures students. Courses include Introduction to Dental Technology and Anatomy, Introduction to Removable Prosthetics, Advance Removable Prosthetics, and Removable Partial Dentures-Acrylic as well as Student Success and Occupational Communications. Taycheedah is also working with the Department of Work Force Development-Bureau of Apprenticeship Standards, allowing participants to also earn apprenticeship hours during the classroom and laboratory phases of the program. Program graduates could work at dental laboratories manufacturing full and partial removable dentures.

Office Software Applications: The Office Software Applications Certificate Program prepares the inmate for various clerical and related office positions. This 4-6 month, self-paced course includes instruction in Beginning Keyboarding, Microsoft Office Suite including Windows XP, Word XP, Excel XP, PowerPoint XP, Access XP, and Integration, Pre-Employment Seminar, and Student Success. The inmates also learn core abilities that are transferable to any job: such as working productively, learning effectively, communicating clearly, acting responsibly, valuing self positively, and thinking critically and creatively. The inmate receives 13 transferable credits and an Office Software Applications Certificate from MPTC upon completion.

INCARCERATED YOUTH OFFENDER PROGRAM

Eligible inmates at Taycheedah continued to participate in the DAI-wide Incarcerated Youth Offender Program (IYOP) during fiscal 2009. Students have to be under 26, within five years of anticipated release and have graduated with a high school diploma, GED or HSED to participate in the program. Seventeen IYOP participants earned a total of 87 associate degree credits while taking one or more of the following classes from the Milwaukee Area Technical College's (MATC) liberal arts transfer program during the summer and fall 2008 and spring 2009 semesters:

- Abnormal Psychology
- America Since 1877
- America Through 1877

- American National Government and Politics
- Elements of Speech
- English 1
- English 2
- Environmental Science
- High Level Wellness
- Introduction to Ethics
- Introduction to Modern Cinema
- Introductory Psychology
- Principles of Macro Economics
- Valuing Diversity

Taycheedah was one of five DOC sites that initially piloted the program during the second half of Fiscal 2006.

Other Services:

- College Correspondence is available at inmates cost with DOC/TCI approval
- Computer Aided Instruction: Keyboarding, Skills Bank, GED Interactive, Plato, JobNet and other computer-based software applications.
- Teacher-taught Re-entry Modules.
- Annual Academic Olympics

HARRIS HALL COMMUNITY SERVICES

TCI has an inmate Community Service Program in Harris Hall that has established a partnership with a number of community agencies throughout the state.

Community Service inmates knit, crochet, and sew clothing, stuffed animals, and blankets for many non-profit organizations. TCI does not sponsor any fundraisers, but donates goods to be sold, auctioned off or raffled to non-profit organizations for their fundraisers. A total of 8,229 inmate hours were worked in FY 09 with 961 items donated back to 31 charities. A few community organizations reaping inmate community service projects:

- | | |
|--|---|
| ARC | The Monthly Morning Ministry-Women of Immanuel Trinity Church |
| Baby Safe Haven, NY | OVSP Rape Council |
| Beacon House | Project Linus |
| Church of Our Savior | Restorative Justice |
| Division of Community Corrections Region 3 Milwaukee | Rosita Fund |
| DOC State Employees Partners in Living Campaign | Service League |
| Family Connections | Sigma |
| Fond du Lac Christian School | Sisters of St. Agnes Convent |
| Fond du Lac Police | Solution Center |
| Habitat for Humanity | St. Agnes Hospital Cancer Center |
| Heaven's Touch Ministry | St. Agnes Hospital Domestic Violence Program |
| Hospice Home of Hope | Susan G. Komen for the Cure/Madison |
| Hospice Hope | Victim Services, Rape Crisis Center |
| Milwaukee Crime Victims / Survivor's Resource Fair | Volunteer Center of Fond du Lac County |
| | WCA |
| | WCASA |
| | Windhover Art Center |

SIMPSON BASED COMMUNITY SERVICE

Community service runs Tuesday through Friday approximately 12 hours per week. Organizations of the community donate materials to be assembled or created, once finished by TCI inmates the items are sent back to the organizations.

Projects made were baby Layette sets, Hospice Hope afghans, and lap robes totaling 1,211 inmate hours worked from September 2008 to June 2009. These items were donated back to community organizations: Orphan Grain Train and Marquette University.

RECREATION

Recreational programming continued to be a valuable tool in the reduction of inmate idleness, and to build self-esteem and a feeling of accomplishment. A healthy body contributes to a healthy mind and attitude. Simpson recreation area is accessible for all disabled inmates. Recreation periods are offered at various times Monday – Saturday.

Activities and programs included:

Weight training:

Four stack weight training machine
Eight piece weight training set

Team sports:

Basketball	Softball	Badminton
Volleyball	Kickball	

Exercise equipment:

Treadmills	Recumbent and up right bikes	High and low impact aerobic tapes and DVD's
Elliptical machines	Bo-Flex	
Stair steppers		

Individual activities:

Walking/jogging	Hacky Sac	Double Dutch & Individual jump ropes
Ping Pong	Fit balls	
Frisbee		

Summer Softball Tournament consisted of 6 teams with 18 games with approximately 450 inmates participating.

Volleyball league consisted of 13 teams with 25 games with approximately 726 inmates participating.

Adaptive Recreation offers therapeutic techniques for handicapped or special needs rehabilitation services to inmates.

HEALTH SERVICES UNIT

One HSU Manager and one HSU Assistant Manager provide management of HSU staff and health care services administered while reporting to Bureau of Health Services (BHS) and the Warden at TCI. The TCI HSU has undergone many positive changes during fiscal year 2009. TCI HSU provides both on-site and off-site specialty care for a wide range of clinical specialties.

Improvements

The number of direct patient care and support staff has been increased as part of the FY 09-10 Governor's State Budget. The table below lists the increases in HSU staff.

Classification	2008	2009
Nurse Clinician 2 (RN)	18.0 FTE	18.0 FTE
Licensed Practical Nurse (LPN)	10.5 FTE	10.5 FTE
Medical Program Assistant - Associate	3.5 FTE	4.5 FTE
Nurse Practitioner	2.5 FTE	3.0 FTE
Medical Assistant	2.0 FTE	3.5 FTE

- TCI now has 18.0 Nurse Clinician 2 (registered nurse) FTE's (full time equivalents) giving us 24 hour nursing coverage.
- Added a second nurse to our Patient Case Management system which is patterned after the community model for managing patients with multiple medical issues.
- Due to Federal Injunction decision on April 24, 2009, based on American Civil Liberties Union lawsuit, as of June 22, 2009, all controlled medication distributed at TCI by LPN or greater licensure.
- Offers on-site digital mammography services for routine breast cancer screening replacing routine x-ray type screening.
- Utilize Advanced Care Practice teams (MD + NP) for patient care which provide for increased continuity of care.
- Provide increased Psychiatry coverage a minimum of 110 hours per week.
- TCI held a Health Fair for inmates in May of 2009 – over 320 inmates participated.

Chronic Care Clinics

Chronic disease is identified during the intake process per patient self report, the Health Assessment Form completed on intake, and information received from Health Transfer Summary Form. Chronic care clinics are designed to prevent exacerbations from chronic disease, provide consistent monitoring of patient's with chronic illness, and to provide education to patient's with or are at risk for chronic disease. The DOC has specific treatment care plans (guidelines) for the management of the various chronic illnesses. The specific treatment care guidelines, consistent with community standards, determine the frequency of lab monitoring and advanced care provider visits. The advance care provider determines follow-up on an individual patient need/basis. The chronic care clinics are also monitored by nurse clinicians. Nurses assigned to specific chronic care clinics plan educational opportunities twice a year for each chronic illness population. Individual assessments and education is provided.

The format of the Chronic Care Clinics has undergone a transition to improve efficiency and efficacy. The updated approach to the chronic care clinic places emphasis on initiation of chronic disease management based on the specific need of each individual patient. The MD/NP initiate chronic care clinic appointments and scheduled follow ups based on current chronic disease treatment guidelines and the patient's current condition. The benefits of this approach include minimizing duplication of costly labs tests that are ordered independently through the various Chronic Care Clinics, decreased duplication in appointments with providers, and early detection of complications/exacerbations of the disease process which ultimately reduce the need for hospitalizations.

Chronic Care Clinics Fiscal Year 2009

Chronic Condition	Number of Inmates with Diagnosis
Asthma	206
Cardiac	33
Hypertension	98
Diabetes	58
Seizures	38

HIV+	5
Hepatitis C +	64
Malignancy	4
Hyperlipidemia	54
Pregnancies/Deliveries	11

AMERICANS WITH DISABILITIES ACT (ADA) COORDINATOR

The Wisconsin Department of Corrections complies with the American with Disabilities and Rehabilitation Act. The ADA Coordinator at TCI is the Corrections Management Services Director (CMSD), Mr. Charles Brown. Mr. Charles Axelsen, Buildings & Grounds Superintendent, was appointed as back-up ADA Coordinator. The ADA Coordinator may be contacted in writing by using form DOC-761 (Interview/Information Request form). Additionally, inmates with disabilities are encouraged to contact their teacher, social worker, or housing unit sergeant in writing using DOC-761 for accommodations for specialized needs. The role of the ADA Coordinator is to assist the institution in accommodating those with disabilities. Health services requests still need to be routed through HSU, even if assistance from the ADA Coordinator is being sought.

CLASSIFICATION REVIEW COMMITTEE

The Classification Review Committee is responsible for reviewing the inmate's rehabilitative status, recommending security classification, and institution placement recommendations.

The Classification Review Committee consists of a Bureau of Offender Classification and Movement Coordinator and TCI representatives from security and treatment disciplines.

ASSESSMENT & EVALUATION

The Assessment & Evaluation (A&E) Specialist is responsible for reviewing the inmate's Judgment of Conviction, Criminal Complaints, Violation Information, and Pre-Sentence Investigations and then making recommendations for programs, security classification, and institution placement. The recommendations are then approved, altered or disapproved by another Offender Classification Specialist. The initial classification is conducted by the Offender Classification Specialist.

SECURITY AND SAFETY

It is the mission of TCI's Security Department to provide a safe and secure facility for the public, staff, and inmates as well as being a role model while maintaining professional conduct for TCI and the Department. We want to enable the inmates to learn positive and constructive ways to deal with their issues.

Visits

As an institution, we encourage visits from family members and significant others. We feel this is an integral part of inmates' rehabilitation and reintegration into the community. For FY 09, there were 7,307 visits and 13,336 visitors.

Laundry

The laundry at TCI runs with one officer and employs six inmate workers. The seamstress sews DOC patches and chevrons on officer uniforms, mend and repair inmate clothing and institutional items.

Maintenance Officers

The Maintenance work crews, of 2 correctional officers and 36 inmates, are responsible for maintaining 27 acres of land inside the perimeter fence. TCI established utilizing medium-out and minimum custody inmates to maintain the outside perimeter grounds of TCI.

Transportation

TCI is responsible for transporting all inmates within WWCS. TCI staff transports a large number of medical appointments. For fiscal year 2009, TCI transported 320 emergency trips and 1864 scheduled medical trips.

Conduct Reports

There were 2,842 total conduct reports: 1008 major and 1834 minors. 108 appeals were filed.

HOUSING UNITS

Addams Hall

Addams Hall was built in 1932, and occupied in 1933 as the Wisconsin Home for Women. Addams Hall now houses inmates involved in AODA Treatment. Addams Hall houses 3 separate AODA residential treatment programs. Inmates participating must be medium or minimum security. Alternative to Revocation (ATR) inmates also participated in the program. All programs are 16 week closed sessions.

Dorms/Barracks

The Dorm, which is an open bay unit with bunk beds lined up against the walls, opened its doors on August 2, 1997. It has a capacity of 146 medium-security inmates.

Segregation Unit

The Segregation Unit is utilized as a means of providing security separation of inmates whose behavior substantially affects the safe and secure operation of the Institution. Placement within this type of housing will usually occur through an inmate disciplinary process regarding the inmate's violation of department and institution rules and regulations. The Segregation building facilities include: 68 cells, 4 of which are observation cells and eight secured recreation areas.

Abrahamson Unit (AB)

This unit was originally opened in 1995 and housed the maximum security inmates. In 2004 this unit was named the Abrahamson Unit and the medium security inmates were moved to this unit. It is a 96-cell unit with a maximum capacity of 184 inmates. Inmates are housed two per cell with the exception of eight handicap single cells.

Monarch Special Management Unit (MSMU)

The Monarch Special Management Unit opened January 2002, as a specialized housing unit for female inmates with mental health needs.

The MSMU is dedicated to providing quality mental health services for adult female inmates utilizing a multidisciplinary approach. The program blends psychological services such as psychotherapy groups, life skills, stress management, and trauma programming with crisis management, release planning, collaboration with community programs, and onsite medical and psychiatric care to provide a therapeutic milieu whose goal is long-term stabilization and

effective evaluation and diagnoses so that offenders can continue to have their needs met when they are released into the community. Safety and security is maintained by correctional officers, who also participate in therapeutic interventions and are an integral part of the treatment approach.

MSMU has the capacity to house and provide on-unit treatment to 64 inmates. Three of these cells are reserved for inmates needing more extensive observation by security and treatment staff. 16 of the beds are reserved for inmates in the 6 month STRENGTH dual diagnosis program. 8 beds are for inmates in segregation or higher management status, and out-of-cell structured therapeutic activities are provided to these inmates as well to assist in the overall mission of the unit.

McCauley Unit (MC)

The MC Unit was transformed from the medium unit at the beginning of November 2004. The unit consists of 125 cells with a maximum capacity of 240 inmates. The north wing of the building houses A&E, ATR, and Probation and Parole (P&P) holds. The west wing of the building houses maximum general population inmates.

Harris Hall

Harris Hall was constructed in 1918 and opened in 1921. It was originally designed to house the superintendent and offices on 1st floor. The 2nd and 3rd floors were designed and built as offender living quarters. As described in the Daily Reporter on 11/4/1922, “The Taycheedah Home is not an industrial school for women. It is rather the stopping place of many girls who are headed on the downward path and who through kindness and love are once more headed straight.”

Harris Hall currently houses “mature” inmates and has 2 floors of inmate rooms, which house medium and minimum security inmates, with 1 to 4 inmates per room. Criteria for living in Harris Hall include; at least 40 years old and good behavior. This unit is less restrictive as inmates are not “locked in”.

RECORDS

The Records Office is responsible for the management of inmate legal and social service files; the dissemination of legal and parole commission information; the facilitation of release, transfer and admission date; the maintaining and updating of sentence information; and the provision of notary services.

Race/Ethnicity:

White	63%
Black	29%
Asian	1%
American Indian	7%

Transfers:

In	417
Out	493

Age:

Under 18	1
18-20	30
21-30	249
31-40	227
41-50	190
51-60	50
61 & Over	4

Releases:

Parole	23
MR/ES	662
Max Discharge	24
Temps/ATR	73
Other	3

Numbers reflect general population & A&E

INMATE COMPLAINT REVIEW SYSTEM

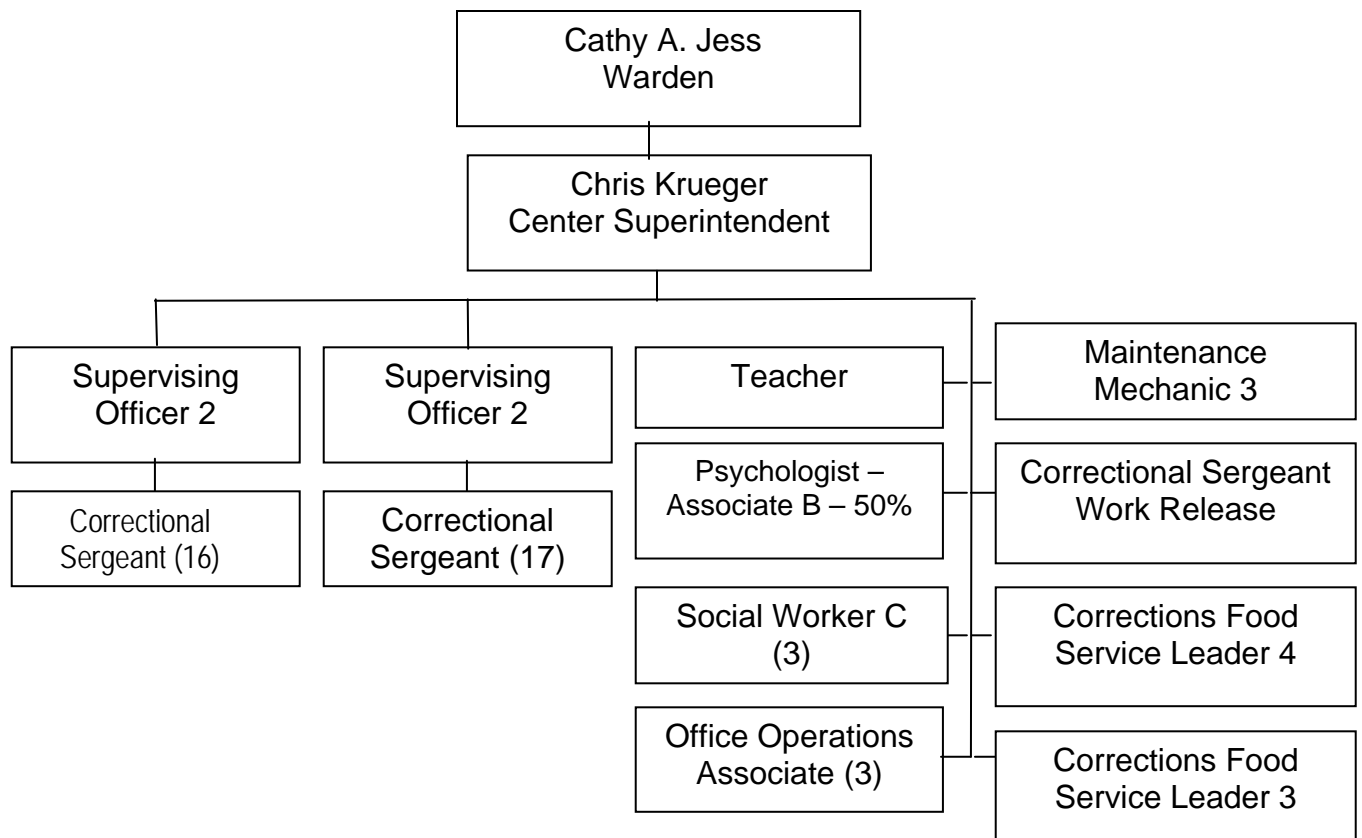
The Inmate Complaint Review System (ICRS) is established pursuant to the Wisconsin Administrative Code DOC 310. The ICRS provides a process by which grievances raised by inmates may be investigated and addressed. Under the direction of the Warden, the Institution Complaint Examiner (ICE) investigates the issues raised by inmates and makes a recommendation to the Warden regarding a decision on each complaint. The ICE is then responsible to ensure implementation of the Warden's decision.

During the fiscal year 2009, Taycheedah Correctional Institution received and processed 3074 inmate complaints. This total includes accepted and returned complaints.

COMPLAINT CATEGORY	NUMBER OF ACCEPTED COMPLAINTS
01 – STAFF	164
02 – CORRESPONDENCE	48
03 – DISCIPLINE	85
04 – MEDICAL	397
05 – PAROLE	1
06 – PERSONAL PHYSICAL CONDITIONS	124
07 – PROPERTY	416
08 – RULES	2
09 – RELIGION	7
10 – WORK AND SCHOOL PROGRAMS	26
11 – VISITING	57
12 – OTHER	73
13 – FOOD	19
14 – CLASSIFICATION	7
15 – COMPLAINT REVIEW SYSTEM	1
16 – DISCRIMINATION	1
17 – INMATE ACCOUNTS	30
18 – BCE	5
19 – HIPPA	4
20 – STAFF SEXUAL MISCONDUCT	4
21 – INMATE SEXUAL MISCONDUCT	1
TOTAL ACCEPTED COMPLAINTS:	1472

John C. Burke Correctional Center Organizational Chart FY 09

Waupun, WI



JOHN C. BURKE CORRECTIONAL CENTER

900 S. Madison Street
P.O. Box 900
Waupun, WI 54963-0900
(920) 324-3460

Superintendent Chris Krueger



Year Center Opened: 1990
Center Security Level: Minimum and Minimum-Community Custody
Number of Acres: Approximately 20

ACCOMPLISHMENTS

Buildings & Grounds

- Playground equipment installed.
- Gardens expanded and composting started.
- Eight PREA cameras installed.
- Two computers installed in the library.

Education

- 14 inmates received their HSEDs. 1 received their GED.
- Collaboration with UW-Oshkosh, MATC, Cardinal Stritch, and MPTC communication, criminal justice, education, and social work classes.
- Ongoing collaboration with Ries Driving School for behind the wheel classes and testing for eligible inmates.
- 14 students enrolled in IYOP completing 40 classes.
- 8 inmates taking correspondence courses.

Social Services

- ATR Group had 23 graduates.
- Pre-release program expanded with 84 modules completed.
- Parenting and CGIP contracted through Attic Correctional Services.
- Expansion of Employment Support efforts.
- Inmates participated on victim impact panels for Sheboygan County.
- Inmates volunteer for the City of Waupun, PAVE, Waupun Food Pantry and the Dodge County Humane Society.
- Voices program continues with groups from Waupun, Beaver Dam, Door County, Waukesha, Milwaukee, and Horicon.

Employment

- Work release continues with an average of 40 inmates.
- Inmate project crews continue at numerous sites.

Employee Services Program

- Identified and maintained staff Peer Supporter roster for employee assistance for staff involved in significant or traumatic incidents. Staff referrals are made to the contract vendor, Deer Oaks, Employee Assistance Program.
- Collected and donated school supplies for those in need at the Waupun Middle School in September 2008.

PROGRAM PARTICIPATION AND COMPLETIONS

Program	Number of Participants	Number of Program Completions
Parenting	54	50
CGIP Phases I & II	125	113
Independent Decision Making	24	23
Pre-Release	26	84

COMMUNITY RELATIONS BOARD

Board Member	Affiliation
DeAnn Thurmer	Waupun Memorial Hospital
Ed Madere	Waupun City Administrator
Joe Meagher	Waupun School District
Sharon Bos	National Bank of Waupun
Nikki Hoerth	Division of Community Corrections
Wayne Buteyn	Werner Harmsen Furniture
Mark Kastein	KFIZ Radio
Todd Nehls	Dodge County Sheriff
Honorable Daniel W. Klossner	Dodge County Circuit Court Branch 1
Carol Owens	Wisconsin State Representative
Dick Spanbauer	Wisconsin State Representative
Gerald Heeringa	Citizen Member
Mylan Fink, Jr.	Fond du Lac County Sheriff's Office
Steve Bauer	Dodge County District Attorney
Jodi Stieger	City of Waupun Mayor
Carol Roessler	Wisconsin State Senate
Dale Heeringa	Waupun Police Chief
Timothy Lundquist	Dodge Correctional Institution Warden
Chris Krueger	John Burke Correctional Center Superintendent
Mike Thurmer	Waupun Correctional Institution Warden

RESTORATIVE JUSTICE

- Restitution Collected - \$66,967.07
- Child Support - \$41,980.19
- Victim/Witness and DNA Surcharge - \$12,107.87
- Room, Board and Transportation collected - \$206,291.24
- Community services projects included:

- Beaver Dam High School Book Project
- Locks of Love donations
- 200+ hat/mitten sets
- 45 dog blankets
- 50+ blankets
- 13 quilts
- 3 children's outfits
- City downtown planters
- Roadside clean-up
- Harris Park beautification
- PAVE Shelter upkeep

PROGRAMS

Adult Basic Education

The Center has one full-time teacher who works with inmates, both enrolled in preparatory classes and on the school waiting list, to prepare them for High School Equivalency Diploma tests which are offered on-site.

Alcoholics Anonymous (AA)

Recovery support group.

ASHA Services for Women

Group allows for the exchange of ideas and experiences regarding women's issues to effect a change in their lifestyles.

Beaver Dam Book Project

Inmate volunteers edit books that have been put on a laptop. The book is downloaded at the Beaver Dam High School and students with learning disabilities can access the books on the school computer and have them read to them.

Cognitive Interventions Program

Examines beliefs, attitudes and thinking patterns; provides tools to accomplish lasting self-change.

Community Service Crocheting and Quilting

Inmates make products utilizing donated materials. The completed projects are donated to community organizations.

Gamblers Anonymous (GA)

Recovery support group.

Independent Decision Making

This course empowers inmates to utilize skills to make good decisions regarding a variety of subjects to include relationships, stress, work and leisure.

Narcotics Anonymous (NA)

Recovery support group.

Parenting

This program examines current practices and provides tools to effect appropriate parenting skills.

Religion

Opportunities afforded for inmates to participate in spiritual worship. Wiccan study group was added in 2009.

St. Rose Visiting Program

Family reunification program designed so that children and their mothers maintain contact.

VOICES

Reach out to youth in the surrounding communities to educate and deter the youth from participating in negative behavior.

Work Release

Community Custody inmates may be considered for work release opportunities.

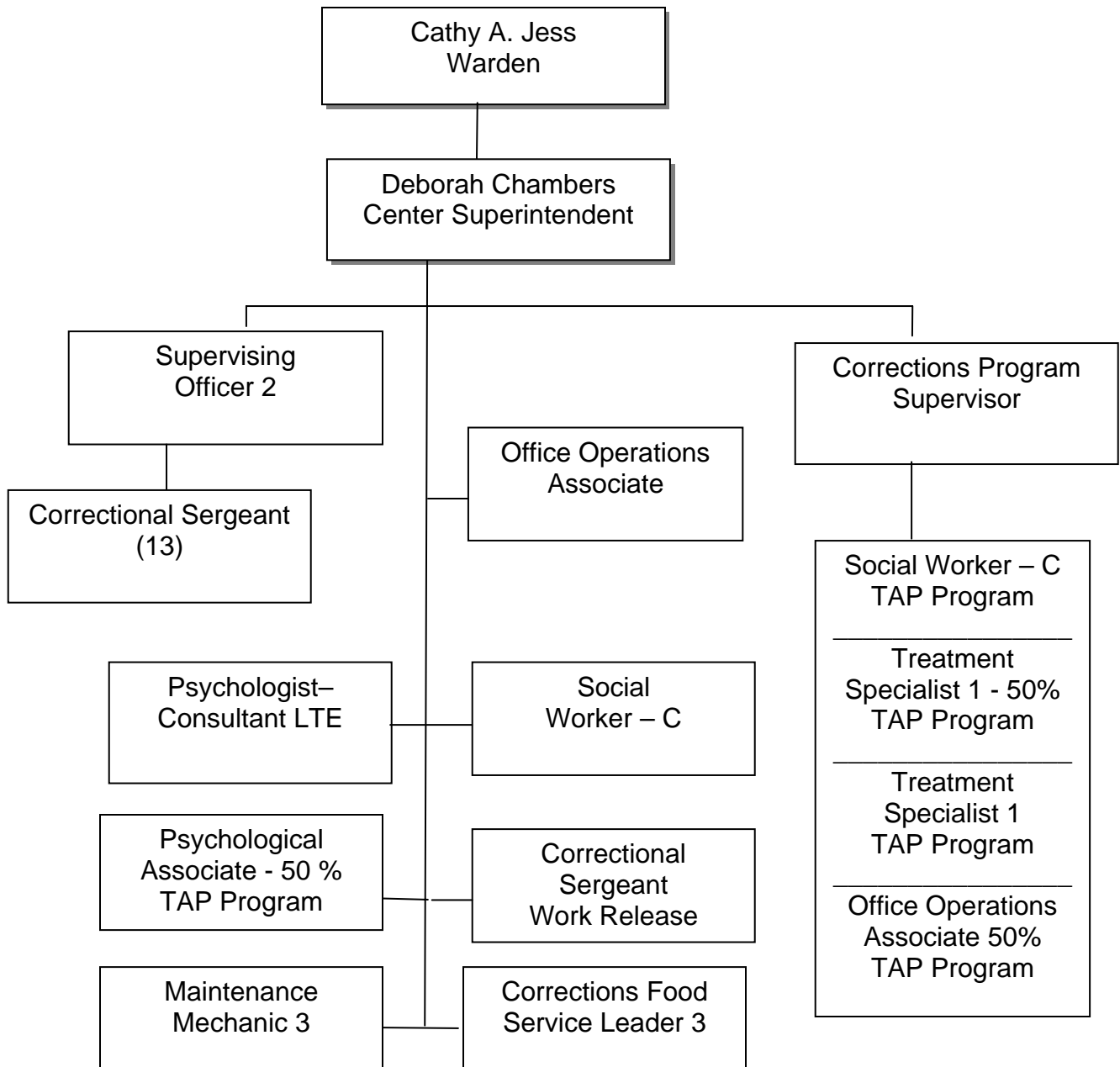
VOLUNTEERS

Alcoholics Anonymous
Assembly of God
ASHA Family Services
Brother Bob's Bible Study
Elmbrook Church
Gamblers Anonymous

Mentoring Connection
PAVE Beaver Dam
Prison Aftercare Network of
Wisconsin
Stretcher Bearers Ministries
St. Rose Family Reunification

Milwaukee Women's Correctional Center Organizational Chart FY 09

Milwaukee, WI



MILWAUKEE WOMEN'S CORRECTIONAL CENTER

615 West Keefe Avenue
 Milwaukee, WI 53212
 (414) 267-6101

Superintendent Deborah Chambers



Opened in: 2003
Number of Acres: 1 acre
Center Security Level: Minimum and Minimum-Community Custody

ACCOMPLISHMENTS

Buildings & Grounds

- Bathroom remodel continues.
- New steps installed from street to parking lot.
- New basketball goal installed.
- Resurfaced parking lots.

Education

- Resource Room – contains GED Prep materials, computers for developing resumes/cover letters and Job net; information regarding job seeking, employment related videos and basic legal resources.
- A teacher from the Next Door Foundation on site once per week for GED/HSED classes.

Employee Services Program

- Committee sponsored donations to Children's Hospital of mittens, hats, gloves, blankets, and knitted animal puppets.
- Sponsored potluck meal for staff during Corrections Employee Week.
- Identified two staff as Peer Supporters with no incidents to report.

Health Services Unit

- On site nursing services provided by agency contract with Country Nurses.
- Nurse Practitioner position temporarily filled by a Supervisor.
- Psychiatrist is on site twice monthly to prescribe and monitor medications resulting in a tremendous decrease in off site scheduling.

Mental Health

- Current staffing of 1 LTE and 1-50% psychological staff at the facility.

Personnel

- 5-year AODA Plan on file for all treatment staff who need it.
- New Intern for the TAP Program-graduated.

Security

- Established Bi-weekly staff team meetings to discuss inmate progress/issues.
- All staff participated in WICS and WITS Training.
- Provided training in Big Van Certifications.
- Suicide training and PREA updates completed.

Social Services

- Re-entry programming has been added to inmate’s curriculum.
- Inmates continue to participate on victim impact panels for Project Return, Marquette University and Wind Lake.
- St. Rose and the Family Reunification program continue.
- ASHA Family Services, Enhanced Wiser Choice, Milwaukee County Welfare Bureau, Word of Hope continued at the center.

Treatment Alternative Program (TAP)

- Continue to work towards stabilizing the daily TAP program participation numbers.

Work Release

- Work release participation averages 10-15 inmates per month.
- Inmate project crews continue at MSDF.
- Inmate drivers are continually approved and trained.

PROGRAM PARTICIPATION AND COMPLETIONS

Program	Number of Participants	Number of Program Completions
AODA – Harm Reduction/Phoenix	48	44
Treatment Alternative Program (TAP)	21	11

COMMUNITY ADVISORY BOARD

MWCC has joined the Community Advisory Board at Milwaukee Secure Detention Facility which meets quarterly.

RESTORATIVE JUSTICE

- **Crochet group** – Donate various items (blankets, booties, sweaters, etc. for infants) to shelters.
- **Victim Rights Week** – Inmates participated in making posters displayed around the facility.

- **Domestic Violence Week** – General population inmates and TAP Participants made ribbons to be worn by various groups/individuals during the week.

PROGRAMS

Structured AODA programming occurs at the facility from approximately 7:30 AM – 4:30 PM on weekdays. New Freedom curriculum is used for individual goal work and in groups.

A Psycho-Social Assessment and an Individual Treatment Plan are completed on each inmate entering the TAP program.

TAP Group Topics include the following:

- | | |
|--------------------------|-------------------------------------|
| • Cognitive Intervention | • Parenting |
| • Victim Impact | • Life Skills |
| • Relationships | • Drug-Education |
| • Conflict Resolution | • Grief and Loss Relapse Prevention |
| • AODA Education | • Problem Solving |
| • Stress Management | • Goal Setting |

ASHA Services for Women

Group allows for the exchange of ideas and experiences regarding women’s issues to effect a change in their lifestyles.

St. Rose Visiting Program

Family reunification program designed so that children and their mothers maintain contact.

Education

- Tutoring (Inmate volunteer tutors)
- GED/HSED preparation with assistance from Volunteer teacher from the Next Door Foundation.

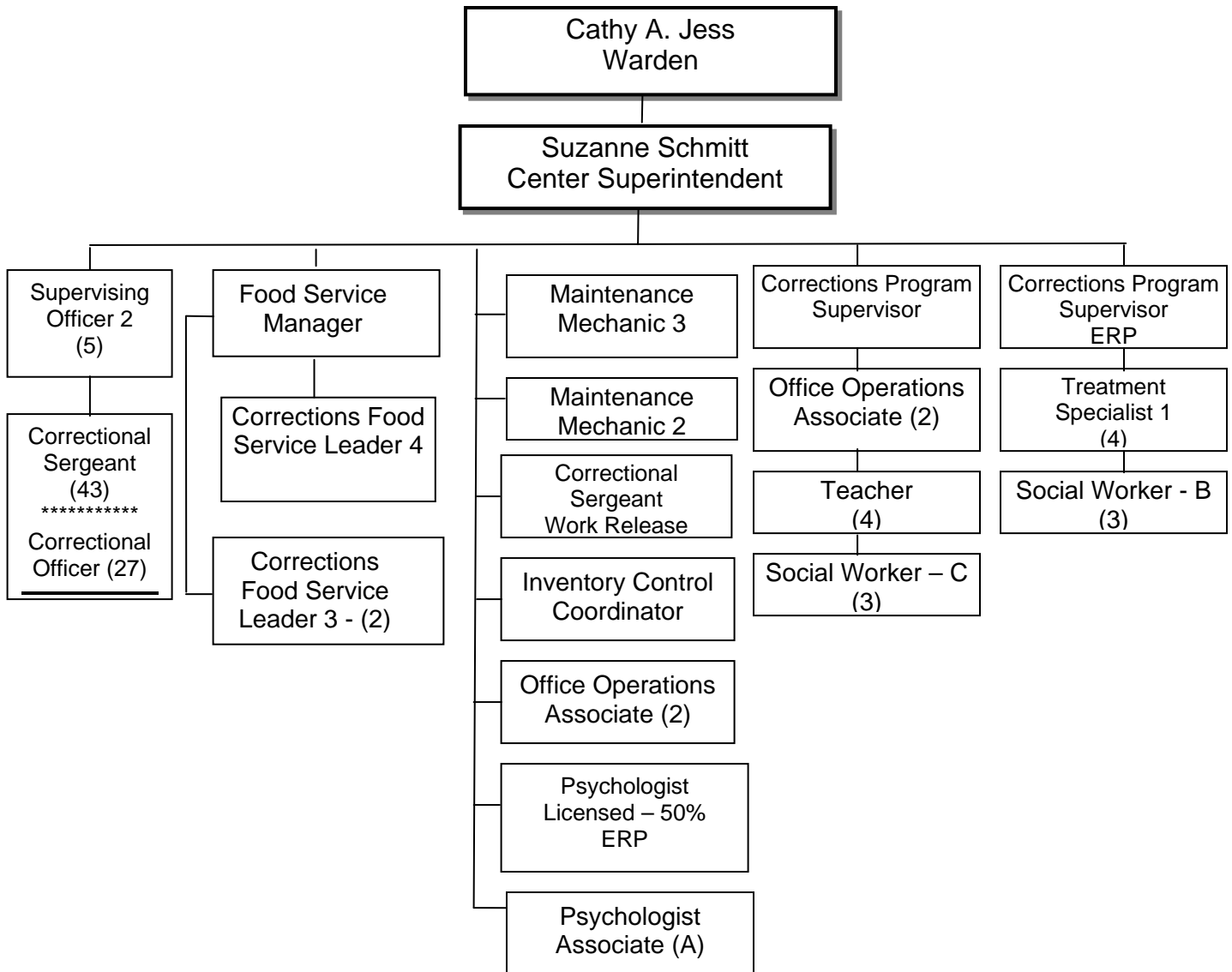
VOLUNTEERS

Parklawn Assembly of God
 Prison Fellowship
 Project Return

St. Marks A.M.E.
 St. Rose
 Word of Hope

Robert E. Ellsworth Correctional Center Organizational Chart FY 09

Union Grove, WI



ROBERT E. ELLSWORTH CORRECTIONAL CENTER

21425-A Spring Street
 Union Grove, WI 53182-9408
 (262) 878-6000

Superintendent Suzanne M. Schmitt



Opened in: 1989
Number of Acres: 27 acres
Center Security Level: Minimum and Minimum-Community Custody

ACCOMPLISHMENTS

Buildings and Grounds

- Outside inmate grounds crew mowed 27+ acres & maintained a large vegetable garden consisting of tomatoes, green peppers, onions, cucumbers, squash and cantaloupe. Inmates learned how to plant, care for and harvest produce. The harvested produce was utilized in food service in preparation of meals. Also continued with inmate project crew job of mowing the SOGS grounds & upkeep of the flower beds.
- Contracted with a tree service to remove dead trees and to trim the existing trees. Several smaller trees removed for line of sight to the recreation fields.
- Contracted to remove asbestos from 3 rooms. Abated the tiles from 4 inmate rooms on NPR-B.
- Replaced main steam valve.
- Waxed all hallway floors project was completed.
- Digital conversion for television was completed.

Health Services Unit

- Women's Health Week
- Weight loss programs
- Unscheduled BP checks on Fridays
- Calorie Counts on menu
- New Literature in HSU
- Sinks and soap dispensers in hall way rooms
- Dental services provided to SOGS
- Staff training is continuous
- HSU partners with Gateway Technical College for nurse interns.

- HSU Computer and scheduling program instituted at TCI improves continuity of care and decreases errors.
- Flu Clinics
- Chronic Care Clinics

Earned Release Program

The Earned Release Program has a group of inmates graduating every 2 months. Between 7/1/08 and 6/30/09, ERP had 4 different completion ceremonies with 50 inmates successfully completing the program. ERP staff includes one Program Supervisor, three Social Workers and four Treatment Specialists, one Office Operations Associate, one Treatment Sergeant along with regular security staff. ERP expects to serve 100 inmates during FY10.

Education Academic

- 42 HSED components completed
 - Averaged 9 Full time and 122 Part time students/month with 2 HSED teachers
 - Averaged 60 vocational students/month with 1 Vocational instructor
 - Averaged 4 IYOP students/month
 - 4 HSED students completed
 - 563 Vocational credits received
 - 2 students enrolled in correspondence courses
 - Supervised and trained inmate tutors
 - Assisted students with the process of transitioning to post secondary education
 - Assisted in re-entry initiative in the following areas:
 - Family Support
 - Personal Development
 - Wellness
 - Education
 - Health
 - Financial Literacy
 - Employability
 - CGIP in GP and ERP
 - Mother Read
 - Parenting
 - Money Smart – Financial Literacy Class
 - WI Institution Literacy Council tutor training
- **Education Support**
 - Teachers provide all support for the library and law library.
 - Teachers schedule and supervise inmates utilizing the computer lab for resumes, cover letters, and job searches.
 - Teachers provide all of our own para-professional support for education:
 - Student scheduling
 - Student payroll
 - Student file maintenance
 - Supply ordering
 - TABE testing and scoring
 - HSED testing coordination
 - New student intake
 - Coordinates classroom and education bathroom cleaning
 - **Institution Support**
 - Teachers contribute to the betterment of the institution through the following:

- Computer staff training
 - EAP
 - Employee Service Program
 - New inmate orientation
 - PRC team member
- **Inmate Enrichment**
In addition to their regular duties the education staff at Ellsworth has undertaken the following special projects:
 - Diversity Circles
 - Started 2007
 - Facilitated by volunteers from UW-Parkside
 - Up to 12 inmates may participate in each 6 week session
 - Within My Reach
 - Started 2007
 - Facilitated by volunteers from the Center for Self Sufficiency
 - Up to 15 inmates may participate in each 4 week session
 - Helps inmates learn how to develop better relationships
 - The Great Escape Book Club
 - Started 2004
 - New books selected approximately every 4 months
 - 5 author visits since its start
 - Approximately 225 inmates, of all reading levels, have participated since its start
 - Issue Awareness Weeks:
Involved in and planned activities for:
 - Domestic Violence Awareness Week
 - Crime Victims' Rights Week
 - Women's Health Week
 - **Community/Organization Involvement**
The teachers are involved in a variety of community and DOC committees. They include:
 - Correctional Education Association WI
 - DOC EDNET Software Committee
 - Ellsworth Community Relations Board
 - Racine Reads
 - WI Institutions Literacy Council

During this fiscal year, education staff coordinated and supervised two large community service projects.

The first project, in recognition of Crime Victims Rights Week, was the creation of 14 quilts for the children at HALO. Quilt squares were decorated with children's themes by inmates from every unit of the center. The quilts were sewn by 5 inmates.

The second project involved inmates creating and sewing 420 conference bags for the Correctional Education Association International Conference.

We have also formed partnerships with the following organizations:

- AAUW
- Barnes & Noble Booksellers
- Center for Self Sufficiency
- Children's Hospital of WI
- Correctional Education Association
- HALO
- UW-Extension
- UW-Parkside
- Volunteer Center of Racine
- Word of Hope Ministries

- **Donations/Community Service**

Inmates, with coordination from education staff, have donated the following items to the community:

- Crocheted blankets and other items
- Artwork
- Activity books
- Time spent wrapping gifts
- Adopt a Highway

Employee Services Program (ESP)

The REECC ESP Committee involves various staff from security and non-security to sponsor events for staff participation throughout the year. Since the inception of this committee, several events have been sponsored:

- Chili contest for all staff in February 2009
- "Eating of the Green" potluck for all staff March 2009
- Gifts and donation drive for a staff member's new triplets April 2009
- Assisted in organizing and committee members available for the Health Fair for staff and inmates in May 2009
- Cinco de Mayo potluck for all staff May 2009
- Hosted barbeque for Employee recognition week May 2009
- Juneteenth celebration barbeque for staff June 2009
- Identified staff Peer Supporters and sent them to training for employee assistance for staff involved in significant or traumatic incidents and personal issues. Staff referrals are made to the contract vendor, Deer Oaks.

Food Service

This department serves meals to the Southern Oaks Girls School (SOGS) and at REECC. In 2008 through June 2009, 91,958 meals were served at SOGS and 368,286 meals were served at REECC at an average cost of \$.91 per meal.

Mental Health

- Chair of the Multi-Disciplinary Team meetings
- Pre-Release re-entry group sessions

Security

- Provided training to all staff on Principles of Subject Control, Incapacitating Agents, CPR/AED, WICS, Conduct Report Writing and Report Writing.
- Provided training to staff on Professionalism and Ethics.
- Provided training to all staff on Suicide Prevention, Blood borne Pathogens and cell entry.
- Attended training on PREA, Security Threat Groups, Incident Command System and
- Attended PREA Investigator Interview training.
- Upgraded the cell entry uniforms with purchases to replace jump suits with Battle Dress Uniforms.
- Provided tours and education on REECC to college student criminal justice classes and the Gateway Senior learner's class.
- Provided tours to nursing students from Concordia University.

- Conducted several Volunteer Orientation Training sessions.
- Upgraded camera and additional wiring for new cameras. Monitors in Control Center replaced.
- Radio re-banding project took place.
- Radio upgrade and replacement took place. In line for new site lens program.
- Replaced OC dispersment system from Fogger to streamer and added Mark III canisters to Supervisors duty belts.
- Purchased additional equipment to supply the headquartered staff upon arrival.
- Placed a conduct report hearing room on NPRA 2nd Floor.
- Inmate orientation has been updated to include a PREA DVD presentation, also including HSU presenting information.

PROGRAM PARTICIPATION AND COMPLETIONS

Program	Number of Participants	Number of Program Completions
Anger Management	31	26
CGIP (GP & ERP)	55	22
Parenting (GP + ERP)	55	36
Earned Release Program (ERP)	91	50
ATR Program "A Look Inside"	31	30

COMMUNITY ADVISORY BOARD

Racine County Combined Community Corrections Relations Board includes Racine Correctional Institution, Racine Youthful Offender Center, Robert E. Ellsworth Correctional Center, Southern Oaks Correctional Center, Racine County District Attorney Office, Racine County Public Defenders Office, Division of Community Corrections – Region 2, elected state and local officials, local law enforcement agencies and other community agencies that have an interest in the correctional inmate. The combined board members are submitted by RCI.

TREATMENT PROGRAMS

Earned Release Program (ERP)

- The Earned Release Program addresses the needs of female inmates who require AODA treatment and who qualify for early release. This court initiated, voluntary, 6-month, gender-specific program promotes victim awareness and community service as well as AODA education, treatment and relapse prevention. The Earned Release Program works in cooperation with probation and parole to actuate successful community reintegration following completion of the intensive treatment program. The ERP program offers support groups in the area of:
 - AA
 - Al-Anon
 - SMART
 - CA
 - NA

ERP Treatment Program Components

A. Assessments

- Psycho-Social Assessment
- Individual Treatment Plan

B. Treatment Components

- AODA Education
- AODA Relapse Planning
- Beyond Trauma
- Cognitive Interventions
- Community Reintegration
- Conflict Resolution
- HSED & Vocational
- Life Skills
- Organizational Skills
- Parenting
- Problem Solving
- Release Planning
- Victim Impact
- Relationships (Domestic Violence, Healthy Relationships, Boundaries)

"A Look Inside"

“A Look Inside” is a 90 day ATR program that uses a multi-faceted approach to help participants gain insight into one's own destructive behaviors and promote positive life skill void of criminal activity.

Parenting

The classes cover child development from prenatal to teens and beyond.

Cognitive Interventions Program – CGIP

CGIP is based on Cognitive Behavioral Theory and is offered in group format to inmates. Participants are encouraged to identify and evaluate belief patterns, thought patterns, and behavioral patterns.

Anger Management

Anger management is a group that addresses the causes and types of anger and encourages socially appropriate responses to anger and other related emotions.

Standardized Pre-Release Programming

In accordance with the Department of Corrections’ initiative to offer a standardized pre-release curriculum to inmates to assist in facilitating their transition to the community, teachers, PSU staff, and Social Workers provide the following ten modules on an on-going basis:

- Wellness
- Health
- Personal Development
- Family Support
- Education
- Employment
- Financial Literacy
- Housing
- Transportation
- Transitional Prep

EDUCATIONAL PROGRAMS

GED/HSED

Classes are offered to students who read above the sixth grade level as measured by the Test of Adult Basic Education (TABE). Students prepare to take the tests needed to obtain their High School Equivalency Diploma (HSED).

Adult Basic Education – ABE

ABE support services are offered to students who read below the sixth grade level as measured by the Test of Adult Basic Education (TABE).

Office Software Program – Certificate program through Gateway Technical College

This certificate program provides training in the Microsoft Office Software programs.

Incarcerated Youth Offender Program - IYOP

Incarcerated individuals, under the age of 35 and having a HSED or High School Diploma, can enroll in courses through Milwaukee Area Technical College working towards a comprehensive Associate of Arts degree.

College Correspondence

Correspondence classes may be approved for any inmates with a High School Diploma or HSED and the ability to pay for their coursework.

Wisconsin Institutions Literacy Council – WILC

Inmates with a HSED/HS Diploma, 9th grade reading and math TABE scores, and good institution behavior can be trained to become tutors; One on one tutors are available for classroom or individual use to all inmates.

The Great Escape Book Club

The Great Escape Book Club is an open-ended group that promotes literacy. The group reads the same book and participates in discussion, and projects based on the book. There is communication made with the authors so they can provide feedback, and sometimes visit the institution.

Racine Reads

Robert E .Ellsworth Correctional Center partners with The Racine Public Library to be a part of a community wide reading effort. The mission of Racine Reads is for the community to read the same book at the same time, and have meaningful dialogue about the book. Inmates at Ellsworth read the book and participate in discussion groups and projects.

Diversity Circles

Diversity Circles are small groups of people talking together about an important public issue. They meet together over a period of six weeks to look at an issue from many points of view. No one leads Diversity Circles, but facilitators keep the discussion focused. This group is led by volunteers from the University of Wisconsin-Parkside.

Re-Entry Initiatives

- Re-Entry Initiatives provide direct services for the development of pre-release risk and needs assessments, individualized transition plans, pre-release treatment, as well as post-release core services in the areas of education, employment training and placement, AODA treatment, housing, health & wellness, financial literacy, transportation, personal development and family and other social supports. REECC continues ongoing training and services in this area.
- Pilot of a DVR program was initiated on 04/01/09 at the Center. The Department of Corrections and the Division of Rehabilitation (DVR) entered into an agreement designed to facilitate improved employment outcomes of person released from correctional facilities to their home communities. The intent of the project is to promote the early identification of incarcerated individuals with disabilities and to prepare those inmates for successful employment upon reentry to their community by offering both DOC and DVR vocation programs and services. From April to June 2009, 29 inmates with less than a year to release were referred to DVR for their services.

COMMUNITY SERVICE/RESTORATIVE JUSTICE

Helping Hands:

Helping Hands offers the inmates an opportunity to give back to the community. Children, with extended-stay patients or day-patient status, receive activity booklets and craft project packets created by these inmates. In addition to the packets and booklets, many of the inmates have sewn teddy bears and fleece blankets for the children. The teddy bears are given mainly to traumatized children.

Victims' Garden

This year a group of inmates designed and continued the development of the victims' garden located in the front of the center. Currently, there are four sections dedicated to various victim groups. Along the sidewalk- entrance is purple for domestic violence. The center of the garden area contains a pink ribbon for breast cancer victims and children's garden area in recognition for the children that are victims of their mothers' crimes. The last garden is for nature, which is a victim from many sources.

Motheread, Inc

Motheread offers literacy development from a parent involvement perspective. The instructional approach empowers parents and helps them become literacy role models for their children. The curriculum teaches parents, using a support group structure, how language skills can offer a new way to look at their own personal development while improving communication within their families. This program uses adult and children's literature to teach reading, writing, speaking, and listening skills.

WIGBAC Program

Inmates crochet items like blankets, sweaters, etc. for charity, nursing homes, hospitals, churches, schools, and other charitable events upon request.

Adopt a Highway Program

Inmates pick up litter along highways to maintain the environment.

RESTORATIVE JUSTICE

- Restitution Collected - \$23,129.61
- Child Support - \$27,102.92
- Victim/Witness and DNA Surcharge - \$17,259.03
- Room, Board and Transportation collected - \$232,894.89
- Community services projects included:
 - Book Project
 - Locks of Love donations
 - 150+ hat/mitten sets
- **Donations/Community Service**
 Inmates, with coordination from education staff, have donated the following items to the community:
 - Crocheted blankets and other items
 - Artwork
 - Activity books
 - Time spent wrapping gifts
 - Adopt a Highway

VOLUNTEERS

Alcoholics Anonymous	Hope Prison Ministries
Broken Wings Network	Jehovah's Witnesses
Catholic Archdiocese of Milwaukee	Joy Ministries
Center for Self Sufficiency	Morningstar Productions
Christian Faith Fellowship	Narcotics Anonymous
Education tutors: 3 community Tutors	Oasis Prison Ministries
Elim Tabernacle	Project Return
Gamblers Anonymous	Re-Entry Presentation
Girl Scouts	St. Rose
Gospel Lighthouse	Survivors of Abuse
Halal Open Heaven	Visible Means
Heart of Worship	Women and Children's Horizons

WORK RELEASE PROGRAM

Inmates who attain the minimum community custody security level are eligible for work release. The purpose of the work release program is to reintegrate inmates back into the community while teaching them job skills, work ethics and supplying them with the financial support they will need to succeed. In the past year, an average number of 56 inmates were on daily work release placement in the community, a decrease of 20% from 2008. In comparison to 2008, the wages earned decreased by 23%.

The Center also provided inmate work crews for a number of governmental agencies including the Federal Southern Wisconsin Veteran's Center, Southern Oaks Girls School and Racine Youthful Offender Center for FY 2009. On an average, 10 – 15 inmates were on the work crews.