

**KETTLE MORRAINE  
CORRECTIONAL  
INSTITUTION**

**DEPARTMENT OF  
CORRECTIONS**

**DIVISION OF ADULT  
INSTITUTIONS**



**FY 2006 ANNUAL  
REPORT**

**Larry L. Jenkins  
Warden**

# Message from the Warden

KMCI experienced many accomplishments in Fiscal Year 2006. Budget constraints continued to be a concern, but did not impact our ability to move new initiatives forward and provide services in an exemplary fashion.

Reintegration efforts are a main focus of the Department. KMCI is on the forefront of this effort with the establishment of the first Reintegration Unit and the installation of the first JobNet terminals in a correctional institution. We continue to enhance the process that will increase successful re-entry into the community.

Training days have emerged as a way to relay important information to staff in an interactive setting. It is this type of knowledge sharing that will be beneficial to all. The departments' transition to the Incident Management System (IMS) allows us the flexibility to handle emergency and non-emergency events.

At the Department level, transformation efforts continue. Management Councils have been developed to examine various aspects of our core functions. The Management Councils play a vital role with the changing way we do business, allowing us to be more efficient as an organization.

The Integrated Corrections System (ICS) project continues to move forward. When complete, ICS will enhance the management of offenders by implementing a system that shares data and makes offender information available to all authorized users.

Many KMCI staff members have provided their expertise and invested countless hours into the initiatives described above. Their dedication has been vital to the mission of the Department.

I am very proud of the KMCI staff and their diligence when facing challenges. KMCI staff has my deep appreciation for contributing to a successful FY2006.

Larry L. Jenkins  
Warden

# TABLE OF CONTENTS

INSTITUTION PROFILE	1
KMCI ORGANIZATIONAL CHART	2
HUMAN RESOURCES	
Staff Numbers	3
Retirements	3
Community Relations Board	4
Critical Incident Stress Debriefing	4
Affirmative Action Committee	5
Employee Relations	5
Employee Assistance Program	5
Health and Safety Committee	5
Americans with Disabilities Act Coordinators	5
RECORDS OFFICE	
Staff	6
Nature of Offense	6
Records Office Statistics	6
Population Breakdown by Race	6
Average Monthly Population	7
KMCI Inmate Movement FY2005	7
Monthly Transfers Into and Out of KMCI FY2006	7
BUSINESS OFFICE	
Fiscal Year Expenses	8
Canteen Sales	8
Money Collected From Inmates	8
FOOD SERVICE	9
PSYCHOLOGICAL SERVICES	10
PROGRAM REVIEW COMMITTEE	11
HEALTH SERVICES UNIT	12
INMATE COMPLAINT REVIEW SYSTEM	13
TREATMENT	
Staff	14
Chapel	14
AODA Programs – NEXUS & STOP	15
Treatment/Self-Help Groups	16-18
EDUCATION	
Staff	19
Students	19
Additional Education Programs	19
Vocational Programs	20

Crochet Programs	20
Computer Courses	20
Library	21
Recreation	21
Hobbies	21
Inmate Job Fair	21
MAINTENANCE	
Staff	22
Work Orders	22
Major Projects Completed during FY2006	23
Institution Recycling	24
Community Service Projects	24-25
Laundry/Tailor Shop	25
Vermicomposting	26
SECURITY	
Staff	27
Security Devices	27
Inmate Property	27
Inmate Visits	27
Conduct Reports	28
KMCI Trip Summary	28
Investigations	29
Staff Training	30
BADGER STATE INDUSTRIES	31
LIST OF ACRONYMS	32

# **INSTITUTION PROFILE**

## **KETTLE MORAINÉ**

### **CORRECTIONAL INSTITUTION**

**W9071 FOREST DRIVE**

**P.O. Box 31**

**Plymouth, WI 53073-0031**

*PHONE: 920-526-3244*

*FAX: 920-526-3989*

*DATE OPENED: 1962*

*SECURITY: MEDIUM*

*OPERATING CAPACITY: 783*

*SIZE: 80 acres*

*OFFICER/SERGEANT STAFF: 223*

*CURRENT POPULATION: 1191*

*NON-OFFICER/SERGEANT STAFF: 110*

*INMATE TO STAFF RATIO 3.58 to 1*

#### **INMATE PROGRAMS-----**

##### **INDUSTRIES**

**Badger State Enterprises**

##### **VOCATIONAL**

**Auto Detailing**

**Masonry**

**Custodial Skills**

**Office Software**

**Welding**

**Cabinet Making**

##### **ACADEMIC**

**Adult Basic Education**

**Computer Learning Center**

**Language Arts Lab**

**Special Education**

**Parenting, Social Studies**

**Living Skills, Careers**

**Health Human Sexuality**

**Corrections Learning Network**

**High School Equivalency Diploma**

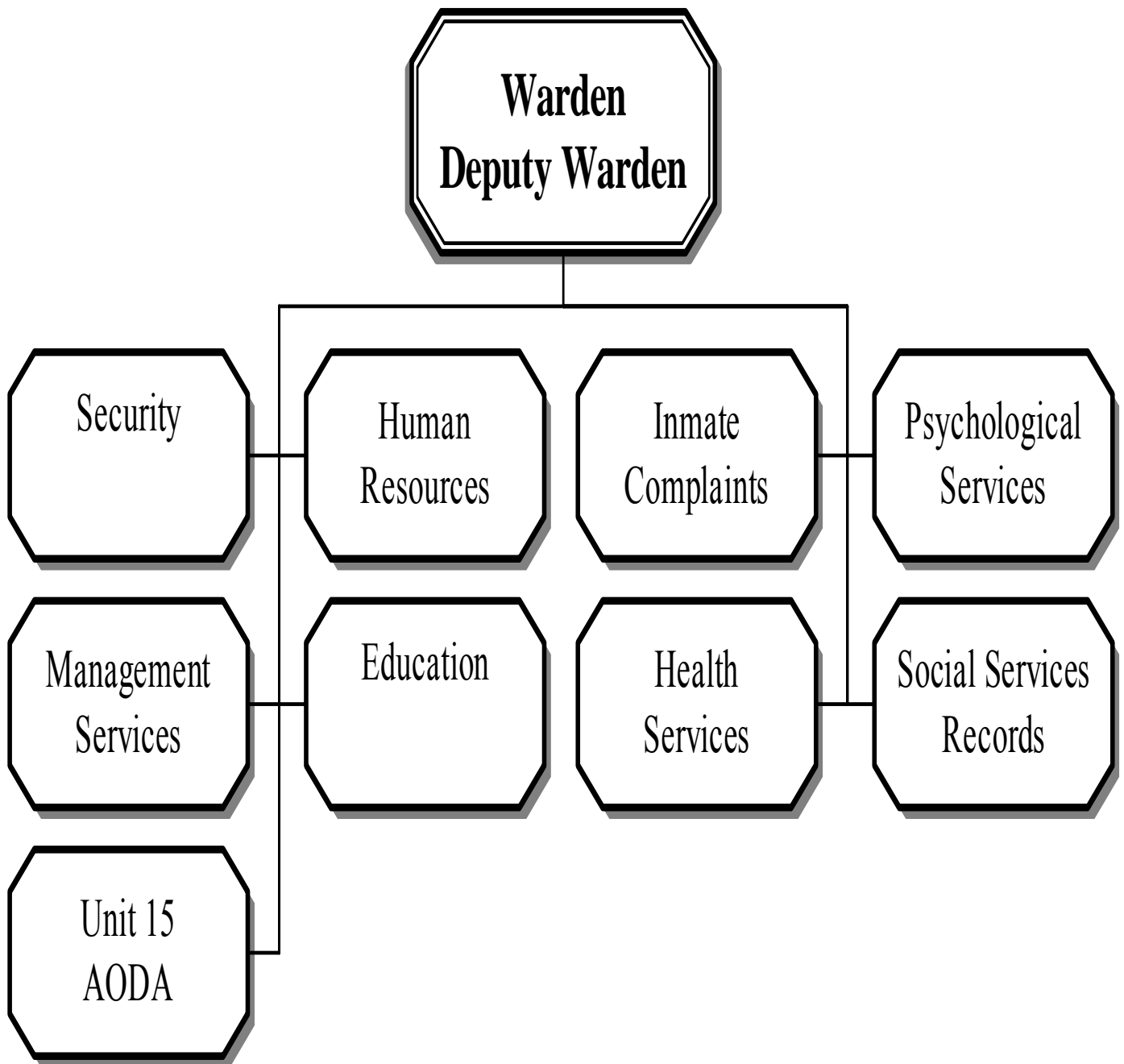
**Correspondence Courses**

**For the Love of Reading Relationships**

#### **INSTITUTION MISSION STATEMENT**

To ensure public/staff safety, keep inmates in medium custody until such time as they are properly released or transferred; provide for the custodial needs of inmates; motivate inmates to learn and develop skills which will prepare them to adjust to the community; and work cooperatively within the institution and with the Department and the public and to ensure that health care is provided to inmates/youths at the institution consistent with professional, community, and correctional health care standards.

# Kettle Moraine Correctional Institution General Organizational Chart FY 2006



# HUMAN RESOURCES

DEPARTMENT	FULL-TIME	PART-TIME
OFFICE OF WARDEN	5	0
HUMAN RESOURCES	3	0
BUSINESS OFFICE	6	1
STORE	4	0
FOOD SERVICE	10	0
BUILDINGS/GROUNDS	15	0
SOCIAL SERVICES	22	0
PSYCHOLOGICAL	4	1
RECORDS OFFICE	4	0
CHAPLAINS	1	1
EDUCATION	23	0
LIBRARY/RECREATION	4	1
SECURITY	223	0
HEALTH SERVICES UNIT	8	4
<b>TOTAL</b>	<b>333</b>	<b>8</b>

**INMATE TO STAFF RATIO: 3.58 to 1**  
**INMATE TO OFFICER RATIO: 5.3 to 1**

## KMCI RETIREMENTS FY2006

Phil Adomavich	Correctional Officer	25 yrs
Dan Barta	Teacher	9 yrs.
Nick Bjornstad	Electrician	26 yrs.
Frank Bond	Teacher	30 yrs
Bob Dawson	Psychological Services Associate	25 yrs.
Ann Koepke	Human Resource Assistant	27 yrs
Patricia Ringwell	Correctional Sergeant	20 yrs
Dean Woodley	Correctional Officer	28 yrs

# HUMAN RESOURCES

## COMMUNITY RELATIONS BOARD

The board meets annually to provide information and discuss issues surrounding corrections and the community. The meeting is an attempt to enhance understanding, cooperation, and provide services to the community.

### **FY2006 COMMUNITY RELATIONS BOARD – KMCI STAFF**

Larry Jenkins	Richard Breister	Renee Chyba	Mike Dittmann
Rosie Eickhoff	Sue Ewerdt-Joseph	Mary Martin	Barb Taddey
William McCreedy	Michael Meisner	Jim Salter	Tim Lundquist
Mary Jo Nelson	Michael O'Connor	David Picard	Fred Waddell
Dave Tarr			

### **FY2006 COMMUNITY RELATIONS BOARD – COMMUNITY MEMBERS**

Joseph Leibham-Wisconsin Senate	Mike Helmke-Sheboygan Cnty. Sheriff
Earl Luth-Town of Greenbush	Randy Karoses-Campbellsport PD
John Phillips-Moraine Park Tech. College	Ginger Weimer-Salvation Army
Kevin Keough-Probation/Parole, Sheboygan	Mike Limberg-Town of Greenbush
Dione Knop-Victim/Witness Service Sheboygan	Carole Marchant-Ferber-Campbellsport PD
Ann Marie Wixom-Literacy Council, Sheboygan	Penny Werner-Victim/Witness Service FDL
Dave Pichette-State Patrol-District 3	Jack Lewis-Literacy Council, Sheboygan
Rep. Steve Kestell-Elkhart Lake Representative	Sara Filemyr-Literacy Council, Sheboygan
Joe DeCecco-Sheboygan County. DA	Dan Klahn-Town of Greenbush Supervisor
Mary Ann Bashaw-Sheboygan Mem. Med. Center Corrections, Sheboygan	Kevin Mueller-Comm.
JoEllen Wichman-Salvation Army	Dorothy Garcia-St. Agnes Hospital
Karen Kielrosser-St. Agnes Hospital	

## EMPLOYEE PROGRAMS

### CRITICAL INCIDENT STRESS DEBRIEFING (CISD)

CISD is a peer support program. This program is designed to ensure that staff involved in potentially traumatic incidents will receive the support and services necessary to cope with the stress of the incident and make a successful recovery. A number of DOC staff has been trained to provide peer support. Peer Supporters are the first point of contact for a potentially critical incident, assist in debriefings and are available for follow-up support.

#### **PEER SUPPORTERS:**

Dave Picard, Coordinator	Ron Erdmier	Michael Huck
Donald Faul	Marty Iverson	Marge Guell
David Pagel	James Olson	Debra Palm
Hayley Pucker	Bob Tolsma	

# **HUMAN RESOURCES**

## **AFFIRMATIVE ACTION COMMITTEE**

KMCI dedicates itself to the maximum utilization of its human resources. The Affirmative Action Committee seeks to ensure equal employment opportunity for all persons regardless of race, creed, color, sex, national origin or ancestry, age, religion, disability, sexual orientation, marital status, political affiliation or membership in any component of the military forces of the United States or this state.

### **MEMBERS OF THE KMCI AFFIRMATIVE ACTION COMMITTEE:**

Mary Jo Nelson

Terry Wojahn

Hayley Pucker

Mel Free

Jerry Hauke

## **EMPLOYMENT RELATIONS**

Union/Management meetings are scheduled monthly and as needed. The following labor organizations represent staff at KMCI:

- Wisconsin State Employees Union (WSEU)
- Wisconsin Education Association Council (WEAC)
- United Professionals for Quality Health Care (UPQHC)
- Wisconsin Professional Employees Council (WPEC)
- Wisconsin State Building and Trades Council (WSBTC)

## **EMPLOYEE ASSISTANCE PROGRAM (EAP)**

The EAP is a voluntary program staffed by peer coordinators. EAP provides referral services to employees and family members dealing with personal, work-related, behavioral or medical problems. All EAP contacts are CONFIDENTIAL.

### **EAP Coordinators are:**

Mel Free

Dick Taddey

Greg Teichmiller

Jane Boyle

Jeff Kleine

John Bollig

Charlotte Uhazie

Marilyn Buslaff

Jan Guse

Randy Fiedler

Michael Huck

## **HEALTH AND SAFETY COMMITTEE**

KMCI's Health and Safety Committee conducts regular inspections of work areas to ensure health and safety in the work place. The goals of the Health and Safety program are education, training, and prevention.

### **Committee Members are:**

Michael O'Connor, Co-chair

Mary Jo Nelson, Co-chair

Royce Edwards

Francis Bond

Ann Koepke

Margaret Hau

Carl Clark

Richard Breister

Mary Jo Schmitt

## **AMERICANS WITH DISABILITIES ACT COORDINATORS**

James Salter 920-526-9214

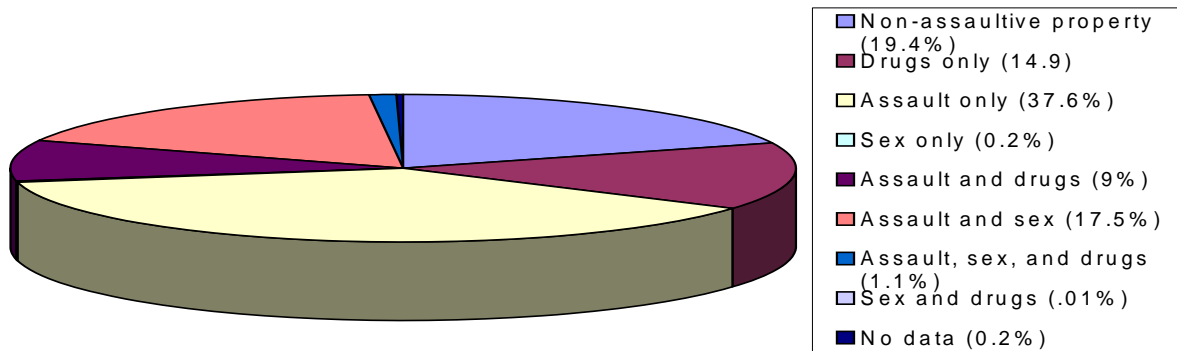
Sue Ewerdt-Joseph 920-526-9216

# RECORDS OFFICE

## STAFF

The Records Office has one full-time Offender Records Supervisor, two full-time Offender Records Assistant 1's, one full-time Offender Records Assistant 3 and one Office Operations Associate (half-time Records/half-time PSU).

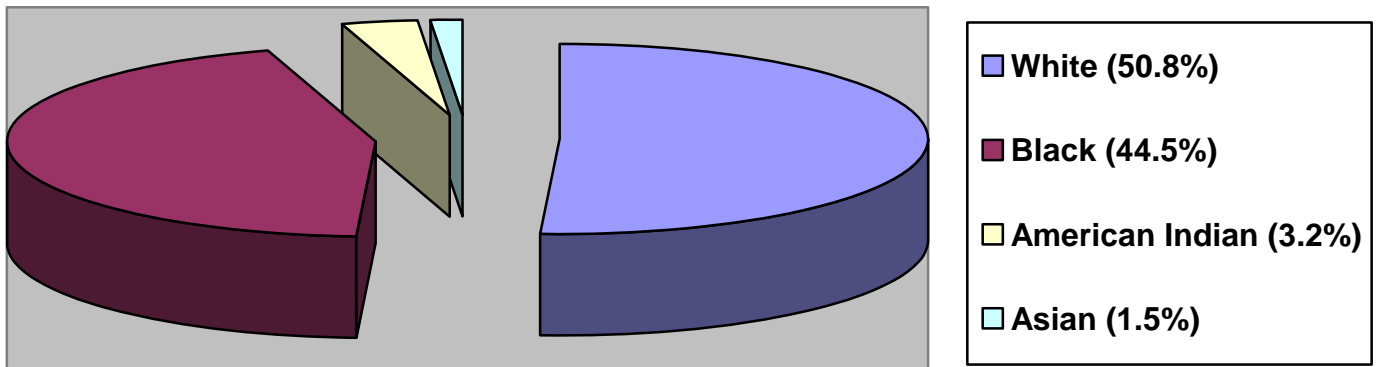
## NATURE OF OFFENSE



## RECORDS OFFICE STATISTICS

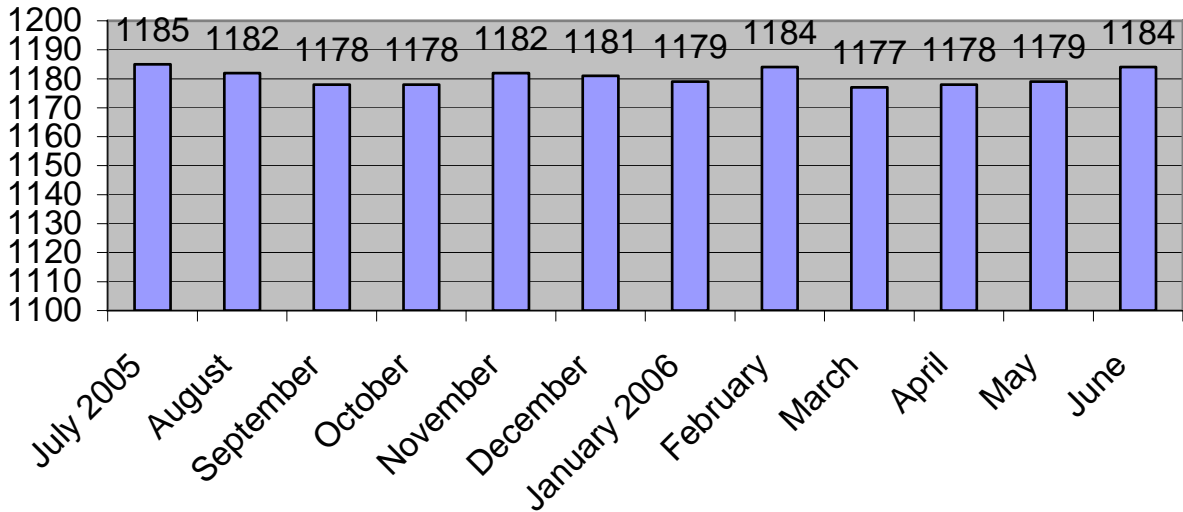
Average Inmate AGE at KMCI	32.85 years
Average STAY at KMCI	11.74 months
Average DAILY POPULATION at KMCI	1181 inmates
Rated Capacity as of 12-31-01	783 inmates

## POPULATION BREAKDOWN BY RACE



# RECORDS OFFICE

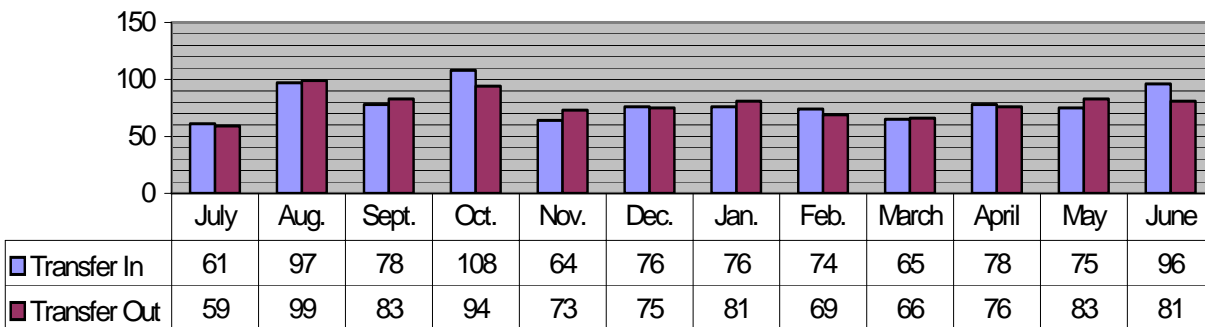
## AVERAGE MONTHLY POPULATION



## KMCI INMATE MOVEMENT FY2006

Transfers to Minimum	285
Transfers to Medium or Maximum	238
Paroles	24
Mandatory/Extended Supervision Releases	368
Maximum Discharge	20
Court Ordered/Sentence Modification	2
ATR/Other (no revocation)/DIS	2
Bond	0
Death	0
<b>TOTAL</b>	<b>939</b>

## MONTHLY TRANSFERS INTO AND OUT OF KMCI



# BUSINESS OFFICE

The Business Office at KMCI is staffed with 5 full-time positions and one part-time position. The Business Office monitors all institution purchases, including payment for purchases. This office is also responsible for all inmate account transactions as well as the institution budget shown below.

<b><i>FISCAL YEAR 2006</i></b>	
<b><i>July 1, 2005 to June 30, 2006</i></b>	
TOTAL SALARY BUDGET	\$22,180,115.00
SUPPLIES & SERVICE	1,383,631
FOOD	1,215,182.00
REPAIR & MAINTENANCE	243,783.00
FUEL & UTILITIES	826,356.00
TITLE 1 SPECIAL ED. EXPENSES	51,217.00
PHONE REVENUE EXPENSES	75,553.00
INST. ENTERPRISES	42,746.00
PURCHASE OF SERVICES (FOR INMATES)	9,376.00
<b>TOTAL</b>	<b>\$26,063,959.00</b>

Fiscal Year 2006 Canteen Sales			
Month	Inmates	# of Sales	Total Sales
July '05	1187	2951	\$40,228.95
August	1192	3303	59,127.64
September	1181	3042	48,754.96
October	1184	2886	59,887.68
November	1185	3323	50,942.01
December	1180	2573	59,954.24
January '06	1188	3135	59,432.13
February	1191	3106	56,625.75
March	1181	3657	56,738.56
April	1183	3069	53,473.75
May	1189	3346	66,883.33
June	1191	3127	54,406.71
Totals	14,232	35,518	\$666,455.71

## **MONEY COLLECTED FROM INMATES**

VICTIM WITNESS SURCHARGE (VWS/VWS-B)	\$39,181.40
DEOXYRIBONUCLEIC ACID (DNA)	\$33,392.26
MEDICAL CO-PAYS	\$7,020.00
CHILD SUPPORT	\$25,612.07
COURT OBLIGATIONS & RESTITUTION	\$13,270.37

# **FOOD SERVICE**

## **MEGA MEALS**

- KMCI Food Service served 1,361,057 meals in fiscal 2006.
- Average Cost = \$0.93 cents per man per meal.
- KMCI Averaged 85 ongoing special diets due to religious or medical requirements.

## **LOOKING BACK AT Fiscal 2006**

From July 1, 2005 to June 30, 2006

FOOD SERVICE USED:

4,145 pounds of SUGAR per month

3,883 pounds of POTATOES per month

1,883 pounds of GROUND HAMBURGER per month

1,816 pounds of GROUND TURKEY per month

3,701 loaves of BREAD per month

2,205 dozen EGGS per month

2,292 pounds of BUTTER per month

## **STAFF & INMATES**

- Food Service Department has a full-time staff of 10 employees.
- An average of 69 inmates work in Food Service.
- Inmates learn and increase job skills which makes them more employable and self-sufficient upon release.
- AVERAGE inmate pay in Food Service = \$0.26 per hour.
- Every Food Service employee is certified through the State of Wisconsin, in Sanitation and Safety.

# PSYCHOLOGICAL SERVICES

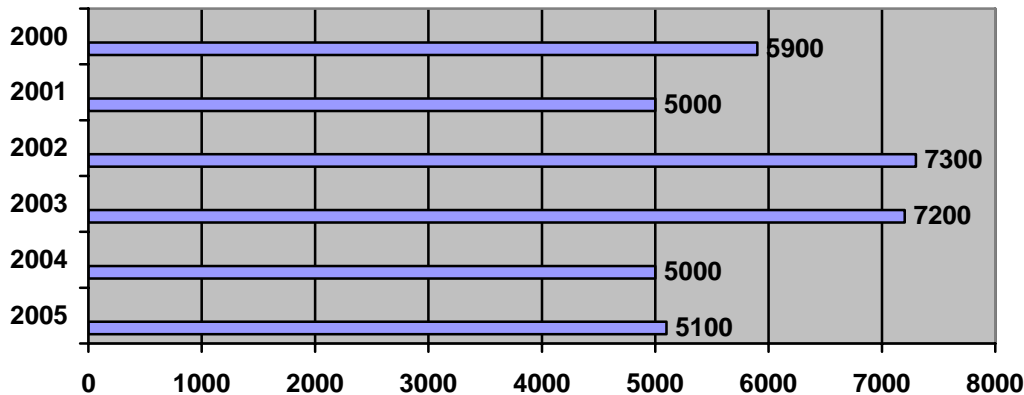
## STAFF

- 1 Full-time Psychologist Supervisor
- 2 Full-time Psychological Associates
- 1.5 Full-time Psychologists

## DUTIES

Psychological Services evaluates and provides treatment for the mental health needs of inmates, consults with other departments and institutions and oversees Sex Offender Treatment.

## INMATE CONTACTS



## PSYCHOLOGICAL CONTACTS INCLUDE

- INDIVIDUAL THERAPY
- CRISIS INTERVENTION
- SITUATIONAL STRESS
- CLINICAL MONITORING
- OVERSIGHT SEX OFFENDER TREATMENT (S.O.T.) PROGRAMS
- PSYCHOLOGICAL TESTING
- CLINICAL SCREENING FOR WISCONSIN SECURE
- PROGRAM FACILITY PLACEMENT
- EVALUATIONS FOR MINIMUM CUSTODY PLACEMENT

# PROGRAM REVIEW COMMITTEE

## STAFF

The Classification Review Office at KMCI is under the direction of the Division of Adult Institutions, Bureau of Offender Classification and Movement (BOCM).

The Classification Office consists of one full-time Classification Specialists and one full-time Operations Program Associate. The Program Review Committee can consist of up to 4 members including:

**CLASSIFICATION SPECIALIST  
TREATMENT REPRESENTATIVE  
EDUCATION DEPARTMENT REPRESENTATIVE  
SECURITY SUPERVISOR**

## DUTIES

The Classification Specialist chairs the Program Review Committee (PRC) which meets weekly to review, assess, and document each inmate's program needs and progress, custody level and placement. The purpose of PRC is to determine the appropriate placement of an inmate in order to regulate the supervision and movement of inmates among institutions, and between institutions as well as community programs. The Classification Specialist provides backup coverage for other institutions as needed.

The Program Review Committee determines and assigns each inmate's:

- ◆ Security classification
- ◆ Priority for program placement
- ◆ Institution placement/transfer
- ◆ Earned Release and Challenge Incarceration Eligibility
- ◆ Placement for Re-integration purposes

<b>FY2006 INMATE REVIEWS BY PRC</b>	
Scheduled/early reviews	986
Waivers	396
Segregation reviews	129
Program change reviews	33
<b>Total:</b>	<b>1544</b>

# HEALTH SERVICES UNIT

## (H.S.U.)

### STAFF

- |                                         |                                 |
|-----------------------------------------|---------------------------------|
| (1) Health Services Manager             | (5) Full-time Registered Nurses |
| (3) Part-time Registered Nurses         | (2) Part-time Doctor            |
| (1) Part-time Family Nurse Practitioner | (1) Dentist                     |
| (1) Part-time Dental Hygienist          | (1) Dental Assistant            |
| (1) Medical Program Assistant Associate |                                 |

### DUTIES

Dental services, routine medical care, laboratory and radiology services are provided by HSU. Emergency and specialty medical, dental, eye examinations and diagnostic treatment are done OFF SITE at local hospitals and clinics or at the University of Wisconsin – Hospital (UWH).

### FISCAL 2006 STATISTICS

OFF SITE APPOINTMENTS: (University of Wisconsin – Hospital)	583
OFF SITE APPOINTMENTS: (Other than U.W.H.)	288
OFF SITE ADMISSIONS: (University of Wisconsin – Hospital)	12
OFF SITE ADMISSIONS: (Other than U.W.H.)	14
DENTAL APPOINTMENTS	1,640
HYGIENTIST APPOINTMENTS	320
OFF SITE DENTAL APPOINTMENTS	9
TOTAL DENTAL APPOINTMENTS	1,969
<b>TOTAL H.S.U. CONTACTS FOR FY2006</b>	<b>122,860</b>
VISITS – VALLEY VIEW EMERGENCY ROOM	129
VISITS – U.W. – HOSPITAL EMERGENCY ROOM	1
DEATHS	0

# INMATE COMPLAINT REVIEW SYSTEM (I.C.R.S.)

The purpose of the ICRS is to encourage communication between staff and inmates; explain policies; allow inmates to raise questions in an orderly fashion; to reduce the number of lawsuits; and to assess institution climate.

## TOTAL COMPLAINTS

<u>2002</u>	<u>FY2004</u>	<u>FY2005</u>	<u>FY2006</u>
3126	3202	3171	2600

## COMPLAINT RESULTS FY2006

COMPLAINTS AFFIRMED	97
COMPLAINTS AFFIRMED W/MODIFICATION	74
COMPLAINTS DISMISSED	1637
COMPLAINTS DISMISSED W/MODIFICATION	241
COMPLAINTS REJECTED	551

## COMPLAINTS BY CATAGORY FY2006

<b>CATAGORY</b>	<b>2002</b>	<b>FY2004</b>	<b>FY2005</b>	<b>FY2006</b>
01 STAFF	962	972	922	665
02 CORRESPONDENCE	84	99	71	121
03 DISCIPLINE	294	244	266	217
04 MEDICAL	323	288	257	165
05 PAROLE	22	4	5	4
06 PERSONAL PHYSICAL CONDITIONS	149	191	214	159
07 PROPERTY	610	569	590	606
08 RULES	107	176	209	156
09 RELIGION	24	16	19	20
10 WORK/SCHOOL	60	92	131	77
11 VISITS	45	32	59	58
12 OTHER	234	331	188	165
13 FOOD	46	77	120	65
14 CLASSIFICATION	35	16	25	32
15 INMATE COMPLAINT REVIEW SYSTEM	1	2	13	5
16 DISCRIMINATION	6	1	4	2
17 PAY RATE/ACCOUNTS	122	90	78	74
18 BADGER STATE ENTERPRISES	2	2	0	8
19 BREACH OF CONFIDENTIAL HEALTH INFO				1

# TREATMENT

## STAFF

Primary responsibilities of treatment staff are provision of inmate services and programming, assessment and evaluation of treatment and security needs, monitoring of inmate case plans, preparation of inmate community reintegration and coordination of services with internal and external staff.

STAFF	AMOUNT
Corrections Program Supervisor	1
Social Services Director	1
Treatment Specialist	1
Social Workers	16
Operations Program Associate	1
Chaplains	1.5

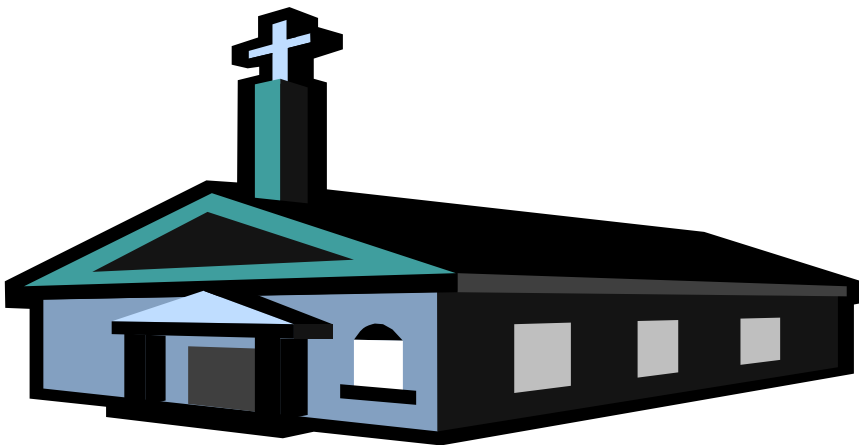
## CHAPEL

Inmates are provided with the opportunity to pursue lawful religious practices of the religion of their choice consistent with security practices and principles; rehabilitative goals of offenders; health and safety issues; allocation of limited resources and responsibilities and needs of this facility.

The goals and objectives of the Religious Services are to meet the wide variety of inmate religious needs through formal scheduled worship services, study groups, special events and counseling with 1.5 full-time staff chaplains, volunteers, and community clergy.

- **20,916 inmates attended religious services/chapel activities in FY 2006**
- **1,213 volunteer visits were made**
- **738 community clergy visits**
- **2 Prison Fellowship Seminars**
- **2 Prison Fellowship Angel Tree and Salvation Army Toy Lift**

Services are provided for Protestants, Catholics, Islamic, Pagan, Jewish, Native American and Eastern religious groups. Other religious needs may be practiced individually.



# TREATMENT

## AODA TREATMENT GROUPS

KMCI offers 2 Alcohol and Other Drug Abuse (AODA) Treatment Programs:

### NEXUS

Nexus is a four month, highly structured, intensive and comprehensive Alcohol and Drug Abuse/Addiction treatment program which also includes Domestic Relations treatment and Anger Management treatment utilizing a cognitive based approach. Major attention is given to the relationship between the three areas above and the inmates' criminal lifestyle and criminal thinking.

Entrance into treatment requires that the inmates' sentence structure permits either consideration for transfer to minimum security or parole upon successful program completion. The program is full-time and participants are assigned to work tasks within the unit as part of the treatment experience.

The Nexus Program utilizes individual and group counseling, written assignments, peer confrontation, educational computer software and other therapeutic milieu to assist participants in beginning the process of taking responsibility for their actions and learning pro-social values while addressing their chemical dependency.

Group modules in the program are:

- 1 - Alcohol and Drug Addiction
- 2 - Relapse Prevention
- 3 - Chemical Dependency Support Groups
- 4 - Domestic Relations
- 5 - Anger Management
- 6 - Responsible Thinking/Victim Impact
- 7 - Small Group Counseling
- 8 - Decision Making
- 9 - Cultural Diversity
- 10 - Personal Ethics
- 11 - Computer Software Lab

<b>TOTAL STARTING:</b>	<b>132</b>
<b>COMPLETIONS:</b>	<b>64</b>
<b>DROPOUT/TERMINATION</b>	<b>68</b>
<b>REFUSALS (193/83% ARE TIS)</b>	<b>232</b>
<b>SUCCESS RATE:</b>	<b>48%</b>
<b>SUCCESS RATE LESS</b>	
<b>DROP OUTS</b>	<b>56%</b>

### STOP

The special treatment options program (STOP) is a four-month chemical dependency program for men with academic limitations who have been identified by the assessment and evaluation process as appropriate participants. To enter, the participant must be eligible for consideration for minimum custody or parole upon program completion.

Participants are scheduled for part-time school. Each inmate develops, with staff help, their own release plan, a copy of which goes to their Parole Agent. Development of the plan involves using the alternative learning strategies such as computer enhanced self-learning strategies and videotaped self-awareness exercises.

STOP teaches and follows a problem-solving model in all facets of the program. This model will enable participants to learn to make more responsible decisions.

Psycho educational modules are competency based and individual progress is monitored. Group modules in the program are:

- 1 - Alcohol & Drug Addiction
- 2 - Relapse Prevention
- 3 - Chemical Dependency Support Groups
- 4 - Domestic Relations
- 5 - Anger Management
- 6 - Victim Impact
- 7 - Responsible Thinking
- 8 - Decision Making
- 9 - Job Seeking Skills
- 10 - Computer Lab

<b>TOTAL STARTING:</b>	<b>49</b>
<b>COMPLETIONS:</b>	<b>40</b>
<b>DROPOUT/TERMINATION</b>	<b>9</b>
<b>SUCCESS RATE:</b>	<b>82%</b>
<b>SUCCESS RATE LESS</b>	
<b>DROP OUTS</b>	<b>82%</b>

# TREATMENT

## INSTITUTION TREATMENT / SELF HELP GROUPS

**Grief/Loss Group** - This program is a ten-week initiative generally facilitated twice each year. It was developed to assist inmates with the many and varied losses encountered during incarceration, such as death, separation, physical disabilities, loss of freedom and divorce. When a group is not feasible or timely, individual counseling can be arranged. Program components include such things as:

- Stages of Grief
- Stage Progression/Lack of Progression/ Regression
- Types of Grief
- Individual Differences in the Grieving Process

**Incarcerated Veterans** – The Department of Corrections and Kettle Moraine Correctional Institution partner with the Department of Workforce Development, the Department of Veterans Affairs and the County Veterans Service Officers in an attempt to reduce recidivism rates and enhance community safety by establishing employment, training and benefit services for eligible incarcerated veterans. *102* inmates were reviewed during this report period, with *52* inmates receiving assistance through external linkage and *50* inmates receiving internal staff assistance

## Linkages with other Federal and State Entitlement and Assistance Programs

Six months prior to an inmate's release, social workers begin a screening process to determine whether inmates may be linked to services that would enhance their community stability.

**Domestic Violence Counseling** – This program includes a 12-week curriculum focusing on the different types, causes and course of action for change. Facilitators operate four programs annually. The Domestic Violence group is available to all inmates, with preference given to inmates who have a need for Domestic Violence Counseling. *44* inmates participated in the 4 groups of programming provided this year.

**Anger Management** – KMCI offers anger/aggression management programming through the use of the *American Correctional Association's Cage Your Rage Program*. This program is normally offered three times per year for a ten-week period to approximately 45 general population inmates. The program is also made available to adjustment center inmates with sufficient time to complete the modules. Inmates with an AODA Residential Treatment need are generally required to fulfill their anger management component in that program. This year *47* inmates participated in programming.

# TREATMENT

**Chemical Dependency Support Groups** – Alcoholics Anonymous, and Narcotics Anonymous groups are held at KMCI on a weekly basis. The meetings are conducted with the assistance of volunteers and a social service staff advisor. In FY2006, Alcoholics Anonymous had **217** attendees with an average of 5 inmates attending per week and Narcotics Anonymous has **110** attendees with an average of 2 inmates attending per week.

**Cognitive Intervention Program (CGIP)** – KMCI offers CGIP, Phase I and II programming. This program seeks to address high risk offender recidivism by changing the beliefs and thoughts that support the inmate's criminal behaviors. Through the co-operative efforts of staff from social services, education, and support service departments, **12** inmates completed the 15-week, two-phase program this year.

**Victim Impact Programming** – The program was adopted in its entirety from the *California Youth Authority Model*. This 17-week program is usually conducted twice per year. The program focuses on reducing criminality by heightening the awareness of victimization in crimes. Community volunteers intensify the depth of instruction. **17** individuals participated in this year's programming.

**Self-Help Inc** – This initiative is facilitated by a Social Services Advisor in co-operation with an outside volunteer that work to develop problem resolution skills with inmates. Twenty-six prepared lesson plans guide the process every 1<sup>st</sup>, 3<sup>rd</sup> and 5<sup>th</sup> week of each month. Sessions this year averaged **17** inmates per session, with **404** total participants. A sample of inclusions:

- *Choosing Friends*
- *Conflict Resolution*
- *Boundaries*
- *Well Being*
- *Fully Alive!*
- *Sorry, but...*
- *Responsibility vs. Shame*
- *Winning Comes 2<sup>nd</sup>*
- *Choosing Happiness*
- *Freedom as a State of Mind*

**Release Unit Programming** – KMCI operates a unit developed to enhancing the success of community reintegration for inmates being released into the community. Approximately four – six weeks prior to release, inmates are transferred to the unit to begin programming which includes:

- *Employment Search*
- *Resume Development*
- *Interviewing Strategies*
- *Parole Strategies*
- *Family Reintegration Strategies*
- *Obtaining/Reinstating a Driver's License.*
- *Employment Applications*
- *Community Corrections Employment Programs*
- *Goals Development*
- *Health Issues*
- *Community Resources*

# TREATMENT

Individualized work is available from a Special Education teacher for students with specialized needs to optimize their release success. Individual work is also done with releasing inmates and their social worker to solidify agent involvement and residential placements. Programming began in December 2004 with **555** inmates participating in the program to date and **503** completing the program. This year's reporting cycle indicates **333** program participants, and **300** program completions.

**Kay Nelson Living Skills** - – The Kay Nelson Living Skills Program prepares inmates to deal with the outside by teaching them what is essential for taking charge and maintaining control of their lives while incarcerated. The program deals with basic living skills and possible problems facing inmates upon release. The Salvation Army provides program funding. Kay Nelson, former manager of the Salvation Army store in Plymouth, was instrumental in the development and prolonged existence of the program.

Instructors include DOC staff, community individuals and other support and human resource agencies, who contribute their expertise to the program. A spring and fall group is run with **28** inmate participants annually. Components include:

- *Community Resources*
- *Self Esteem*
- *Supervision Expectations*
- *Victim Empathy*
- *Health*
- *Support Obligations*
- *Finances*
- *Coping Skills*
- *Meal Preparation*

Staff also wishes to express our deep appreciation to the *Plymouth area Salvation Army* who provides release clothing to needy inmates.

# EDUCATION

## STAFF

6 Vocational Teachers	3 Recreation Leaders
10 Academic Teachers	1 Education Director
1 Librarian	2.5 Clerical Positions
1 Guidance Counselor	

The goal of the Education Program is intended to reduce illiteracy, attain High School Equivalency Diploma (HSED), increase job skills, and make released inmates more employable and self-sufficient. Educational programming is offered to inmates at KMCJ who have educational needs in both academic and vocational areas.

## STUDENTS

*117 inmates earned HSED's*

## AVERAGE NUMBER OF STUDENTS

FULL TIME	250
PART TIME	<u>120</u>
TOTAL:	370

*65% read below a 6<sup>th</sup> grade level*  
*22% read from a 6<sup>th</sup> – 9<sup>th</sup> grade level*  
*12% read above a 9<sup>th</sup> grade level*

## ADDITIONAL EDUCATIONAL PROGRAMS

LAL (Language Arts Lab) uses phonics and a language experience approach to teach reading, writing, and touch typing skills

CLC (Computer Lab Courses) teaches GED subjects

Human Sexuality

HSED Civics

Habitat for Humanity Projects

Hats/Mittens Projects

Employability Skills

Correctional Learning Network - Satellite based HSED/Life Skills

FLORR (For Love of Reading/Relationships) – This is a Father Read Program

# EDUCATION

## VOCATIONAL PROGRAMS

The Vocational Programs in conjunction with Moraine Park Technical College began offering vocational college credits for work in classes. These include Welding, Auto-detailing, Custodial Skills, Cabinet Making, Masonry and Office Software.

### VOCATIONAL

*MPTC credits earned*

<b>WELDING</b>	<b>434</b>
<b>WOODS</b>	<b>284</b>
<b>AUTO DETAILING</b>	<b>184</b>
<b>MASONRY</b>	<b>242</b>
<b>CUSTODIAL</b>	<b>102</b>
<b>OFFICE SOFTWARE</b>	<b>347</b>

### MPTC COURSE COMPLETIONS FOR CREDIT

<b>WELDING</b>	<b>36</b>
<b>AUTO DETAILING</b>	<b>24</b>
<b>MASONRY</b>	<b>29</b>
<b>CABINET WORKING</b>	<b>22</b>
<b>CUSTODIAL SKILLS</b>	<b>49</b>
<b>OFFICE SOFTWARE</b>	<b>22</b>

## CROCHET PROJECT

In FY2006 KMCI continued a special project for the inmates. This project has inmates crocheting items to be donated to the community. This project allows inmates to either volunteer or fill one of eight paid positions. This project is a part of restorative justice, which allows inmates to do something for the community. In FY2006 the inmates participating in this project made hat/mitten sets, hats, and blankets. These items were donated to several agencies including Beacon House, Salvation Army, Sheboygan County Human Services and Oshkosh Labor of Love.

Afghans	76	Hat/Mitten Sets	126
Lap Blankets	59	Scarves	38
Baby Blankets	73	Shawls	22
Sweaters	149		

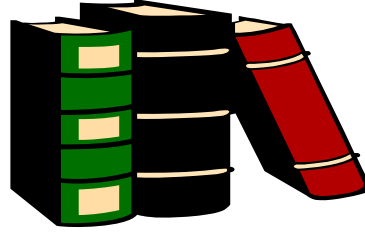
## COMPUTER COURSES

LAL (Language Arts Labs) uses phonics and a language experience approach to teach reading, writing, and touch typing skills. **SEVENTY-SEVEN LAL ACHIEVEMENT CERTIFICATES WERE ISSUED IN FY2006**

# EDUCATION

## LIBRARY ATTENDANCE

- Library attendance limit = 35 inmates per scheduled hour.
- **FY2006 Library Attendance = 47,766 inmates**
- An average of 3,981 inmates used the library each month



## RECREATION

- Gym attendance limit – 85 - 110 inmates per scheduled hour
- **Total FY2006 Recreation Attendance = 215,432**
- Recreation Programs include:

Volleyball League  
Scrabble Tournament  
Soccer League  
Chess Tournament  
Blacktop Basketball  
No Contact Football  
Dominoes Tournament

Softball League  
Inmate All Star Games  
Badminton Tournament  
Basketball League  
Cribbage Tournament  
Kickball League

## HOBBIES

- The Hobby Department operates Tuesday through Friday for 2 hours per day.
- **1865 inmates participated in Hobbies during FY2006.**
- Hobbies include:

Bead Work  
Painting/Drawing/Sketching  
Musical Instruments  
Cross Stitch

Knitting/Crocheting  
Latch Hook kits  
Card making

## INMATE JOB FAIR

On September 29, 2005, KMCI hosted the fifth annual job fair for inmates in the gymnasium. Approximately 175 inmates attended and viewed booths that companies set up. Thirty-one companies and service agencies participated. All of the inmates were within nine months of their scheduled release and had attended a workshop on how to participate in job fairs and how to converse with employers. They also had made cover letters and résumés. A workshop for the employers was offered in the morning prior to the start of the fair. The sixth annual fair will be held in the fall of 2006.

# MAINTENANCE

## STAFF

The Superintendents of Buildings and Grounds administrate the Maintenance Program, which consists of: (1) Auto Mechanic, (1) Carpenter, (1) Electrician, (1) Electronics Technician 5, (1) HVAC Specialist, (2) Utility Plant Operators, (3) Maintenance Mechanics 3, (2) Facility Repair Workers 4, (8) Maintenance Security Staff, (1) Office Operations Associate, (1) Building and Grounds Supervisor and (1) Building and Grounds Superintendent.

## WORK ORDERS

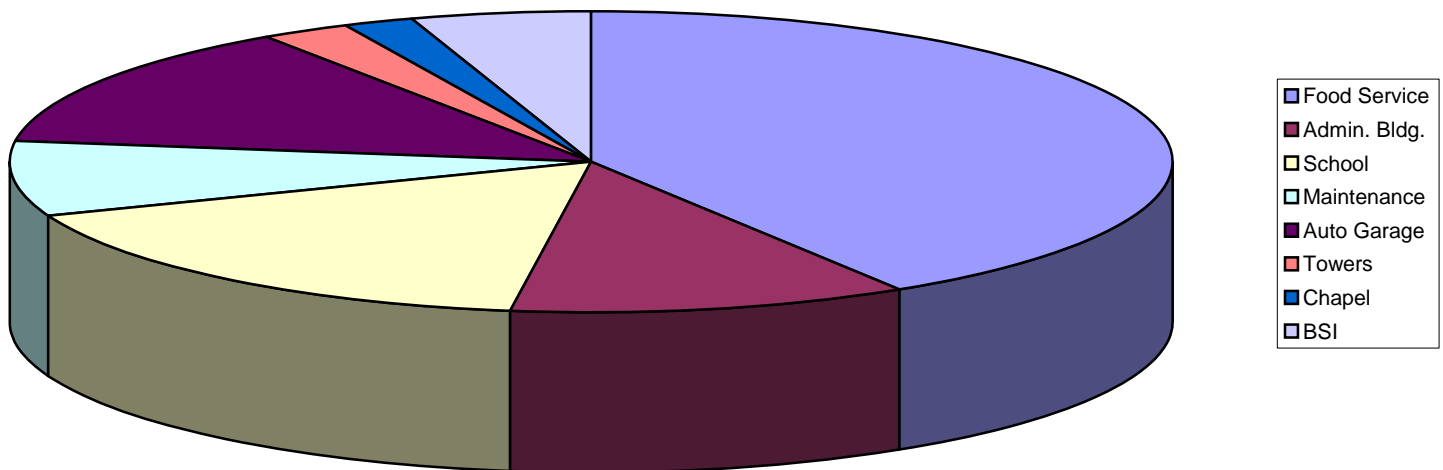
Incidental tasks completed in conjunction with approved work orders while in the same area cannot be included in totals unless reported to the maintenance department.

**Preventative and corrective work orders totaled 7170 for FY2006.**

### Work orders by location for FY2006

UNIT	W/O	UNIT	W/O	LOCATION	W/O
Unit 1	248	Unit 9	263	Food Service	878
Unit 2	373	Unit 10	271	Admin. Bldg.	235
Unit 3	310	Unit 11	332	School	360
Unit 4	235	Unit 12	259	Maintenance	172
Unit 5	259	Unit 14	289	Auto Garage	288
Unit 6	340	Unit 15	811	Towers	48
Unit 7	332	Unit 16	310	Chapel	38
Unit 8	249			BSI/Unit 13/Canteen	106
				Other	157

Department Work Orders



# MAINTENANCE

## MAJOR PROJECTS COMPLETED IN FY2006

- ⇒ Housing Unit Roof Replacement – Contractors replaced failing roofs on Units 7 and 8. Raised roof deck height on wing ends to match the roofline of the original structure. Projected funded by DOA/DSF.
- ⇒ Housing Unit Eave Troughs - Installation of gutters and downspouts on both sides of the center section of housing Units 7 & 8. Project funded by DOA/DSF.
- ⇒ #4 Well and Reservoir – To improve the reliability of the water supply system by adding a high capacity well and a 200,000 gallon reservoir. Project funded by DOA/DSF.
- ⇒ Replace Water Softening System in Units 6 and 15 – To remove the failed water softener system and install a replacement water softening system with brine reclaim. Project funded by DOA/DSF.
- ⇒ Institution HVAC Improvements –To address indoor comfort concerns in the control center, food service production offices, armory, laundry, auto garage, paint shop, and the maintenance offices. Project funded by DOA/DSF.
- ⇒ Professional tree service contract for the removal of 38 mature trees around the institution to improve sight lines.
- ⇒ Unit 2 Boiler Replacement – To remove two existing failed boilers in Unit 2 and install two replacement high efficiency boilers. Project funded by DOA/DSF.
- ⇒ Trim all institution shrubby around the institution to improve sight lines.
- ⇒ Service sinks – Replace service sink and mounting hardware. Sink assemblies damaged beyond reasonable repair during removal process to access blocked sewer laterals for service. Sinks were installed in Units 9 & 11 in the janitor closets. Project funded by DOA/DSF.
- ⇒ Command Post – Refurbish command post to make more suitable for NIMS and added additional direct phone lines, additional data jacks, built new tables, cabinets, and added new door to small conference room.
- ⇒ Unit 11 Boiler – To remove existing failed boiler and install a new replacement high efficiency boiler. Project funded by DOA/DSF.
- ⇒ Officers Station – Build a new officers station in the Laundry Department and Administration/HSU for improved inmate supervision and visibility.
- ⇒ Unit 14 Air Vent Covers – Install suicide restraint air vent covers in all cells to limit the potential for hazard. Project funded by DOA/DSF.
- ⇒ Institution Hand Rails – Inmate work crews painted all hand rails throughout the institution.
- ⇒ Roadway Signs – Installed and replaced traffic control signs to improve vehicle and pedestrian safety.
- ⇒ Sidewalk Replacements – Replacement of failed existing sidewalks in various areas of the institution to improve pedestrian safety.
- ⇒ Parking Lots & Roadway Striping – Contracted for the professional application of reflective paints to improve visibility and safety of institution roadways, parking lots, and walkways during inclement weather situations.
- ⇒ Unit Soap Dispensers – Installed all soap dispensers with antimicrobial soap dispensers in all areas of the institution.
- ⇒ Unit 1 Sergeant Booth Renovation – To enhance security and safety of Sergeant booth by installing lexan and an escape door.
- ⇒ Repair Water Main Break – Water distribution system break causing potable water to overflow and freeze onto adjacent roadway and parking areas around Unit 2 and 11 paved access areas. Projected funded by DOA/DSF.
- ⇒ Mini Splits (Air Conditioning) – Installed 3 mini splits in Unit 15 and 1 in unit 14 in various offices to address indoor comfort concerns.
- ⇒ Unit Bathrooms – Inmate work crews prepared, primed and painted all bathrooms in Units 1-12.
- ⇒ Exterior Doors – Inmate work crews prepared, primed and painted all exterior doors in Units 1-12.
- ⇒ Mini Splits (Air Conditioning) in Sergeant Booths - To address indoor comfort concerns, security concerns, i.e. noise, in the officers booths in Units 1-12. Funded by DOA/DFS.

# MAINTENANCE

## INSTITUTION RECYCLING

Conservation of resources is important, both as wise fiscal management and as concerned citizens. Every salvageable item sent to maintenance is reduced to the least common component through the efforts of assigned inmates. These efforts allowed the institution to recycle the following materials:

Scrape Iron, metals	16,580 lbs.
Commingled – tin cans, plastic, and aluminum	9.91 tons
Cardboard and Paper	41.28 tons

Recycling efforts also include the proper disposal of problematic items to local industries that recycle these items in an environmentally sound manner.

Controlled Medical Waste	602.6 lbs.
Tires	87 tires

## COMMUNITY SERVICE PROJECTS

The garden product continued in FY2006 as a community service project, an attempt to enable inmates at this institution to put something back into the community in the form of fresh garden produce. The institution's Food Service department used some of the fresh produce for meal production. Over 28,035 pounds of produce was donated to 2<sup>nd</sup> Harvest Food Bank and Broken Bread Hunger Prevention service located in Fond du Lac.

Total inmate hours for planting, maintaining, and harvesting in the garden totaled over 1900 hours. Produce donated in FY2006 totaled:

Cabbage	7,150 lbs.
Kohlrabi	50 lbs.
Beans	820 lbs.
Tomatoes	10,810 lbs.
Peppers (Green & Hot)	1920 lbs.
Zucchini/Squash	570 lbs.
Beets	790 lbs.
Radishes	40 lbs.
Cauliflower	450 lbs.
Broccoli	780 lbs.
Carrots	230 lbs.
Squash	1,545 lbs.
Cantaloupe	190 lbs.
Pumpkin	1,255 lbs.
Potatoes	445 lbs.
Watermelon	45 lbs.
Onions	935 lbs.
Okra	10 lbs.

# MAINTENANCE

The importance of other Community Service Projects completed by Maintenance staff and inmates increased measurably in FY2006. Maintenance staff invested 138 hours in planning, directing and supervising KMCI inmates in the construction and finishing of community service projects requiring hours of inmate labor.

The Community Service Project program in maintenance provides an opportunity for inmates to put something back into the community through addressing the needs of non-profit organizations and other state agencies.

Community Service Projects	Staff Hours	Inmate Hours
Custom Certificate Frames – CTC	10	50
Writing Desk – WCA	10	120
Writing Desk – Free Spirit Riders	10	120
4 Show Cases for Kiel Library	24	160
(2) Aluminum Chuck Wagons – Boy Scout Troop 599 Hales Corners, WI	40	300
Repaired (2) tents & (1) tent bag – Boy Scout Troop 599 Hales Corners, WI	1	24
Writing Desk –FDL Christian School	12	124
(1) Football Display Case – Shepherd of the Hills Grade School	1.5	24
(1) Football Display Case – Free Spirit Riders	1.5	24
Writing Desk – Free Spirit Riders	10	124
Knick Knack Boat – Free Spirit Riders	6	86
Writing Desk – KMCI Cancer Auction	12	124

## **LAUNDRY/TAILOR SHOP**

The laundering of all state owned clothing and institution laundry, including alterations and/or repairs for all security staff uniforms and inmate clothing, is completed at the KMCI laundry in the Maintenance building.

Equipment includes: 5 – 50 pound front load commercial washers and 6 – 50 pound commercial dryers.

Under the direction of the Laundry Sergeant, an average of 11 assigned inmates laundered 657,776 items in exactly 20,038 loads totaling 363,715 pounds in FY2006.

# Vermicomposting at KMCI

Vermicomposting is the process of recycling cardboard, coffee grounds and eggshells, and green food waste generated from the preparation of meals, utilizing the natural occurring microorganisms and red worms to do the composting. As the red worms digest the carefully prepared green food waste, coffee grounds, and eggshells they also breakdown the cardboard bedding material into a nutrient rich compost and castings mixture desirable as a soil amendment. KMCI will initially use the compost in the institution vegetable garden and flowerbeds.

Maintenance staff currently supervises inmates in the various tasks required for successful vermicomposting. Daily inspections; food collection, preparation, and storage; and harvesting activities consume an average of approximately 20 hours per week for 3-8 inmates, depending upon conditions.

The total number of inmate hours and involvement in the vermicomposting project will increase as the existing worm population increases naturally from the current population of approximately 820,000 worms in 62 boxes, to an anticipated population of 3,000,000 worms in 300 boxes in about 2 years.

The current population of worms consumes about 500 hundred pounds of green waste from the food preparation activities in the food service building each week. An average of 1,500 pounds of waste cardboard per month is shredded for use as bedding material.

At an projected approximate population of 3,000,000 worms, nearly all of the green food waste generated from food production activities would be consumed, as well as a significant portion of the 250 tons of waste cardboard generated by KMCI on an annual basis would be recycled.

At the expected full operating capacity of the vermicomposting project, the various required tasks of the operation will require the efforts of approximately 30 inmates on a daily basis. Completing all the tasks necessary for a successful vermicomposting operation could require a total over 1,000 hours of inmate labor per month to support all aspects of a socially and fiscally responsible project to reduce the volume of solid waste generated by KMCI going to landfills.

We are looking forward to the challenges associated with implementing this recycling effort on a scale equal to the volume of green waste generated by normal KMCI operations. We are also looking forward to the satisfaction and fiscal rewards of ultimately diverting approximately 100 tons annually of easily composted waste materials from the institution solid waste stream that is destined for local landfills.

# SECURITY

## STAFF

A total of 223 security staff (including Correctional Officers and Supervising Officers) work under the direct supervision of the Security Director.

The goal of the Security Department is to provide a safe and secure environment for the public, staff and inmates.

## SECURITY DEVICES

- 24 HOUR SECURITY COVERAGE
- 12 FOOT DOUBLE FENCE WITH RAZOR WIRE
- 7 ARMED TOWERS
- SECURITY SEARCHES of inmates, cells, & institution grounds
- RADIO communications Hi-Band & Low Band radios
- DRUG DOGS – Searches
- KEY CONTROL – Key Watcher Systems
- FIREARMS Training Range
- TOOL CONTROL Policy Computer Tracking Program
- COMPUTER TRACKING PROGRAM – including chit system in control
- EMERGENCY RESPONSE UNIT (E.R.U.) & Emergency Preparedness Manual (E.M.P.)

## INMATE PROPERTY

Inmates at KMCI are allowed to order personal property items. These items are processed in through our property department, which consists of 1 Sergeant and 2 Officers

## INMATE VISITS

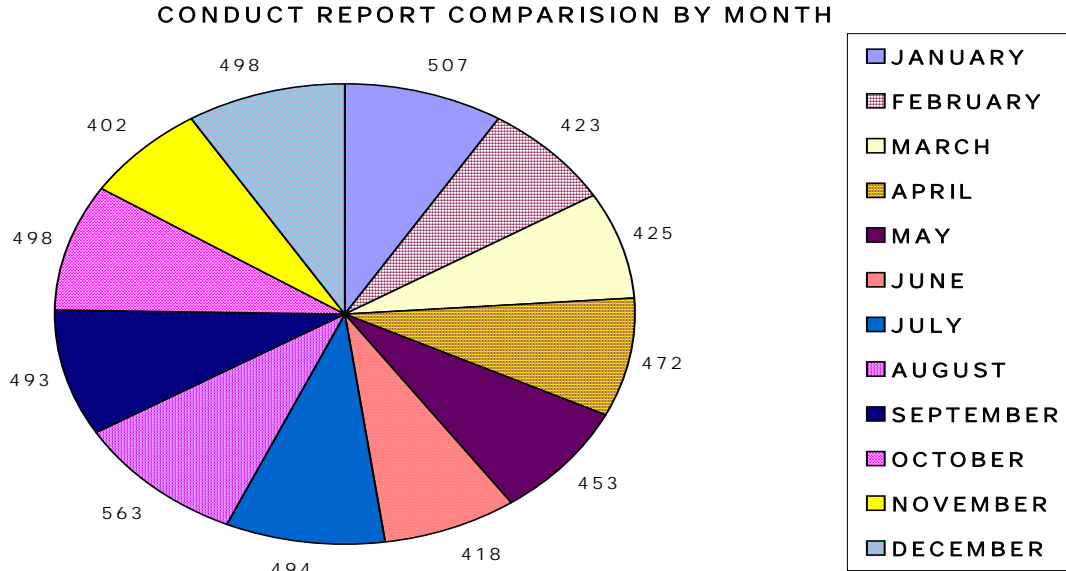
### **KMCI VISIT TALLEY FY2006**

<b>MONTH</b>	<b>VISITS</b>	<b>VISITORS</b>
JULY	1191	2339
AUGUST	932	1845
SEPTEMBER	811	1530
OCTOBER	1063	1992
NOVEMBER	884	1676
DECEMBER	1070	2103
JANUARY	810	1514
FEBRUARY	832	1517
MARCH	925	1674
APRIL	1184	2198
MAY	877	1636
JUNE	969	1868
<b>TOTAL</b>	<b>11,548</b>	<b>21,892</b>

# SECURITY

## CONDUCT REPORTS FY2006

MAJOR CONDUCT REPORTS	1648
MINOR CONDUCT REPORT/SUMMARY DISPOSITIONS	3998
TOTAL CONDUCT REPORTS	5446
APPEALED CONDUCT REPORTS	181



## KMCI TRIP SUMMARY

<u>YEAR</u>	<u># TRIPS</u>	<u># OFFICERS</u>	<u># INMATES</u>	<u>OVERTIME HOURS</u>	<u>TOTAL MILE</u>
FY2006	694	1438	1116	3620	79,678
FY2005	806	1657	1132	3618	87,785
FY2004	909	1944	1560	3817.75	99,588

# SECURITY

## INVESTIGATION REPORT

Throughout the course of a year, investigations relating to actives that violate the Wisconsin Administrative Code and Wisconsin State Statutes are conducted.

## NUMBER OF INVESTIGATIONS

MONTH	NUMBER OF INVESTIGATION FY2006	NUMBER OF INVESTIGATIONS FY2005
JANUARY	5	4
FEBRUARY	1	7
MARCH	5	4
APRIL	3	7
MAY	9	2
JUNE	3	3
JULY	1	1
AUGUST	5	5
SEPTEMBER	9	5
OCTOBER	3	4
NOVEMBER	3	7
DECEMBER	6	3
<b>TOTAL</b>	<b>53</b>	<b>52</b>

NUMBER OF INVESTIGATIONS PER MONTH (AVERAGE) 4.33 (FY2005) AND 4.41 (FY2006)

## BREAKDOWN BY TYPE OF INVESTIGATION

TYPE OF INVESTIGATION	TOTAL	TYPE OF INVESTIGATION	TOTAL
STAFF MISCONDUCT	10	SEXUAL CONDUCT	5
BATTERY/FIGHT	17	THREATS	1
CONTRABAND	7	INMATE INJURY	2
INMATE MISCONDUCT	1	THEFT	2
DRUGS	1	LYING ABOUT STAFF	2
GAMB/ ENTERPRISE & FRAUD	1	DISTRUBANCE	1
		GROUP RESIST/PETITIONS	3

# SECURITY

## STAFF TRAINING FOR FY2006

- ❖ **CRISIS NEGOTIATIONS** –A group of six staff members trained specifically as negotiators. Team members are prepared to negotiate during hostage situations. Lt. Zank is the team leader.
- ❖ **GANG TASK FORCE** – A group of trained staff members are trained in identifying Gang members. Capt. Galligan and Capt. Engebregtsen are the Gang Task Force Coordinators. Team members were sent to training which was offered at Great Lakes International. Conducted training at KMCI.
- ❖ **WEAPONS REQUALIFICATION** – Weapons requalification is done on a yearly basis for all security staff. Staff is qualified in the use of the Ruger Mini-14 and the Remington 870 Shotgun. Mike Dittmann, Capt. Tarr, Capt. O'Brien, Capt. Thiede and Capt. Galligan are firearms instructors. Instruction included chemicals/agents, Mark 9.
- ❖ **SNIPER TRAINING** – The KMCI Sniper Team is composed of 4 members. Each member is a trained sniper. During the FY2006 this team attended joint training with local law enforcement on several occasions and trained monthly at KMCI. The KMCI Sniper Team Leader is Capt. O'Brien.
- ❖ **FIRE DRILLS** – Institution fire drills are conducted in all areas of the institution on a regular basis to insure proper response to a fire emergency.
- ❖ **TORNADO DRILLS** – Tornado drills are conducted yearly to insure proper response in the event of a tornado.
- ❖ **COMPUTER TRAINING** – Staff utilizing computers as a part of their duties were given specific training to institutional systems. Coordinator for this training was Barb Taddey. Training is on going, consistent with institution needs.
- ❖ **CPR/AED** - This training was started in 2001 is on going to meet Red Cross standards. Training is provided to all interested staff for CPR/AED.
- ❖ **ERU (Emergency Response Unit)** - Training was conducted throughout the year. The team has 24 members. The training consisted of marching and tactical formations for crowd control and room clearing, use of batons, and use of chemical agents.

# BADGER STATE INDUSTRIES

On March 15, 2006, KMCI began to refurbish both manual and electric wheelchairs for the Wheelchair Recycling Program based in Madison, WI. After the chairs are refurbished, they are sent to Madison, where they are distributed to those in need of a wheelchair who do not have Medicare, insurance or monetary resources to purchase one. From March 15, 2006 to June 30, 2006, 115 wheelchairs were sent to KMCI, with 44 being fully refurbished. The others were used for parts or sold as scrap metal.

The BSI shop at Kettle Moraine also produces mattresses and a line of textiles. In FY2006 the following items were produced:

3,184 mattresses	1,220 laundry bags
724 shower curtains	5,764 bed sheets
17,700 terry towels	41,600 wash cloths
9,918 pillow cases	Other small amounts of specialty items

# LIST OF ACRONYMS

AED	Automated External Defibrillator
AODA	Alcohol and Other Drug Addictions
ATR	Alternative to Revocation
BOCM	Bureau of Offender Classification and Movement
BSI/BSE	Badger State Industries/Enterprises
C.L.C.	Computer Lab Courses
CGIP	Cognitive Intervention Program
CISD	Critical Incident Stress Debriefing
CPR	Cardiopulmonary Resuscitation
DA	District Attorney
DIS	Division of Intensive Sanctions
DNA	Deoxyribonucleic Acid
DNR	Department of Natural Resources
DOA	Department of Administration
DOC	Department of Corrections
DSF	Division of State Facilities
EAP	Employee Assistance Program
EMP	Emergency Preparedness Manual
ERU	Emergency Response Unit
FDL	Fond du Lac
FLORR	For Love of Reading/Relationships
FY	Fiscal Year
GBCI	Green Bay Correctional Institution
GED	General Education Development
HSED	High School Equivalency Diploma
HSU	Health Service Unit
HVAC	Heating/Ventilation/Air Conditioning
ICRS	Inmate Complaint Review System
KMCI	Kettle Moraine Correctional Institution
L.A.L.	Language Arts Lab
MPTC	Moraine Park Technical College
PD	Police Department
PRC	Program Review Committee
SMART	Self Management and Recovery Training
SOT	Sex Offender Treatment Programs
STOP	Special Treatment Options Program
TIS	Truth in Sentencing
U.W.H.	University of Wisconsin Hospital
UPQHC	United Professionals for Quality Health Care
VSVH	Volunteer Services for Visually Handicapped
VWS	Victim Witness Surcharge
WCA	Wisconsin Correctional Association
WEAC	Wisconsin Education Association Council
WPEC	Wisconsin Professional Employment Council
WSBTC	Wisconsin State Building and Trades Council
WSEU	Wisconsin State Employee Union