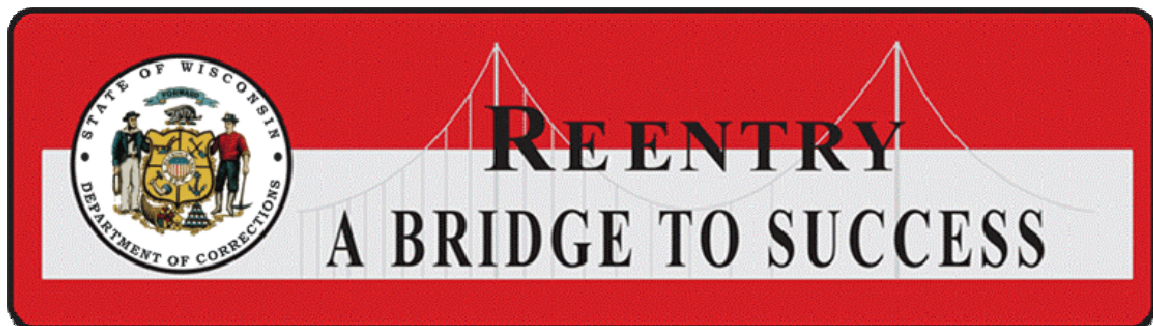


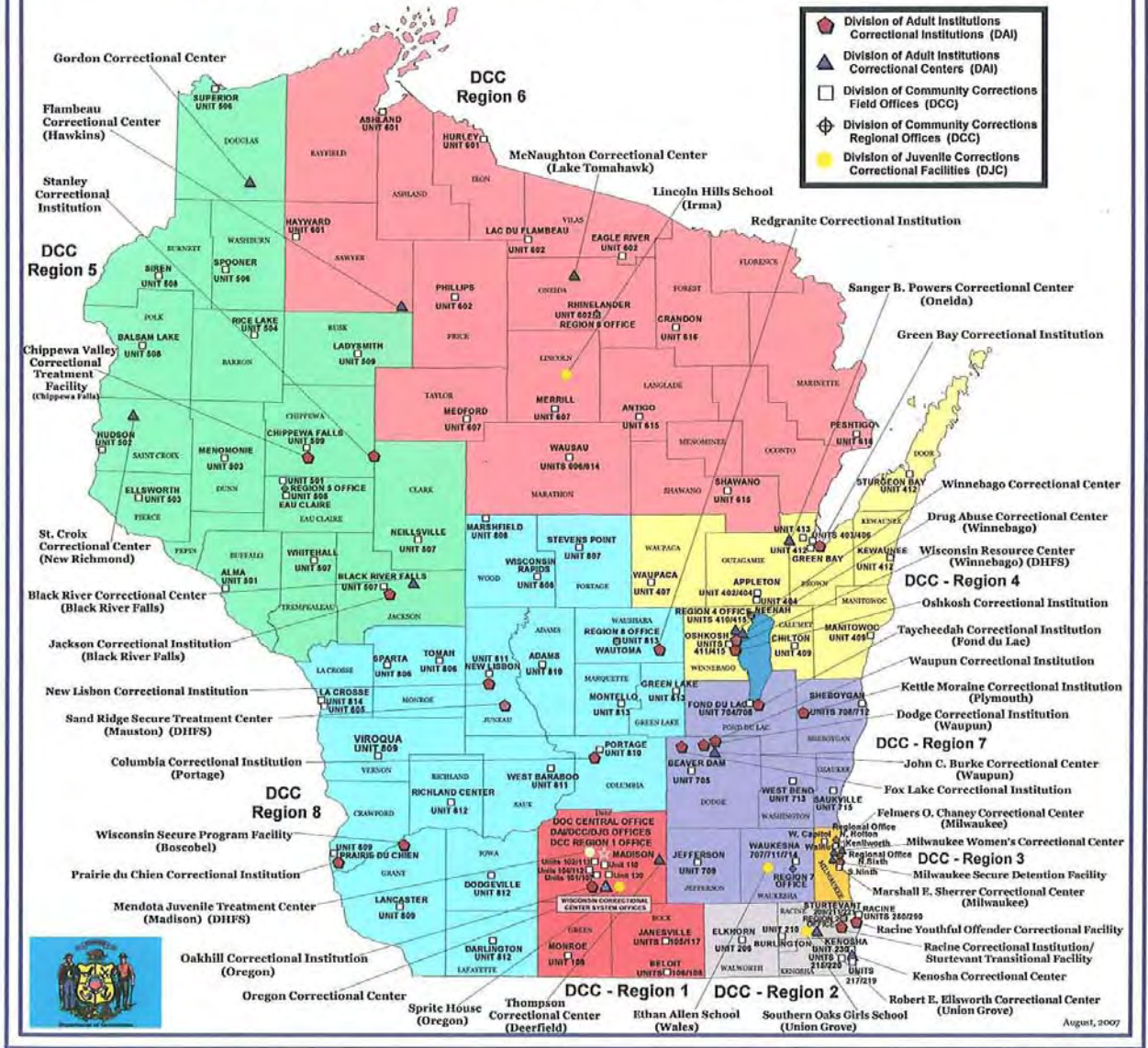


Wisconsin Department of Corrections
Opportunities and Options
Resource Guide

January 7, 2011



WISCONSIN DEPARTMENT OF CORRECTIONS STATE CORRECTIONAL FACILITIES



August, 2007



WISCONSIN DEPARTMENT OF CORRECTIONS FACILITIES

Maximum Institutions

Columbia Correctional Institution (CCI)
Dodge Correctional Institution (DCI)
Green Bay Correctional Institution (GBCI)
Taycheedah Correctional Institution (TCI) **
Waupun Correctional Institution (WCI)
Wisconsin Secure Program Facility (WSPF)

Medium Institutions

Fox Lake Correctional Institution (FLCI)
Jackson Correctional Institution (JCI)
Kettle Moraine Correctional Institution (KMCI)
Milwaukee Secure Detention Facility (MSDF)
New Lisbon Correctional Institution (NLCI)
Prairie du Chien Correctional Institution (PDCI)
Racine Correctional Institution (RCI)
Racine Youthful Offender Correctional Facility (RYOCF)
Redgranite Correctional Institution (RGCI)
Stanley Correctional Institution (SCI)
Oshkosh Correctional Institution (OSCI)
Wisconsin Resource Center (WRC)

Minimum Institutions

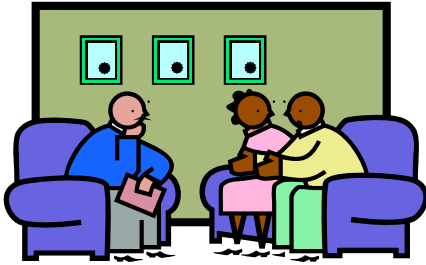
Chippewa Valley Correctional Treatment Facility (CVCTF)
Oakhill Correctional Institution (OCI)
Sturtevant Transitional Facility (STF)

Correctional Centers

Black River Correctional Center (BRCC)
Drug Abuse Correctional Center (DACC)
Felmers O. Chaney Correctional Center (FCCC)
Flambeau Correctional Center (FCC)
Gordon Correctional Center (GCC)
John C. Burke Correctional Center (JBCC) **
Kenosha Correctional Center (KCC)
Marshal Sherrer Correctional Center (MSCC)
McNaughton Correctional Center (MCC)
Milwaukee Women's Correctional Center (MWCC) **
Oregon Correctional Center (OCC)
Robert E. Ellsworth Correctional Center (REECC) **
St. Croix Correctional Center (SCCC)
Sanger Powers Correctional Center (SPCC)
Thompson Correctional Center (TCC)
Winnebago Correctional Center (WCC)

**** Wisconsin Women's Correctional Center System
(WWCCS) Facility**

WISCONSIN DEPARTMENT OF CORRECTIONS PROGRAMS



Treatment

Anger Management (AM)
AODA Aftercare
AODA Relapse
AODA Residential
Childhood Abuse Counseling (CAC)
Challenge Incarceration Program (CIP)
Cognitive Intervention Program (CGIP)
Domestic Violence (DV)
Earned Release Program (ERP)
Mental Illness Chemical Abuse (MICA)
Parenting
Sex Offender Treatment (SOT)
Sex Offender Treatment Program (SOTP)
Transitional Treatment Center (TTC)

Support Groups

Alcoholic Anonymous (AA)
Self Management and Recovery Training (SMART)
Narcotics Anonymous (NA)

Education

General Equivalency Diploma (GED)
High School Equivalency Diploma (HSED)
Adult Basic Education (ABE)
English as a Second Language (ESL)
Special Education (SPED)
Incarcerated Individual Program (IIP)

Vocational

Auto Detailing
Auto Maintenance
Auto Repair
Bakery
Barbering/Cosmetology
Braille Transcription
Building Maintenance
Business Applications
Cabinetmaking
Computer Literacy
Custodial Services
Data Entry
Drafting-Computer-Mechanical
Food Service/Culinary Arts
Fork Lift
Graphic Arts
Greenhouse/Garden Center Specialist
Grounds Maintenance
Horticulture
Landscaping
Machine Tool Operations
Masonry
Microcomputer Specialist
Motorcycle/Marine Power Tech
Office Assistant
Office Software Applications
Painting
Printing
Refrigeration Servicing
Small Engine Repair
Welding
Woodworking

TABLE OF CONTENTS

PRIMARY TREATMENT SERVICES	8
Anger Management Program (AM).....	8
AODA Residential Program.....	8
Challenge Incarceration Program (CIP)	8
Cognitive Intervention Program 1 and 2 (CGIP).....	9
Domestic Violence Program (DV)	9
Dual Diagnosis.....	9
Earned Release Program (ERP).....	9
Non-AODA Earned Release Program/Challenge Incarceration Program.....	10
Operating a Vehicle While Impaired (OWI)	10
Sex Offender Treatment (SO-2)	10
Sex Offender Treatment (SO-4)	10
Violence in Relationships	11
EDUCATION SERVICES	11
TABE Testing	11
Academic	12
Adult Basic Education (ABE)	12
High School Equivalency Diploma Preparation.....	12
High School Equivalency Diploma Testing	12
Title 1	13
Special Education (SPED).....	13
Plato Educational Software.....	13
Wisconsin Institutions Literacy Council	13
Vocational Related Course Work	13
Vocational Programs and Courses.....	14
College Programs.....	14
Incarcerated Individuals Program (IIP)	14
Perkins Grant	14
BADGER STATE INDUSTRIES	15
CROSS DIVISIONAL TEAMS (CDT)	15
Cross Divisional Teams.....	15
Goals and Responsibilities.....	16
Team Membership.....	16
Subcommittees.....	16
Meetings	17
Clerical Support.....	17
Bi-Annual Reports.....	17
RE-ENTRY INITIATIVE	17
Pre-Release Curriculum.....	17
Pre-Release Curriculum Modules.....	17
Wellness Module 1	17
Education Module 2.....	17

Employment Module 3	18
Family Support Module 4.....	18
Financial Literacy Module 5.....	18
Health Module 6	18
Housing Module 7	18
Personal Development Module 8.....	18
Transportation Module 9	18
Transitional Prep Module 10	18
Library Services.....	19
General Collection	19
Interlibrary Loan System	19
Legal Collection.....	19
Religious Programs.....	19

WISCONSIN CORRECTIONAL INSTITUTIONS	20
Chippewa Valley Correctional Treatment Facility (CVCTF)	20
Columbia Correctional Institution (CCI).....	20
Dodge Correctional Institution (DCI).....	21
Fox Lake Correctional Institution (FLCI)	21
Green Bay Correctional Center (GBCI)	22
Jackson Correctional Institution (JCI).....	22
Kettle Moraine Correctional Institution (KMCI)	23
Milwaukee Secure Detention Facility (MSDF).....	23
New Lisbon Correctional Institution (NLCI)	24
Oakhill Correctional Institution (OCI)	24
Oshkosh Correctional Institution (OSCI)	25
Prairie du Chien Correctional Institution (PDCI).....	25
Racine Correctional Institution (RCI)	26
Racine Youthful Offender Correctional Facility (RYOCF)	26
Redgranite Correctional Institution (RCI)	27
St. Croix Correctional Center (SCCC) (Male)	27
Stanley Correctional Institution (SCI).....	28
Sturtevant Transitional Facility (STF).....	28
Waupun Correctional Institution (WCI).....	28
Wisconsin Resource Center (WRC)	29
Wisconsin Secure Program Facility (WSPF)	29

WISCONSIN CORRECTIONAL CENTER SYSTEM.....	30
Black River Falls Correctional Center (BRCC)	30
Drug Abuse Correctional Center (DACC)	30
Felmers O. Chaney Correctional Center (FCCC).....	30
Flambeau Correctional Center (FCC).....	30
Gordon Correctional Center (GCC).....	31
Kenosha Correctional Center (KCC).....	31
Marshall Sherrer Correctional Center (MSCC).....	31
McNaughton Correctional Center (MCC)	32
Oregon Correctional Center (OCC).....	32
St. Croix Correctional Center (SCCC) (Male)	32
Sanger Powers Correctional Center (SPCC)	32

Thompson Correctional Center (TCC) 33
Winnebago Correctional Center (WCC) 33

WISCONSIN WOMENS CORRECTIONAL CENTER SYSTEM 34
John C. Burke Correctional Center (JBCC) 34
Milwaukee Women’s Correctional Center (MWCC)..... 34
Robert E. Ellsworth Correctional Center (REECC) 34
St. Croix Correctional Center (SCCC) (Female)..... 35
Taycheedah Correctional Institution (TCI) 35

PRIMARY TREATMENT SERVICES

Anger Management Program (AM)

Anger Management is a cognitive-behavioral based program designed to address the needs of violent offenders whose aggressive behaviors tend to be impulsive and reactive rather than instrumental and pre-planned. In addition to cognitive restructuring, AM programs teach offenders cognitive and interpersonal skills to deter and replace violent behaviors. These skills include stress management, impulse control strategies, assertiveness skills, communication skills, identifying personal anger precursors (thoughts and situations that provoke angry reactions), handling criticism and provocation. Lessons are presented by social service staff to groups of eight to 15 offenders. Group sessions are generally 90 minutes in length and held once a week. AM is offered both as a stand-alone program and as a component of AODA Residential and Sex Offender programs. AM is offered in both male and female institutions as well as in juvenile institutions.

AODA Residential Program

AODA Residential is a four month, full-time treatment program provided to offenders with more serious, chronic issues with both substance abuse/dependence and criminal behavior. The program includes substance abuse education and relapse prevention. Issues of criminal behavior and responsible self-management skills are also integral components of the program. Besides increased knowledge about substance abuse, offenders are offered opportunities to gain greater self-awareness, personal control and skills training. Examples are anger management, rational and responsible decision making, social skills, victim impact, problem solving and conflict management. Residential programs are facilitated by certified substance abuse counselors and overseen by clinical supervisors to groups of 12 to 15 offenders. Residential programs are offered in both male and female institutions. A.R. Phoenix, A New Freedom, is the standardized curriculum for all residential programs.

Challenge Incarceration Program (CIP)

CIP is a statutorily established program that allows judges to sentence non-violent, non-assaultive offenders with substance abuse needs to this full-time, six month intensive program that combines military training with alcohol/drug treatment. Program components are structured around treatment and discipline. Program activities include personal development counseling through criminal and rational thinking, alcohol and drug counseling, educational programming, physical exercise, manual labor, instruction in military bearing, and drill/ceremony. CIP is open-ended and facilitated by certified substance abuse counselors and overseen by a clinical supervisor. CIP is offered to both male and female offenders.

Cognitive Intervention Program 1 and 2 (CGIP)

The CGIP teaches violent offenders specific skills that assist them in identifying, controlling and changing the personal thinking patterns and underlying beliefs that support their criminal behaviors. The goal of CGIP is not to make the offender change, but to motivate the offender to change themselves. CGIP consists of 30 lessons and homework assignments. Groups are facilitated by a variety of trained staff to groups of 8 to 15 offenders. Groups are generally two hours in length and are held twice a week for 15 weeks. In order to successfully complete the program, participants must actively participate in groups, satisfactorily complete all homework assignments and demonstrate they have acquired the specific skills taught in the program. CGIP is offered in both male and female institutions as well as in juvenile institutions.

Domestic Violence Program (DV)

Domestic violence is cognitive-behavioral based program designed for male offenders who have shown a pattern of abuse/violence to their significant and intimate partners. The curriculum is designed to help batterers identify their own cognitions that have justified violence and enabled them to be abusive to their partners and teach them skills to change their thoughts/beliefs that have lead to their abusive behaviors. A major program objective is for the offender to be able to identify alternative beliefs and intervention strategies to end their criminal and abusive behaviors as well as learn and demonstrate non-abusive and non-controlling behaviors.

Dual Diagnosis

Dual diagnosis is a six to 12 month program for offenders diagnosed with a substance use disorder and with a severe and persistent mental illness. Programs are designed as therapeutic communities which are structured programs in which members work together for their treatment. All participants are actively involved in the community to shape more responsible and appropriate behavior. The programs include psychiatric treatment, therapy groups, psycho-educational groups, individual counseling sessions, pre-release planning and post-release follow-up. Classes include AODA education, mental illness education and management, psychotropic medication regimens, Cognitive Interventions Program, Anger Management, problem solving, assertiveness training, relaxation techniques, relapse prevention and release planning. Dual diagnosis is facilitated by psychological services staff and social service staff who are certified substance abuse counselors to groups of 14 to 25 offenders. This program is offered to both male and female offenders.

Earned Release Program (ERP)

Modeled after CIP, ERP allows judges to sentence non-violent, non-assaultive offenders with substance abuse needs to this full-time, six month intensive program designed to reduce the incidence of future criminal behavior. ERP treatment modules include alcohol/drug education, dependency and addiction, relapse prevention, modification of high risk and thrill-seeking behavior, rational behavior training, responsible decision making and restorative justice concepts. Community reintegration is a

primary focus throughout the program connecting offenders with their respective Probation and Parole agents during each program phase.

Non-AODA Earned Release Program/Challenge Incarceration Program

The Non-AODA ERP/CIP program expands the eligibility criteria for both ERP and CIP to include persons convicted of non-violent and non-assaultive crimes who have one or more treatment needs **not** related to substance use that is directly related to their criminal behavior. This full time, six month, residential program includes components similar to those offered in ERP and CIP minus the substance abuse components. The program is facilitated by social service and education staff to groups of 10 offenders and offered in both male and female institutions.

Upon successful completion of CIP, ERP/OWI, and Non-AODA ERP/CIP, the department notifies the sentencing court who, in turn, places the offender on extended supervision by modifying the bifurcated sentence by reducing the confinement portion of the sentence and lengthening the extended supervision portion of the sentence.

Operating a Vehicle While Impaired (OWI)

A full-time, six month intensive program for offenders convicted of operating a vehicle while impaired for the fifth offense or more, under Wisconsin statute 346.63(1)(a). Program components are similar to those in ERP with a greater focus on preventing future impaired driving incidents. OWI is facilitated by certified substance abuse counselors and overseen by clinical supervisors to groups of 10 offenders. OWI is offered in both male and female institutions.

Sex Offender Treatment (SO-2)

SO-2 is a short-term treatment program, lasting six to 12 months, meeting once or twice a week. This program covers topics such as offense disclosure, denial and minimization, victim empathy, cognitive distortions, criminal thinking, and re-offense prevention. Both written homework assignments and group participation are expected. SO-2 is facilitated by psychological and social services staff to groups of 10 to 15 offenders and offered in both male and female institutions.

Sex Offender Treatment (SO-4)

SO-4 is a long-term treatment program. The Oshkosh Sex Offender Treatment Program (SOTP) and the Beacon Program at RCI are intensive, residential sex offender treatment programs. The program lasts two to five years, depending on the rate of the offender's progress. Both written homework assignments and group participation are expected. There are three basic phases of the SO4 programs:

1. Enhanced Thinking Skills
2. CORE, consisting of 20 blocks covering such topics as offense disclosure, victim empathy, fantasy, re-offending risk factors, and "Future Me" work. This consists of developing ideas about the

person the offender is working towards being, including life goals, desires for self improvement, achievement, and fulfillment, and examining potential setbacks to these goals.

3. Reintegration Maintenance Group (RMG). This phase is intended to assist the offenders in developing a personalized relapse prevention plan.

SO-4 is facilitated by psychological and social services staff to groups of 14 offenders and offered in both male and female institutions.

Violence in Relationships

Violence in Relationships is a cognitive-behavioral based program that identifies the different types of domestic abuse and factors in our society that contributes to the problem of domestic violence. This program also covers issues including why the victims stay in abusive relationships and the impact of domestic abuse on the family. Violence in Relationships is designed for female offenders. Both DV programs are presented by trained facilitators to groups of 11 to 16 offenders. Group sessions are generally 90 minutes in length and are held once or twice a week for a total of three to six months.

EDUCATION SERVICES

The Department of Corrections provides inmates the opportunities to improve reading, writing, and mathematics skills, learn vocational skills, life skills, career awareness skills, and obtain a high school equivalency diploma. Post-secondary vocational programming is offered in conjunction with the Wisconsin Technical College System. College correspondence courses and MATC College of the Air Associate Degree courses are also offered.

TABE Testing

The TABE (Test of Adult Basic Education) is an achievement test that measures academic skill levels. Every inmate is required to take a short version of the TABE when they enter the Department of Corrections A&E. Scores from this test are used to determine the educational needs and goals of each inmate and are considered when placement decisions are made.

All inmates enrolled in school at maximum and medium security institutions, either vocational or academic, are required to retest with the TABE Full Battery. The TABE will identify strengths and weaknesses and can be used to produce an education plan for each inmate.

TABE testing is considered a required condition of school participation. Refusal to take the test, or not giving an honest effort on the test, will result in immediate disqualification from school and /or conduct report.

Academic

Academic programs include classes that instruct and enhance reading, writing, mathematics and other basic skills necessary for functional literacy and the attainment of a high school equivalency diploma (HSED).

Adult Basic Education (ABE)

All major institutions, except Dodge Correctional Institution (DCI), offer Adult Basic Education instruction. These studies generally include reading, writing, math and life skills. The type of instruction in these areas will vary depending on the individual teacher and site. Instruction may include, among other methods, individualized instruction, computer-assisted instruction, inmate or community tutor assistance, small group instruction, and regular class instruction.

High School Equivalency Diploma Preparation

All major institutions, except DCI, also offer instruction to prepare inmates for the HSED (High School Equivalency Diploma) test. Generally, inmates with academic levels of 9.0 grade or higher in Reading Comprehension or Math Number Operations on the TABE test level D are enrolled in HSED preparation.

Instruction is provided in each of the areas which comprise the HSED:

Citizenship/Civics	Mathematics*
Employability Skills	Science*
Health	Social Studies*
Literature and Arts*	Writing*

High School Equivalency Diploma Testing

Employability skills: Skills in job seeking, applying for work, retaining a job, and self-development and awareness skills. Required training in this area may be waived based on employment experience.

Career awareness: Instruction in setting short-term and long-term career goals. This section may be addressed during processing at A&E.

Successful completion of Wisconsin Department of Public Instruction tests in Health and Civics or equivalent course credit.

Successful completion of GED tests in each of the areas marked with an asterisk above. Successful completion is defined as a minimum score of 410 on each test, with a minimum total score of 2250 on all five tests combined. Tests can be retaken after evidence is presented that additional preparation has been made.

Completion award is a Wisconsin High School Equivalency Diploma issued by the Wisconsin Department of Public Instruction.

Title 1

A program for students under age 21 who are working in an Adult Basic Education class and need extra assistance in their studies. This program serves as a supplement, or addition, to the normal school program.

Special Education (SPED)

This program is designed for students, under age 22, who have a disability that interferes with their education. Adaptations to the regular classroom instruction, resource room opportunities, or placement in a special class for one or more hours per day, are ways this program assists with the qualified students in achieving high school grades.

Plato Educational Software

Plato is a comprehensive software package that provides education lessons on topics from beginning reading and writing to pre-calculus and managing finances. Plato also provides a comprehensive curriculum of learning activities at multiple levels of skills, from first grade through post-high school, allowing progress from one to the next.

Subject areas include science, social studies, mathematics, reading, writing, life and job skills.

Wisconsin Institutions Literacy Council

This project offers tutoring to inmates in subject areas where they need assistance. Inmate tutors (qualified applicants) are trained in PLATT basic literacy tutoring techniques to assist inmate students become independent readers, writers, and speakers of English. Inmate tutors are hired to a paid position within the institution.

Vocational Related Course Work

All Wisconsin Technical College System (WTCS) certified programs require some related course work. Requirements vary depending on the program. Related course work can include communications, human/job relations, math, occupational success, strategies, student success and small business development.

These courses are different from general education courses. They are designed specifically to accompany vocational courses and credit is awarded for successful completion.

Non-credit vocational related classes are also offered at some sites.

Vocational Programs and Courses

Vocational training is available at most facilities that have on-site education services. All vocational classes that are offered are affiliated with the Wisconsin Technical College System. Some are short-term classes that provide basic skills in a variety of occupations. Students completing these accredited programs receive certificates, vocational diplomas, or credit toward a 2-year associate degree. Vocational training is provided in 30 different occupational areas. It is possible in many cases to start a vocational program at one institution and continue or complete it at another institution. Due to overcrowding issues, individuals are not able to be involved in numerous vocational programs. Students should concentrate in one occupational area to attain work-related job skills that may be used while incarcerated and after release.

College Programs

Correspondence courses for college credit are offered through several University of Wisconsin campuses. Inmates are responsible for tuition costs and costs for books. Internal Management Procedure #23 includes specific policies for correspondence courses.

Incarcerated Individuals Program (IIP)

The IIP, formerly the Incarcerated Youth Offender Program (IYOP), is a federally sponsored grant that provides inmates/students with educational opportunities to complete college coursework, learn about their academic abilities, and identify their occupational skill levels before being released, thereby increasing opportunities for success upon community re-entry. Program goals are to: reduce recidivism through education; provide successful college experience and transferable credits; and increase opportunities to secure employment upon re-entry.

Perkins Grant

The Department of Corrections (DOC) is designated as the agency that will administer Career and Technical Education (occupational) programs for inmates in correctional facilities in Wisconsin. The DOC Office of Education, in carrying out the Career and Technical Education (occupational) programs for the incarcerated, gives special consideration:

1. To provide services to inmates, who are completing their sentences and preparing for release;
2. To provide Career and Technical Education (occupational) programs under the contracts with the WTCS districts for both men and women who are incarcerated;
3. To establish Career and Technical Education (occupational) programs in correctional facilities to add to their programming including minor and major equipment; and

4. To coordinate Career and Technical Education (occupational) services to inmates before and after their release in cooperation with the eligible recipients.

Funds may only be used for one or more of the following activities:

1. Career and Technical Education (occupational) programs including apprenticeship, which are based on labor market projections of future employment so that inmates shall receive training for new, emerging, nontraditional, and changing occupations;

2. Training and adoption of competency-based curriculum (WIDS) in Career and Technical Education (occupational) programs;

3. Purchase of major and minor equipment to meet or maintain parity in Career and Technical Education (occupational) programs and that the equipment pertains to the occupations that the inmates are preparing to enter after release; and,

4. Coordination of Career and Technical Education (occupational) services, in cooperation with other Perkins eligible recipients including the Technical College Districts, for inmates before and after their release.

BADGER STATE INDUSTRIES

Work programs exist at each institution to provide inmates with meaningful activity, teach skills they can use for future employment, help them develop positive work habits, and provide services necessary for the institution to function. Work assignments available at most institutions include:

Barber	Canteen Worker
Clerk	Custodial
Food Services	Institution Runner
Laundry	Maintenance
Recreation Aide	Yard Work

Some institutions also have work assignments through Badger State Industries.

CROSS DIVISIONAL TEAMS (CDT)

Cross Divisional Teams

The current cross divisional teams are AODA, Anger Management, CGIP, Domestic Violence, Education, Pre-Release and Sex Offender Treatment.

Goals and Responsibilities

Goals of all the Cross Divisional Teams are to identify subcommittees and members; update standards based on new format; develop a QA tool and process; review and update curriculum; review and update forms; develop a work plan; prepare end of fiscal year (July 1 – June 30) report that includes: location and dates of program delivery, analysis of participation, numbers: success versus failure, current work plan, and future goals; identify training requirements for facilitators; and to develop manuals for facilitators.

Responsibilities of the CDTs are to assist in the ongoing development, updating and dissemination of offender programs standards, operating manuals, and related documentation requirements; reviewing of program approval requests and abstracts referred by the Director of OPS and make recommendations regarding implementation; concerns or questions shall be referred to the OPS sponsor; to establish and direct the progress and action(s) of the subcommittees.

Team Membership

Each Cross Divisional Team (CDT) will have two co-chairs appointed by the Director of the Office of Program Services (OPS). Each CDT will have an OPS sponsor. CDT's will communicate with OPS through the sponsor. Sponsors will attend CDT meetings. Co-chairs will be appointed to two year terms. Co-chairs will be given priority for attendance at related conferences. As budget allows, OPS will provide funding for CDT related materials and training. Co-chairs will have responsibility for general members' attendance, assignments and productivity on the committee. Co-chairs will recommend general membership to the Director of OPS. General members will serve two-year terms. General members may serve more than two-year terms. General members will be staff involved in the development, implementation, facilitation, and supervision or coordination focus of the CDT.

Subcommittees

Subcommittees will consist of no more than five members, of which one is a CDT liaison. Each CDT will have sub-committees that will serve as experts in the area assigned to them. Subcommittee members will be assigned by the CDT. The subcommittee members will appoint chairs of the subcommittee. Subcommittee chairs will have responsibility for subcommittee members' attendance, assignments and productivity on the subcommittee. Subcommittees are encouraged to use video or teleconference technology whenever possible. Each subcommittee will have a sponsor member from the CDT. Subcommittees will report/communicate with the CDT through the sponsor. Subcommittee members will be staff/personnel involved in the development, implementation, facilitation, supervision or coordination of the focus of the subcommittee. Subcommittee members may include DOC staff, personnel from outside agencies or local program providers. Subcommittees may include: Curriculum; Quality Assurance; Standards and Operating Manuals; Training and Implementation; Forms, Data and Tracking; and Partnerships. Other subcommittees may be formed at the discretion of the CDT.

Meetings

Cross Divisional Teams will meet at least quarterly. CDT co-chairs and subcommittee chairs are to establish meeting dates/times/locations. Agendas and minutes will be taken by both CDT's and subcommittees utilizing the standardized format. Agendas will be established by the co-chairs and forwarded to all CDT and subcommittee members and OPS at least one week prior to the established meeting date. Draft minutes of the CDT's and subcommittees are to be reviewed/corrected by the co-chairs of the CDT's at least two weeks after the meeting. Final minutes are to be forwarded to OPS. After approval, OPS will forward the minutes to DAI staff responsible for placement on DOCNet.

Clerical Support

Co-chairs of the CDT's and subcommittees are responsible for working with site management for provision of clerical support. Clerical support is not to be a member of the CDT or subcommittee. OPS can be contacted for provision of clerical support for meetings held in Central Office.

Bi-Annual Reports

All CDT's will submit a Bi-Annual report to OPS. Bi-Annual reports will be submitted following established format.

RE-ENTRY INITIATIVE

Pre-Release Curriculum

This service provides a consistent and structured pre-release curriculum to all inmates that are within ten years of release and assists in facilitating their successful transition to the community. Areas of focus will include housing, employment, education, financial literacy, family support, health, wellness, and transportation. Progress is tracked through a competency checklist as inmates complete identified tasks in an effort to reach identifiable goals prior to release and upon return to the community.

Pre-Release Curriculum Modules

Wellness Module 1

Identify healthy lifestyle and leisure activities: basic first aid and sexual education.

Education Module 2

Assess need for GED/HSED and/or feasibility of attaining higher education through tech school or university including exploration of financial aid options.

Employment Module 3

Evaluate transferable employment and self-management skills to assist in understanding and enhancing employment capabilities. Research career options and assist in career development. Identify barriers to employment and strategies or techniques to overcome them.

Family Support Module 4

Develop effective communication skills. Recognize importance of parent/child relationship. Understand dynamics of family support system. Address child support and/or other family court issues.

Financial Literacy Module 5

FDIC Money Smart – Instructor Led Curriculum address such areas as borrowing basics, credit, checking and savings accounts, budgeting, home ownership, insurance and taxes.

Health Module 6

Understand ways of maintaining mental and physical health. Determine health care needs and support services to address them. Determine eligibility for SSI/SSDI and other resources for the uninsured.

Housing Module 7

Identify housing options including residential, treatment, emergency, transitional, and long-term.

Personal Development Module 8

Includes goal setting, conflict resolution, stress management, coping skills and character development.

Transportation Module 9

Identify various modes such as carpool, cab, bus, bike, etc. Reinstate or secure drivers license and/or State ID.

Transitional Prep Module 10

Develop personalized portfolio. Community Reintegration Planning with social worker and assigned field agent plus any previously identified community support network.

Library Services

Each DOC institution has a library whose services include a general collection, interlibrary loan services, and a legal collection.

General Collection

The general collections include fiction and non-fiction books, reference materials, newspapers, magazines, and audio-visual materials. Some Spanish language and large print materials are available.

Interlibrary Loan System

Inmates may use the interlibrary loan system to obtain materials that are not part of the institution's library. Interlibrary loan requests are screened to determine if the materials are in compliance with the institution's policies.

Legal Collection

Each library provides a legal collection in accordance with Administrative Code DOC 309.27. Included in the legal collection are state and federal reports and United States Code annotated.

Library staff will assist inmates unfamiliar with legal materials. Inmate law library clerks also provide assistance in some institutions. Services are extended to inmates in restricted status. Photocopy and notary services are provided by the library or other staff within each institution.

Religious Programs

Each institution has a Chaplain who coordinates and conducts religious activities to meet the spiritual needs of a diverse and multi-cultural population. Types of services and faiths represented vary between institutions due to the make-up of the population and resources available.

Types of services provided include worship services, personal spiritual counseling, religious studies and acting as a liaison with community faith organizations. To provide some of these services, the chaplain coordinates services conducted by approved volunteers from the community. Many chapels also loan books and audio cassettes for inmate use.

WISCONSIN CORRECTIONAL INSTITUTIONS

Chippewa Valley Correctional Treatment Facility (CVCTF)

Chippewa Falls, Wisconsin

Primary Treatment Programs

- Relapse AODA

- Residential AODA

Rehabilitation Programs

- Earned Release Program (ERP)

Sex Offender Treatment Programs

Services

- Work Release

Community Service Projects

- Food Drive

- Farm Progress Days

- Make a Difference Day

- Chippewa Falls / Eau Claire Humane Society Projects

- Spring Clean-Up

- Chippewa Falls High School / Holy Ghost Elementary Building Washing

- Home Improvement Projects

- Jim Falls Sturgeon Fest

- Chippewa Falls Public Library Projects

- Village of Boyd Projects

- St. Joseph's Hospital Projects

- Rusk County Wildlife Restoration Projects

- Lake Wissota State Park Projects

- Stanley Veteran's Park Projects

- Irvine Park (Chippewa Falls) Projects

- Chippewa County Historical Society Projects

Columbia Correctional Institution (CCI)

Portage, Wisconsin

Primary Treatment

- Anger Management

- Domestic Violence

- CGIP Phase 1

- CGIP Phase 2

- CGIP Phase 4

Rehabilitation Programs

Sex Offender Treatment Programs

Services

- Adult Basic Education (ABE) / HSED

- Special Education (SPED)

- College of the Air (CLN)

- Special Management Unit (SMU)

- Spanish Class / Interpreters / Tutors (ABE)
- Building, Maintenance and Construction
- Custodial Service
- Printing
- Community Service Projects
 - Garden Project
 - Crochet Project
 - Jacket Project
 - Teddy Bear Project
 - Eye Glass Project
 - Woodworking Project

Dodge Correctional Institution (DCI)

Waupun, Wisconsin

- Primary Treatment Programs
- Rehabilitation Programs
- Sex Offender Treatment Programs
- Services
- Community Service Projects
 - Craft Projects (Knitting)
 - Craft Project (Drawings)

Fox Lake Correctional Institution (FLCI)

Fox Lake, Wisconsin

- Primary Treatment Programs
 - Residential AODA
 - Domestic Violence
 - CGIP Phase 1
 - CGIP Phase 2
- Rehabilitation Programs
- Sex Offender Treatment Programs
 - Sex Offender Treatment (SO-2)
- Services
 - Adult Basic Education (ABE) / HSED (**Medium and Minimum Facilities**)
 - College of the Air (CLN)
 - Parenting
 - Spanish Classes / Interpreters / Tutors (ABE)
 - Work Release (**Minimum Facility Only**)
 - Auto Repair and Refinishing
 - Auto Maintenance
 - Cabinet Making
 - Custodial Service
 - Horticulture
 - Computer Assisted Drafting
 - Machine Tool Operations
 - Small Engine Repair

- Masonry
- Office Software Applications
- Welding
- Community Service Projects
 - Craft Projects
 - Donations Projects
 - Woodworking Project

Green Bay Correctional Center (GBCI)

Green Bay, Wisconsin

- Primary Treatment Programs
 - Anger Management
 - CGIP Phase 1
 - CGIP Phase 2
- Rehabilitation Programs
- Sex Offender Treatment Programs
- Services
 - Adult Basic Education (ABE) / HSED
 - Special Education (SPED)
 - College of the Air (CLN)
 - Parenting
 - Spanish Classes / Interpreters / Tutors (ABE)
 - Barbering/Cosmetology
 - Cabinet Making
 - Masonry
 - Office Assistant/Aide
 - Painting and Refinishing
- Community Service Projects
 - Craft Project
 - Fresh Produce Project

Jackson Correctional Institution (JCI)

Black River Falls, Wisconsin

- Primary Treatment Programs
 - Residential AODA
 - Anger Management
 - Domestic Violence
 - CGIP Phase 1
 - CGIP Phase 2
- Rehabilitation Programs
- Sex Offender Treatment Programs
 - Sex Offender Treatment (SO-2)
- Services
 - Adult Basic Education (ABE) / HSED
 - College of the Air (CLN)
 - Parenting

Food Service / Culinary Arts
Microcomputer Specialist
Community Service Projects
Craft Projects
Inmate Labor Project
Produce Project
Rosary Project
Pop Tabs Project
JCI Reality Project

Kettle Moraine Correctional Institution (KMCI)

Plymouth, Wisconsin

Primary Treatment Programs

Residential AODA
Anger Management
Domestic Violence
CGIP Phase 1
CGIP Phase 2

Rehabilitation Programs

Sex Offender Treatment Programs

Sex Offender Treatment (SO-2)

Services

Adult Basic Education (ABE) / HSED
Special Education (SPED)
College of the Air (CLN)
Parenting
Cabinet Making
Custodial Service
Masonry
Office Software Applications
Welding

Community Service Projects

Restorative Justice Craft Project
Locks of Love Project
Victim Witness Awareness Week Canteen Contributions
Hurricane Relief Contributions Project
Submarine Sandwich Sales Project for Restorative Justice Fund
Garden Produce Project
Woodworking Projects
Welding Class Project

Milwaukee Secure Detention Facility (MSDF)

Milwaukee, Wisconsin

Primary Treatment Programs

ATR / AODA

Rehabilitation Programs
 Earned Release Program (ERP)
Sex Offender Treatment Programs
Services
Community Service Projects
 Book Drive
 Art Project / Auction

New Lisbon Correctional Institution (NLCI)

New Lisbon, Wisconsin

Primary Treatment Programs
 Anger Management
 Domestic Violence
 CGIP Phase 1
 CGIP Phase 2
Rehabilitation Programs
Sex Offender Treatment Programs
 Sex Offender Treatment (SO-2)
Services
 Adult Basic Education (ABE) / HSED
 College of the Air (CLN)
 Parenting
 Spanish Classes / Interpreters / Tutors (ABE)
 Commercial Bakery
 Computer Applications Specialist
 Horticulture
Community Service Projects
 Craft Projects

Oakhill Correctional Institution (OCI)

Oregon, Wisconsin

Primary Treatment Programs
 Residential AODA
Rehabilitation Programs
 Non-AODA Earned Release Program (ERP)
Sex Offender Treatment Programs
Services
 Adult Basic Education (ABE) / HSED
 College of the Air (CLN)
 Work Release
 Horticulture
 Office Software Applications
Community Service Projects
 Education Projects
 Clean-Up / Set-Up Projects

Miscellaneous Projects

Oshkosh Correctional Institution (OSCI)

Oshkosh, Wisconsin

Primary Treatment Programs

- Residential AODA
- Dual Diagnosis AODA
- Anger Management
- Domestic Violence
- CGIP Phase 1
- CGIP Phase 2

Rehabilitation Programs

Sex Offender Treatment Programs

- Sex Offender Treatment (SO-2)
- Sex Offender Treatment (SOTP) (SO-4)

Services

- Adult Basic Education (ABE) / HSED
- College of the Air (CLN)
- Spanish Classes / Interpreters / Tutors (ABE)
- Braille Transcription
- Building, Maintenance, and Construction
- Data Entry
- Food Service/Culinary Arts
- Institution Food Production
- Horticulture
- Multi-Operational Aide
- Office Software Applications

Community Service Projects

- Craft / Knitting Projects
- Miscellaneous Projects

Prairie du Chien Correctional Institution (PDCI)

Prairie du Chien, Wisconsin

Primary Treatment Programs

- Residential AODA
- CGIP Phase 1
- CGIP Phase 2
- CGIP Phase 4

Rehabilitation Programs

Sex Offender Treatment Programs

Services

- Adult Basic Education (ABE) / HSED
- Special Education (SPED)
- College of the Air (CLN)
- Parenting
- Spanish Classes / Interpreters / Tutors (ABE)

- Building, Maintenance, and Construction
- Masonry
- Office Assistant/Aide
- Community Service Projects
- Miscellaneous Projects
- Craft Projects

Racine Correctional Institution (RCI)

Racine, Wisconsin

- Primary Treatment Programs
 - Anger Management
 - Domestic Violence
 - CGIP Phase 1
 - CGIP Phase 2
 - CGIP Phase 4
- Rehabilitation Programs
 - Earned Release Program (ERP)
- Sex Offender Treatment Programs
 - Sex Offender Treatment (SO-2)
 - Sex Offender Treatment (SOTP) (SO-4)
- Services
 - Adult Basic Education (ABE) / HSED
 - College of the Air (CLN)
 - Parenting
 - Spanish Classes / Interpreters / Tutors (ABE)
 - Food Service / Culinary Arts
 - Business Applications
- Community Service Projects
 - Craft Projects
 - Inmate Hobby Project
 - Inmate Veterans Group Projects
 - Religious Programs

Racine Youthful Offender Correctional Facility (RYOCF)

Racine, Wisconsin

- Primary Treatment Programs
 - Residential AODA
 - Anger Management
 - Domestic Violence
 - CGIP Phase 1
 - CGIP Phase 2
- Rehabilitation Programs
- Sex Offender Treatment Programs
 - Sex Offender Treatment (SO-2)

Services

- Adult Basic Education (ABE) / HSED
- Special Education (SPED)
- College of the Air (CLN)
- Parenting
- C-Tech (Cable Laying)
- Microcomputer Specialist
- Office Software Applications

Community Service Projects

- Craft Projects
- Produce Project
- Art Class Project

Redgranite Correctional Institution (RCI)

Redgranite, Wisconsin

Primary Treatment Programs

- Anger Management
- Domestic Violence
- CGIP Phase 1
- CGIP Phase 2

Rehabilitation Programs

Sex Offender Treatment Programs

- Sex Offender Treatment (SO-2)

Services

- Adult Basic Education (ABE) / HSED
- College of the Air (CLN)
- Office Software Applications

Community Service Projects

- Crochet / Sewing Projects
- Craft Projects
- Produce Project
- Inmate Labor Projects

St. Croix Correctional Center (SCCC) (Male)

New Richmond, Wisconsin

Primary Treatment Programs

- Residential AODA

Rehabilitation Programs

- Challenge Incarceration Program (CIP)
- Non-AODA Challenge Incarceration Program (CIP)

Sex Offender Treatment Program

Services

- Adult Basic Education (ABE)
- College of the Air (CLN)

Community Service Projects

Stanley Correctional Institution (SCI)

Stanley, Wisconsin

Primary Treatment Programs

- Anger Management
- Domestic Violence
- CGIP Phase 1
- CGIP Phase 2

Rehabilitation Programs

Sex Offender Treatment Programs

Services

- Adult Basic Education (ABE) / HSED
- College of the Air (CLN)
- Parenting
- Spanish Classes / Interpreters / Tutors (ABE)
- Custodial Service

Community Service Projects

- SCOPE Project
- Inmate Run/Walk Project
- Garden Project

Sturtevant Transitional Facility (STF)

Sturtevant, Wisconsin

Primary Treatment Programs

- ATR / AODA

Rehabilitation Programs

Sex Offender Treatment Programs

Services

- Work Release

Community Service Projects

Waupun Correctional Institution (WCI)

Waupun, Wisconsin

Primary Treatment Programs

- Anger Management
- Domestic Violence
- CGIP Phase 1
- CGIP Phase 2
- CGIP Phase 4

Rehabilitation Programs

Sex Offender Programs

Services

- Adult Basic Education (ABE) / HSED

College of the Air (CLN)
Parenting
Building, Maintenance, and Construction
Welding
Community Service Projects
Craft Project
Bake Sale and Raffle
Toy Project

Wisconsin Resource Center (WRC)

Winnebago, Wisconsin

Primary Treatment Programs
Rehabilitation Programs
Sex Offender Treatment Programs
Services
 Adult Basic Education (ABE) / HSED
Community Service Projects
 Craft Projects
 Miscellaneous Projects

Wisconsin Secure Program Facility (WSPF)

Boscobel, Wisconsin

Primary Treatment Programs
 Domestic Violence
 CGIP Phase 1
 CGIP Phase 2
Rehabilitation Programs
Sex Offender Treatment Programs
Services
 Adult Basic Education (ABE) / HSED
 Special Education (SPED)
 College of the Air (CLN)
Community Service Projects
 Craft Projects
 Sign Projects

WISCONSIN CORRECTIONAL CENTER SYSTEM

Black River Falls Correctional Center (BRCC)

Black River Falls, Wisconsin

Primary Treatment Programs

Residential AODA

Rehabilitation Programs

Challenge Incarceration Program (CIP)

Sex Offender Treatment Programs

Services

Adult Basic Education (ABE) / HSED

College of the Air (CLN)

Community Service Projects

Inmate Labor Projects

Fundraisers

Drug Abuse Correctional Center (DACC)

Winnebago, Wisconsin

Primary Treatment Programs

Rehabilitation Programs

Earned Release Program (ERP)

Sex Offender Treatment Programs

Services

Community Service Projects

Inmate Labor Projects

Felmers O. Chaney Correctional Center (FCCC)

Milwaukee, Wisconsin

Primary Treatment Programs

Rehabilitation Programs

Sex Offender Treatment Programs

Services

Work Release

Community Service Projects

Inmate Labor Projects

Flambeau Correctional Center (FCC)

Hawkins, Wisconsin

Primary Treatment Programs

Residential AODA

CGIP Phase 1

CGIP Phase 2

Rehabilitation Programs
Sex Offender Treatment Programs
Services
 Adult Basic Education (ABE) / HSED
 College of the Air (CLN)
Community Service Projects
 Inmate Labor Projects
 Woodshop Donation Project

Gordon Correctional Center (GCC)

Gordon, Wisconsin

Primary Treatment Programs
 CGIP Phase 1
 CGIP Phase 2
Rehabilitation Programs
Sex Offender Treatment Programs
Services
 Adult Basic Education (ABE) / HSED
 College of the Air (CLN)
 Work Release
Community Service Projects
 Inmate Labor Projects

Kenosha Correctional Center (KCC)

Kenosha, Wisconsin

Primary Treatment Programs
Rehabilitation Programs
Sex Offender Treatment Programs
Services
 Work Release
Community Service Projects
 Inmate Labor Projects

Marshall Sherrer Correctional Center (MSCC)

Milwaukee, Wisconsin

Primary Treatment Programs
Rehabilitation Programs
Sex Offender Treatment Programs
Services
 Work Release
Community Service Projects
 Inmate Labor Projects

McNaughton Correctional Center (MCC)

Lake Tomahawk, Wisconsin

Primary Treatment Programs

Rehabilitation Programs

Sex Offender Treatment Programs

Services

Adult Basic Education (ABE) / HSED

Work Release

Community Service Projects

Inmate Labor Projects

Inmate Public Speaking Project

Oregon Correctional Center (OCC)

Oregon, Wisconsin

Primary Treatment Programs

Rehabilitation Programs

Sex Offender Treatment Programs

Services

Adult Basic Education (ABE) / HSED

Work Release

Community Service Projects

Inmate Labor Projects

St. Croix Correctional Center (SCCC) (Male)

New Richmond, Wisconsin

Primary Treatment Programs

Residential AODA

Rehabilitation Programs

Challenge Incarceration Program (CIP)

Non-AODA Challenge Incarceration Program (CIP)

Sex Offender Treatment Programs

Services

Adult Basic Education (ABE) / HSED

College of the Air (CLN)

Community Service Projects

Inmate Labor Projects

Sanger Powers Correctional Center (SPCC)

Oneida, Wisconsin

Primary Treatment Programs

Rehabilitation Programs

Sex Offender Treatment Programs

Services

Work Release

Community Service Projects

Inmate Labor Projects

Thompson Correctional Center (TCC)

Deerfield, Wisconsin

Primary Treatment Programs

Rehabilitation Programs

Sex Offender Treatment Programs

Services

Adult Basic Education (ABE) / HSED

Work Release

Community Service Projects

Inmate Labor Projects

Winnebago Correctional Center (WCC)

Winnebago, Wisconsin

Primary Treatment Programs

Rehabilitation Programs

Sex Offender Treatment Programs

Services

Work Release

Community Service Projects

Inmate Labor Project

WISCONSIN WOMENS CORRECTIONAL CENTER SYSTEM

John C. Burke Correctional Center (JBCC)

Waupun, Wisconsin

Primary Treatment Programs

Rehabilitation Programs

CGIP Phase 1

CGIP Phase 2

Sex Offender Treatment Programs

Services

Adult Basic Education (ABE) / HSED

Parenting

Work Release

Community Service Projects

Inmate Craft Projects

Inmate Labor Projects

Milwaukee Women's Correctional Center (MWCC)

Milwaukee, Wisconsin

Primary Treatment Programs

Residential AODA

Outpatient AODA

ATR / AODA

CGIP Phase 1

Rehabilitation Programs

Sex Offender Treatment Programs

Services

Work Release

Community Service Projects

Inmate Craft Projects

Robert E. Ellsworth Correctional Center (REECC)

Union Grove, Wisconsin

Primary Treatment Programs

Residential AODA

Anger Management

CGIP Phase 1

CGIP Phase 2

Rehabilitation Programs

Earned Release Program (ERP)

Non-AODA Earned Release Program (ERP)

Sex Offender Treatment Program

Services

- Adult Basic Education (ABE) / HSED
- Special Education (SPED)
- College of the Air (CLN)
- Parenting
- Work Release
- Office Software Applications
- Community Service Projects
 - Inmate Craft Projects
 - Inmate Labor Projects

St. Croix Correctional Center (SCCC) (Female)

New Richmond, Wisconsin

- Primary Treatment Programs
 - Relapse AODA
 - Residential AODA

- Rehabilitation Programs
 - Earned Release Program (ERP)
 - Non-AODA Challenge Incarceration Program (CIP)
- Sex Offender Treatment Program
- Services
 - Adult Basic Education (ABE) / HSED
- Community Service Projects

Taycheedah Correctional Institution (TCI)

Fond du Lac, Wisconsin

- Primary Treatment Programs
 - Residential AODA
 - Dual Diagnosis AODA
 - Anger Management
 - Violence In Relationships
 - Childhood Abuse
 - CGIP Phase 1
 - CGIP Phase 2
- Rehabilitation Programs
 - Earned Release Program (ERP)A
- Sex Offender Treatment Program
 - Sex Offender Treatment (SO-2)
- Services
 - Adult Basic Education (ABE) / HSED
 - Special Education (SPED)
 - College of the Air (CLN)
 - Special Management Unit (SMU)
 - Parenting
 - Building, Maintenance, and Construction

Office Software Applications
Dental Lab Tech
A+ Certification / Computer Hardware Recycling
Community Service Projects
Inmate Craft Projects